



KENTUCKY CABINET FOR HEALTH AND FAMILY SERVICES

Stop, Collaborate & Listen: How Kentucky's
Leaders are Working with Kentuckians to
Meet Their Full Human Potential

Greetings


- Victoria Elridge, Commissioner
 - Department for Aging and Independent Living
- Lisa Lee, Commissioner
 - Department for Medicaid Services
- Marta Miranda-Straub, Commissioner
 - Department for Community Based Services
- Wendy Morris, Commissioner
 - Department for Behavioral Health, Developmental and Intellectual Services

When someone says "STOP"
I never know if its In the
Name of Love,
Hammer Time, or if I am
supposed to collaberate
and listen



somee cards
user card

Interaction is a Must

- Our brains retain more information when we are able to interact with one another
- “Ice Ice Baby” song as a cue to interact in the chat
- Interaction Cue: 



What do you think of when you hear Kentucky?

- Horses
- Derby
- Basketball
- Muhammed Ali
- Appalachian Mountains
- Bourbon
- Mammoth Cave
- Bluegrass Music

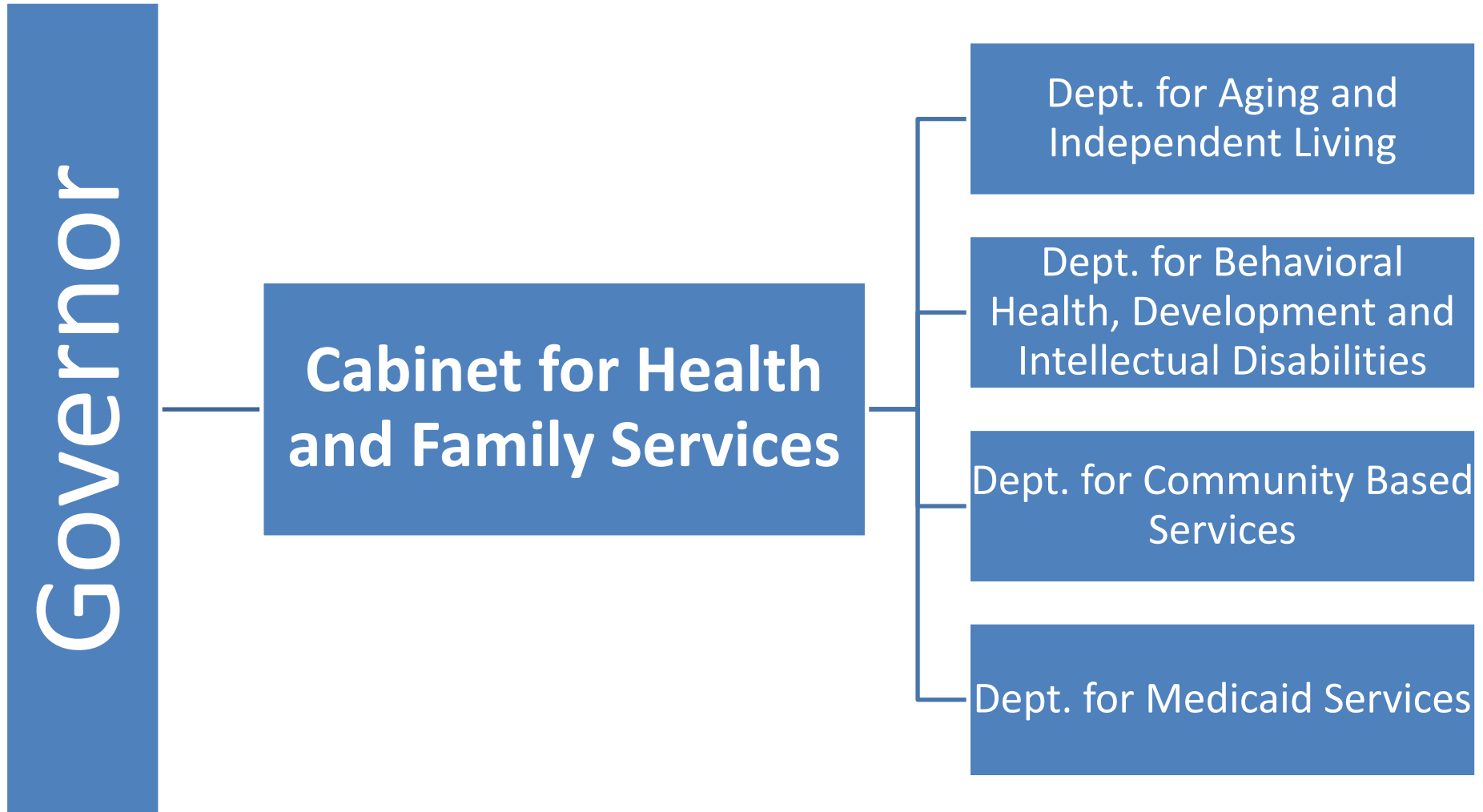


Kentucky is.....

- Birthplace of Bourbon and Corvettes
- Horse Capitol of the World
- Known for raising celebrities, musicians, and athletes
- One of the few places to see a Moonbow
- Home of Bourbon balls
- Birthplace of Racial Reckoning
- One of the first states to implement ACA

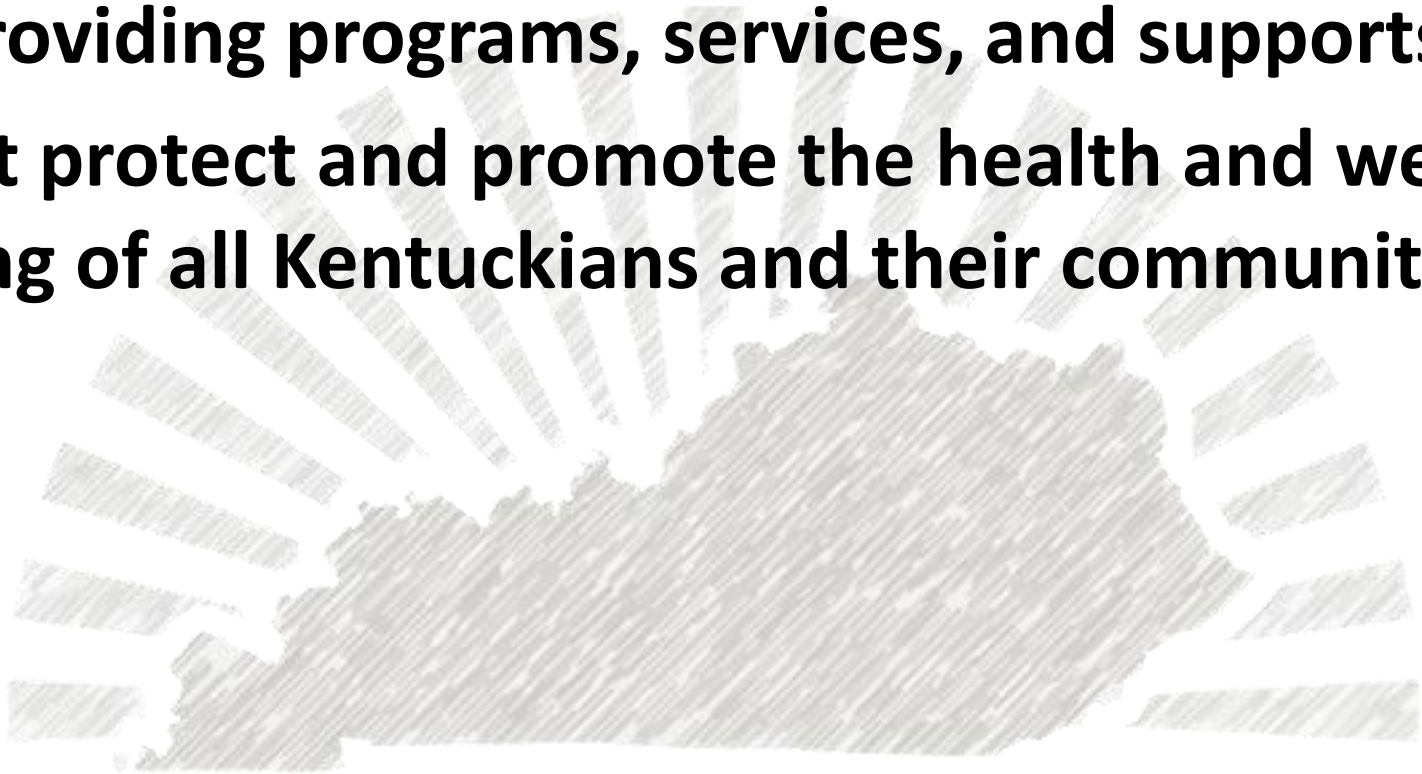


Kentucky's Overview



CHFS Mission

To be a diverse and inclusive organization providing programs, services, and supports that protect and promote the health and well-being of all Kentuckians and their communities



CHFS Pillars



Department for Aging and Independent Living

- State Unit on Aging- Older Americans Act Services
- State Guardianship
- Physical Disability and Caregiving State General Funded Programs
- Assisted Living
- Aging and Physical Disability Medicaid Waiver and Participant Directed Services for all waivers
- Office of Dementia Services
- PACE standards and monitoring

Department for Behavioral Health, Developmental, and Intellectual Disabilities

- Mental health & substance use services
- Developmental and intellectual disabilities services
- Acute and residential facilities
 - Psychiatric Hospitals and Nursing Homes
 - Intermediate Care Facilities and Specialty Clinics
- Community Mental Health Centers

Department for Community Based Services

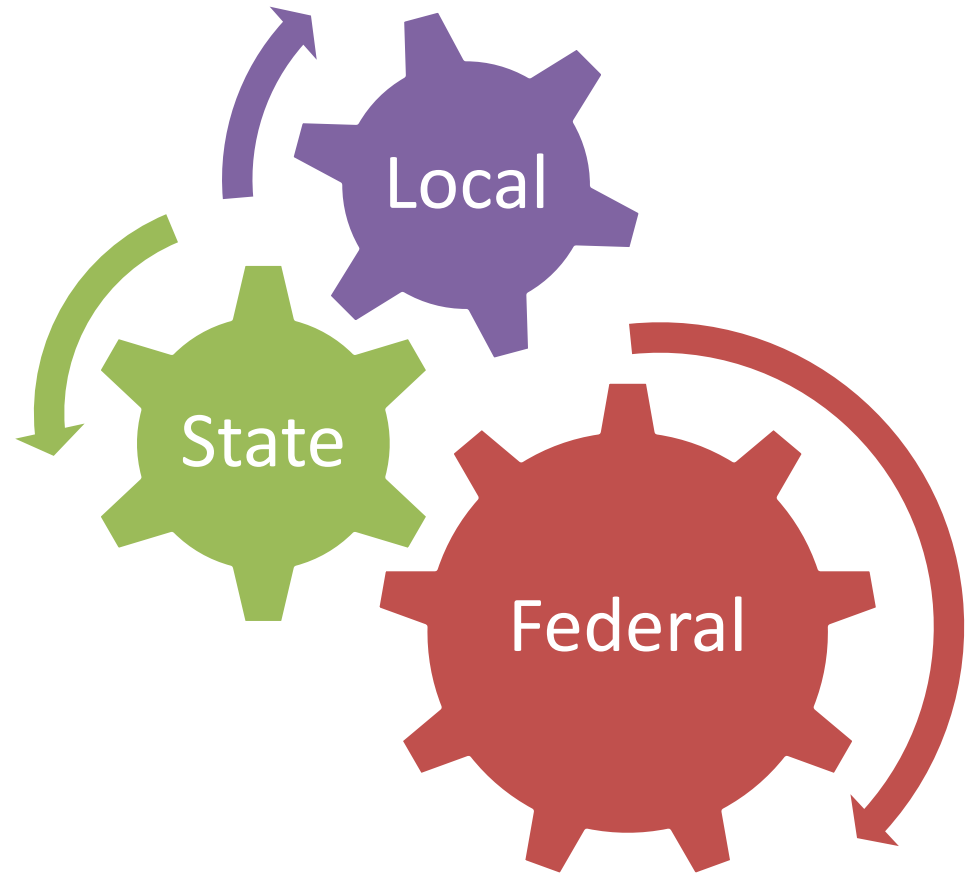
- Child/Adult Protective Services
- Childcare Programming
- Foster Care and Adoption
- Benefits
 - SNAP
 - KTAP
- Medicaid Certification
- Prevention

Department for Medicaid Services

- State plan insurance for 1.6 M Kentuckians
- Medicaid Expansion
- MCO Oversight
- Kynect Benefits
- Kynect Resources
- Children's Health Insurance
- 6 Home and Community Based Waivers
- PACE

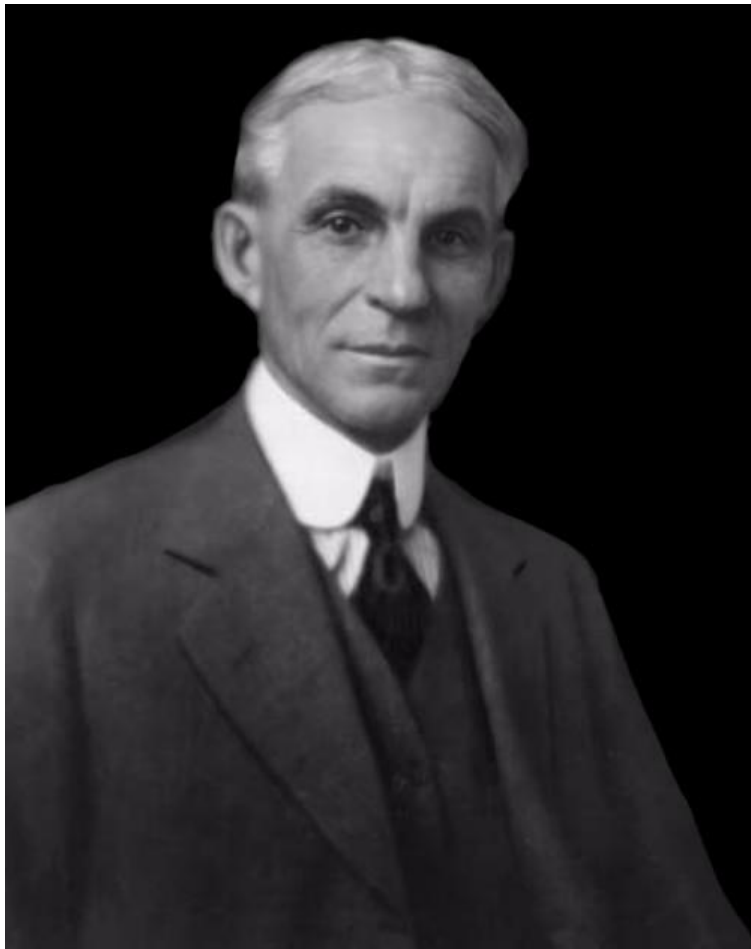
Interaction Time

- What role do you serve in your agency?



Collaborate





Coming together is a **beginning**,
staying together is **progress**,
and working together is **success**.

- Henry Ford

Goalcast

Lifespan of Full Human Potential



Collaborative Process

Leadership
Support

Monthly
Meetings

At the Table
Together

Communicate,
Communicate,
Communicate

Transparency

Radical Self-
Care

Vulnerability

Recognize
Intersectionality

Collaborative Process - Equity

- Executive Advisor Hired in Behavioral Health
 - Provided topical education and technical assistance
 - Identified champions for each division
 - Developed division level teams
 - Teams developed SMART goals
 - DBH: Clinical training for CMHCs on racial trauma
 - AFM: Increase number of registered minority vendors
 - Regular report to commissioner

Equality vs Equity



Social Justice



Collaborative Process - Equity

- Cabinet spread
 - Assisted other departments to follow suit
- Cabinet Community of Practice
 - Representatives from each departmental team
 - Cross-cabinet collaboration
 - Regular report to cabinet secretary
- External Community of Practice
 - Expanded beyond cabinet
 - Regional opportunities with state hospitals and community mental health centers

Collaborative Process- Trauma and Resilience

- Cabinet wide trauma and resiliency core leadership team
- Organizational/Departmental resilience roundtable leaders
- Fostering resilience supervisor training
- Marriage of Compassion to Resilience Workshops

Collaborative Process- Trauma and Resilience

- Organizational and Team Resilience
- Characteristic of Resilient Organizations
- Policy and Practice
- Beyond Individual Responsibility
- TIC Language
- Debriefing Groups
- Caring Circles
- A Community of Practice

Collaborative Process- Trauma and Resilience

- The Continuum: Chronic Stress, Burnout, Compassion Fatigue, Vicarious Trauma, Secondary Stress/Trauma, Impairment
- Accessibility-Empowerment-Authenticity-Vulnerability
- Trusted Advisors: Staff/Clients/Partners
- Decreasing Barriers-Increasing Access

Interaction Time

What does your agency do to support a collaborative process?



Listen



Case Collaboration Scenario

- Vaccine Equity
 - DAILE: Aging and Vulnerable Population
 - DCBS: Maternal Outreach
 - DBHDID: Vulnerable Populations and Mental Health
 - DMS: MCO Partnership



Case Collaboration Scenario

- Mobile Crisis Collaboration
 - DAIL: Aging and State Guardianship
 - DBHDID: Mental Health
 - DMS: Payor
 - DCBS: First on Scene



Case Collaboration Scenario

- [Mark's Story](#)

One day, last September, a 31-year-old man, delirious, in possession of nothing other than a teddy bear, had been found on the roads of Ohio County, searching for food and water.

TEAM
KENTUCKY

Case Collaboration Scenario

- Mark's Story
 - DCBS: APS contact
 - DAIL: State Guardianship Individual
 - DBHDID: Lifeskills Crisis Stabilization Unit and Western State Psychiatric Hospital
 - DMS: Payor for Services





Thank You



For ALL You Do!