

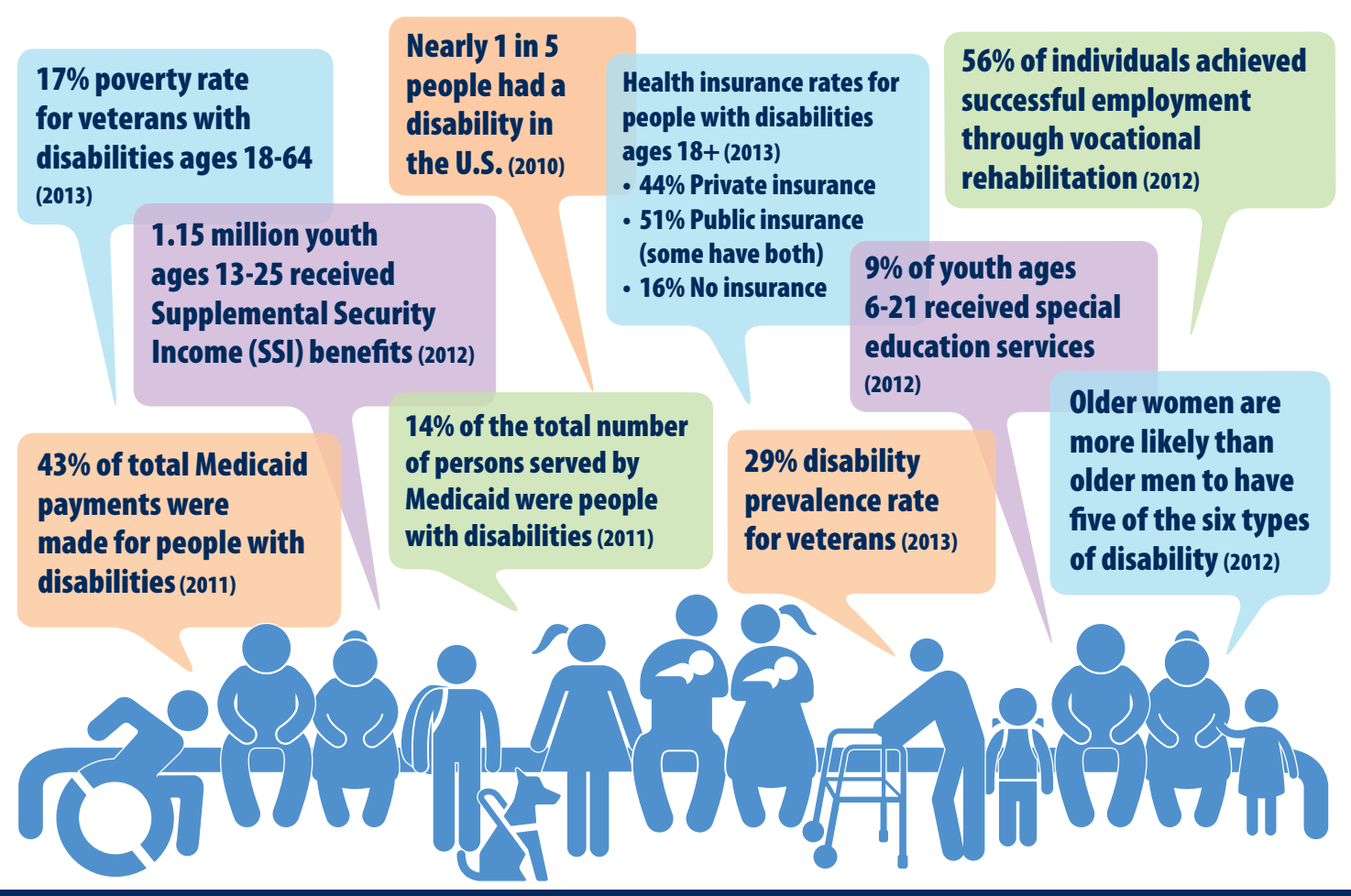


National Association of States  
United for Aging and Disabilities  
1201 15th Street NW, Suite 350  
Washington, DC 20005  
Phone: 202-898-2578  
www.nasuad.org  
www.hcbs.org

Stay informed with us on:  



## PROFILE OF AMERICANS WITH DISABILITIES



© 2015 www.NASUAD.org

### SOURCES:

- CHILDREN**
  - 36th Annual Report to Congress on the Implementation of the Individuals with Disabilities Education Act, 2014, Office of Special Education Rehabilitative Services, U.S. Dept. of Education, Dec 2014, data from 2012.
  - U.S. Census Bureau, 2013 American Community Survey (ACS), 1-year estimates, American Fact Finder, Table S1810.
  - Murphey, David, Mae Cooper and Kristin A. Moore, *Children with Disabilities: State-Level Data from the American Community Survey*, Child Trends Research Brief, Oct 2012.
- TRANSITION AGE YOUTH**
  - 2014 Annual Disability Statistics Compendium and Annual Disability Statistics Compendium: 2009, Institute on Disability at the University of New Hampshire, data from Office of Special Education Programs, Data Accountability Center.
  - *The Post-High School Outcomes of Young Adults With Disabilities up to 6 Years After High School: Key Findings From the National Longitudinal Transition Study-2*, Institute of Education Sciences, Sept 2011, data from U.S. Dept of Education, National Center for Special Education Research, National Longitudinal Transition Study-2, Wave 4 parent interview and youth interview/survey, 2007.
  - *The 2020 Federal Youth Transition Plan: A Federal Interagency Strategy*, Federal Partners in Transition Workgroup, Feb 2015, data from Bureau of Labor Statistics, Labor Force Statistics from Current Population Survey, 2014.
- WORKING AGE ADULTS**
  - 2014 Disability Compendium, data from U.S. Census Bureau, 2013 ACS, American FactFinder, Table B18120, Table B18140, and Table B18130.
- OLDER ADULTS**
  - He, Wan and Luke J. Larsen, *Older Americans with a Disability: 2008-2012*, U.S. Census Bureau, Dec 2014, data from American Community Survey, 5-year estimates, 2008-2012.
  - Ziliak, James P. and Craig Gunderson, *The State of Senior Hunger in America 2013: An Annual Report*, National Foundation to End Senior Hunger and NASUAD, Apr 2015.
- BACK PANEL**
  - *The 2020 Federal Youth Transition Plan*, data from Social Security Administration, 2012.
  - Brault, Matthew W., *Americans with Disabilities: 2010*, July 2012, U.S. Department of Commerce, data from the Survey of Income and Program Participation, U.S. Census Bureau.
  - 36th Annual Report to Congress on Individuals with Disabilities Education Act, 2014.
  - He, Wan and Luke J. Larsen, *Older Americans with a Disability: 2008-2012*.
  - 2014 Disability Compendium, data from U.S. Census Bureau, 2013 ACS, Table B21007 and Table B18135; data only includes individuals living in the community.
  - 2014 Disability Compendium, data from Rehabilitation Services Administration, Management Information System, Ad Hoc Query of the ARR Cumulative Caseload Report; data from FFY2012 and taken from closed cases.
  - 2014 Disability Compendium, data from U.S. Department of Health and Human Services, 2013 Medicare and Medicaid Statistical Supplement, Centers for Medicare & Medicaid Services, Table 13.23 and Table 13.22; data from FFY2011.

# DISABILITY IN AMERICA

## Experiences Across the Lifespan



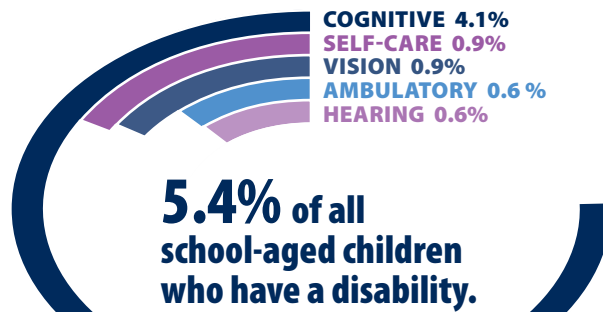
## CHILDREN

BIRTH TO 21 WITH DISABILITIES

### Early Intervention Birth to Age 2

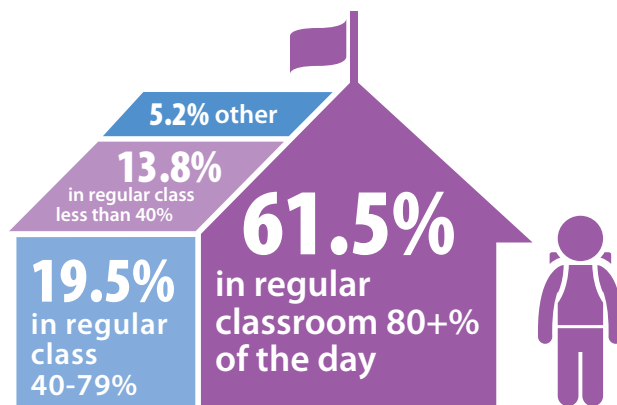
**94.9%** of eligible infants and toddlers receive services in home/community setting.

### Disabilities by Type Ages 5-17



### Learning Environment Ages 6-21

% of School Day Spent in an Integrated Class



### Poverty Rate Birth to Age 17

**1 in 3** children with a disability live in poverty.

© 2015 www.NASUAD.org

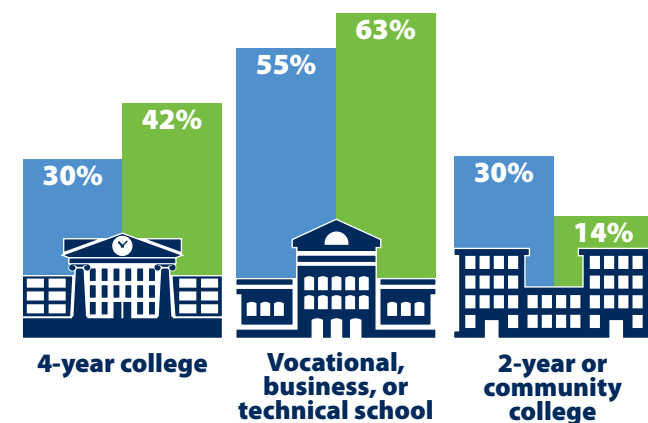
## TRANSITION AGE YOUTH

### Special Education Students Exiting High School Ages 14-21



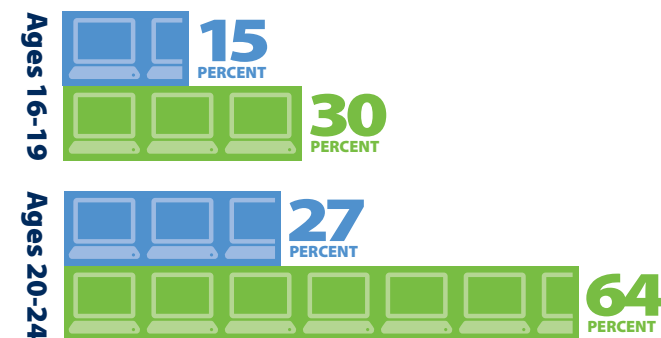
### Postsecondary Education Graduated or Completed Program

WITH DISABILITIES AND WITHOUT DISABILITIES



### Youth Employment Ages 16-24

WITH DISABILITIES AND WITHOUT DISABILITIES

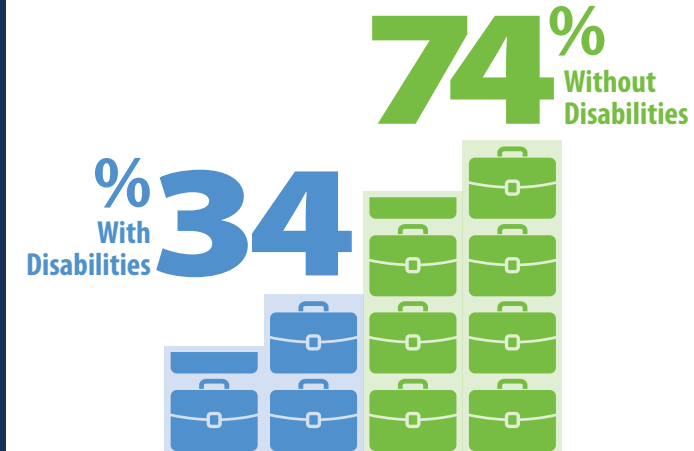


© 2015 www.NASUAD.org

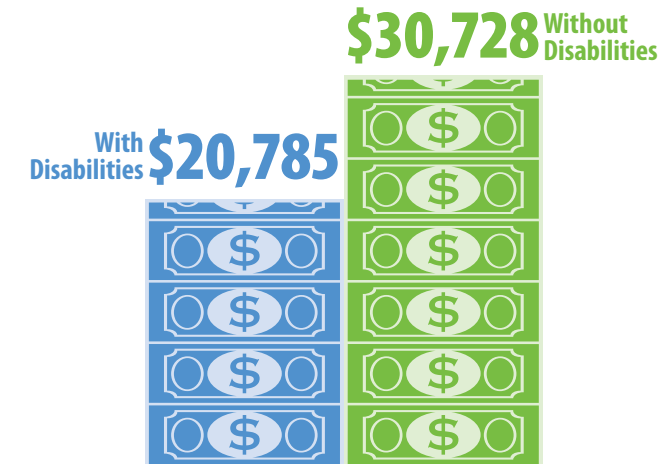
## WORKING AGE ADULTS

WITH DISABILITIES AND WITHOUT DISABILITIES

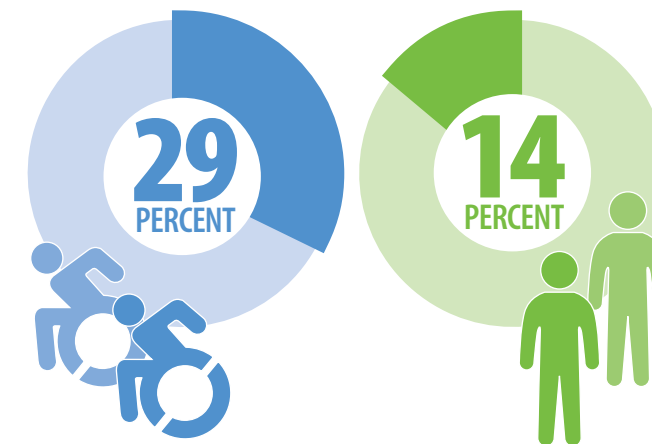
### Employment Rate Ages 18-64



### Median Earnings Ages 16+



### Poverty Rate Ages 18-64

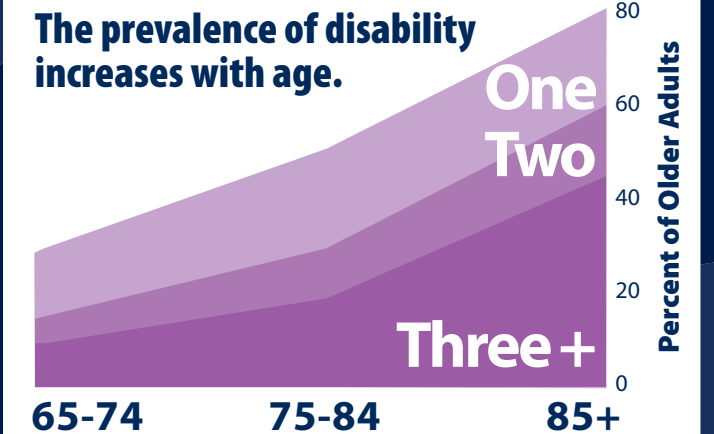


© 2015 www.NASUAD.org

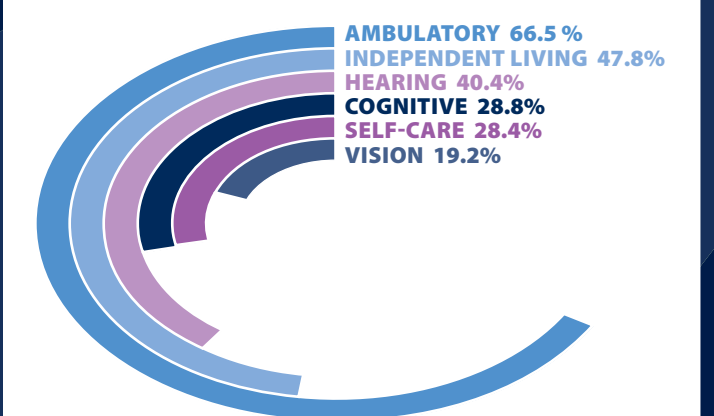
## OLDER ADULTS

65 AND UP WITH DISABILITIES

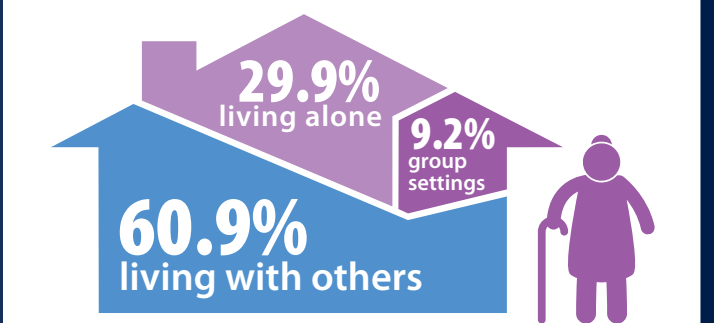
### Number of Disabilities by Age



### Disabilities by Type Age 65+



### Living Arrangements Age 65+



**40%** of all seniors with disabilities suffer from hunger.

© 2015 www.NASUAD.org