



DISABILITIES IN AMERICA

Experiences Across the Lifespan

Copy here if needed

EARLY INTERVENTION

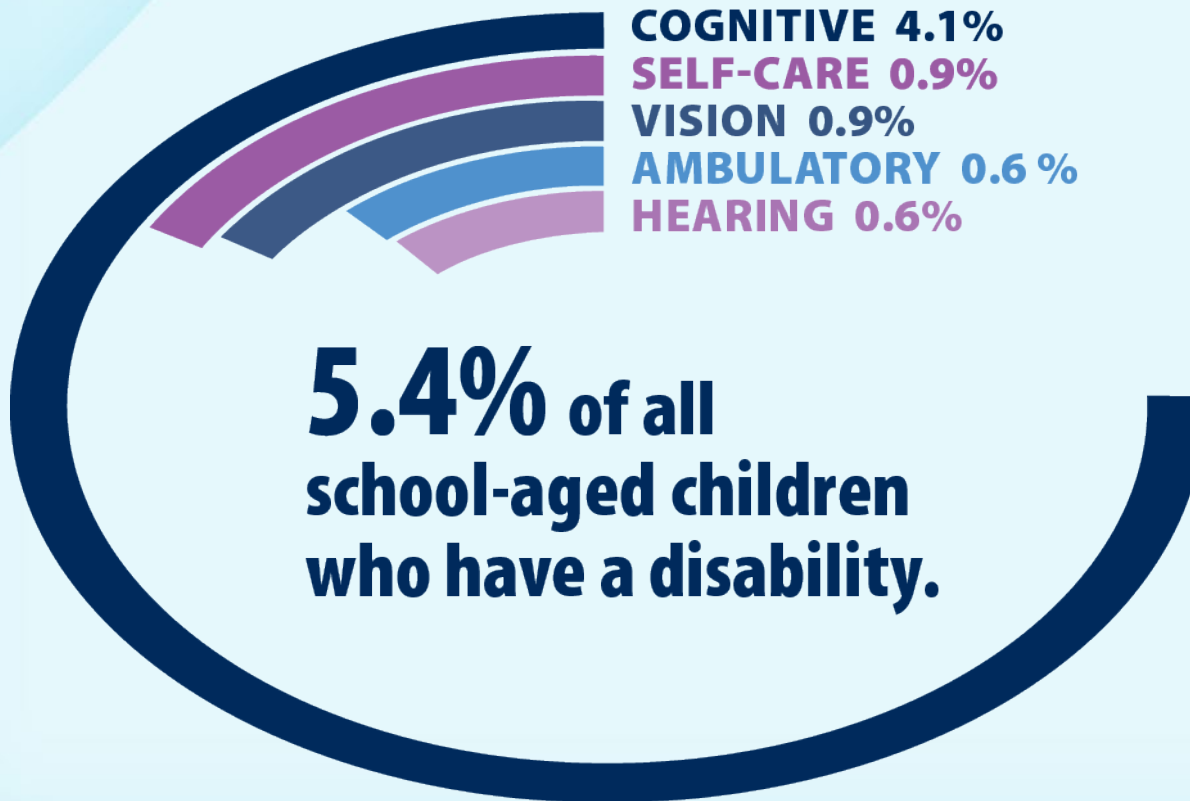
Birth to Age 2



94.9% of eligible infants and toddlers receive services in home/community setting.

DISABILITIES BY TYPE

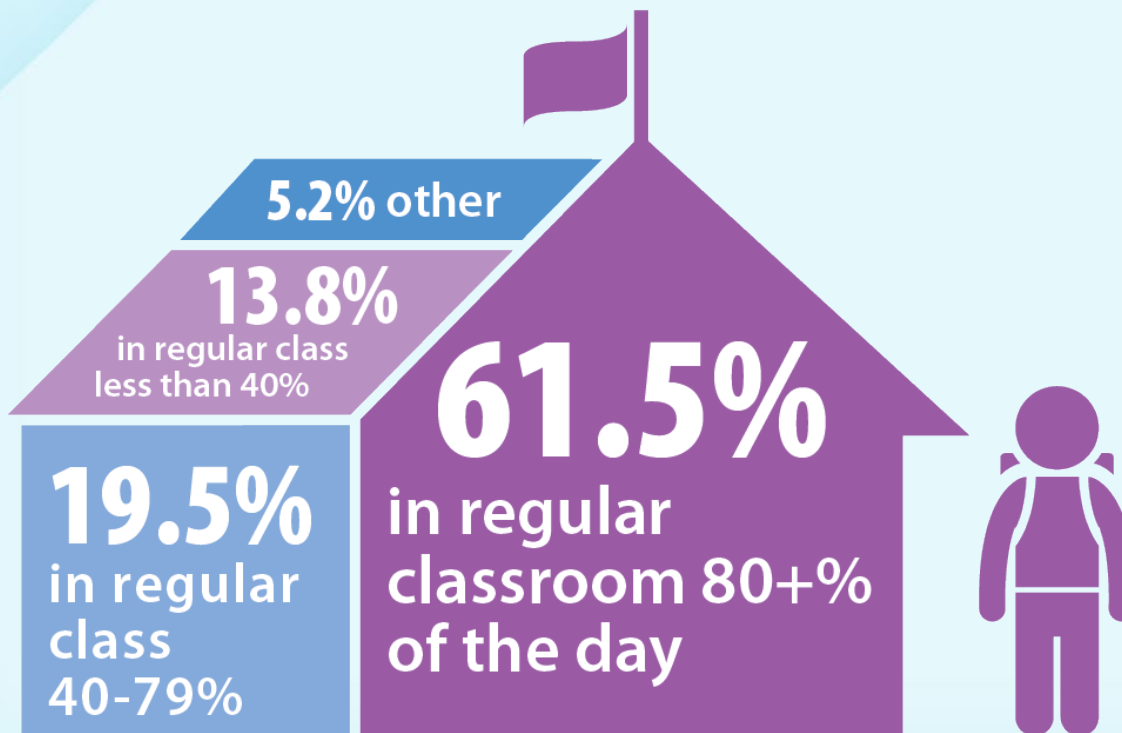
Ages 5-17



LEARNING ENVIRONMENT

Ages 6-21

% of School Day Spent in an Integrated Class



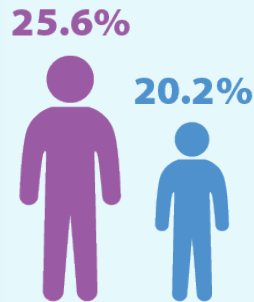
POVERTY RATE Birth to Age 17



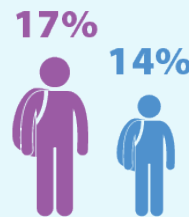
1 in 3 children with a disability live in poverty.

SPECIAL EDUCATION STUDENTS EXITING HIGH SCHOOL Ages 14-21

2006-2007
2011-2012



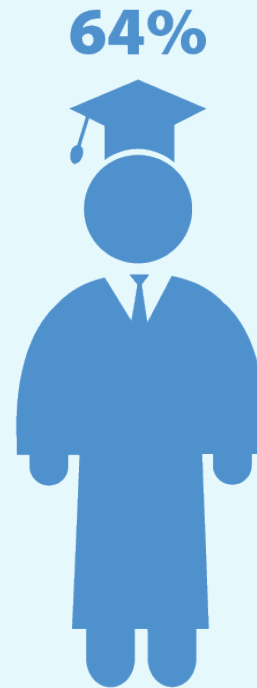
**Dropped
Out**



**Received
Certificate**



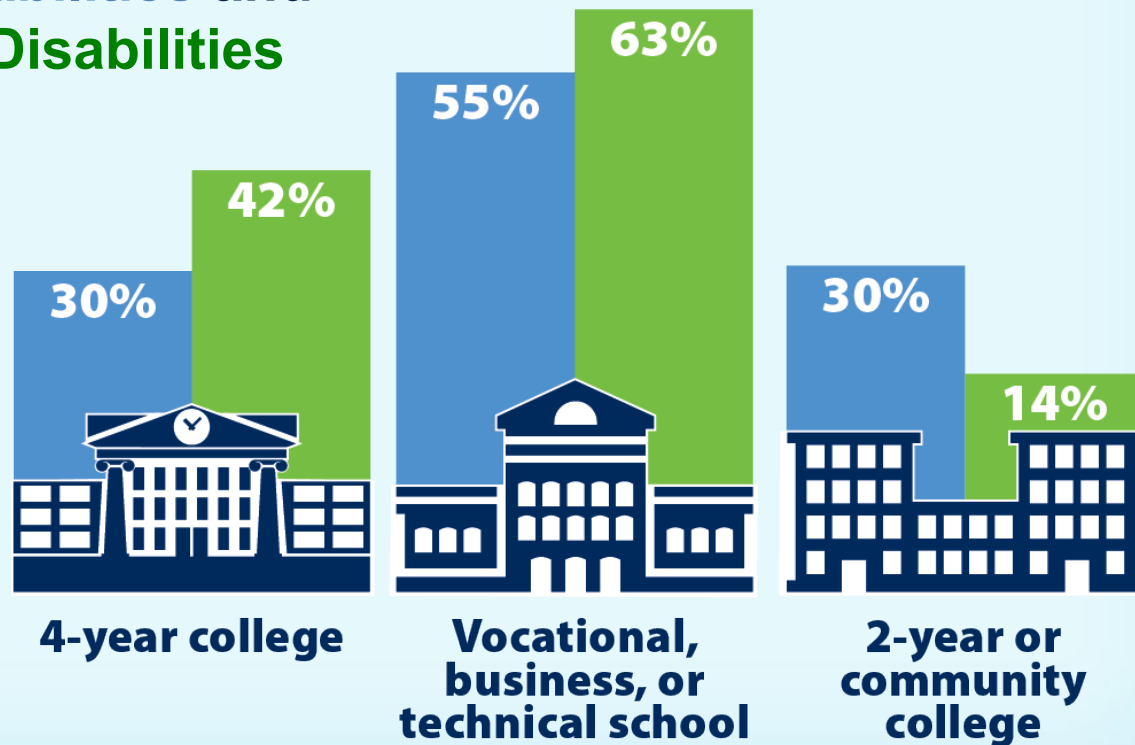
**Graduated
with Diploma**



**Graduated
with Diploma**

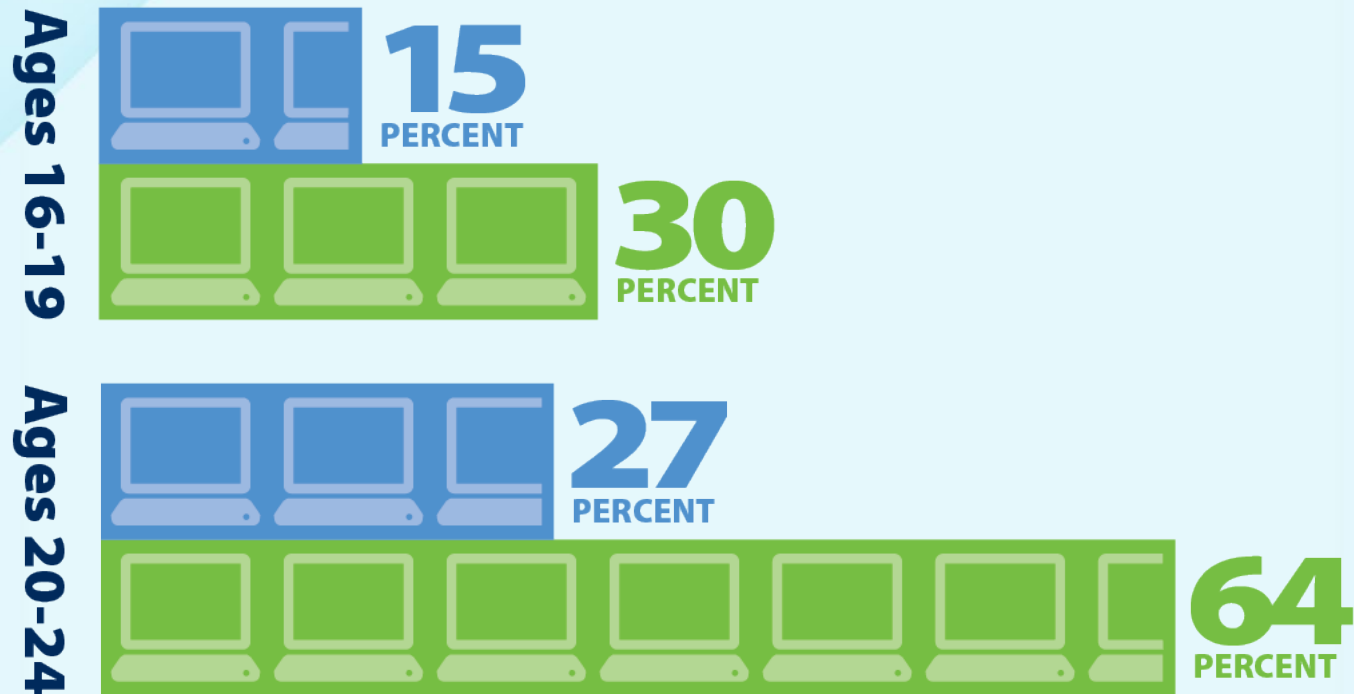
POSTSECONDARY EDUCATION GRADUATED OR COMPLETED PROGRAM

With Disabilities and
Without Disabilities



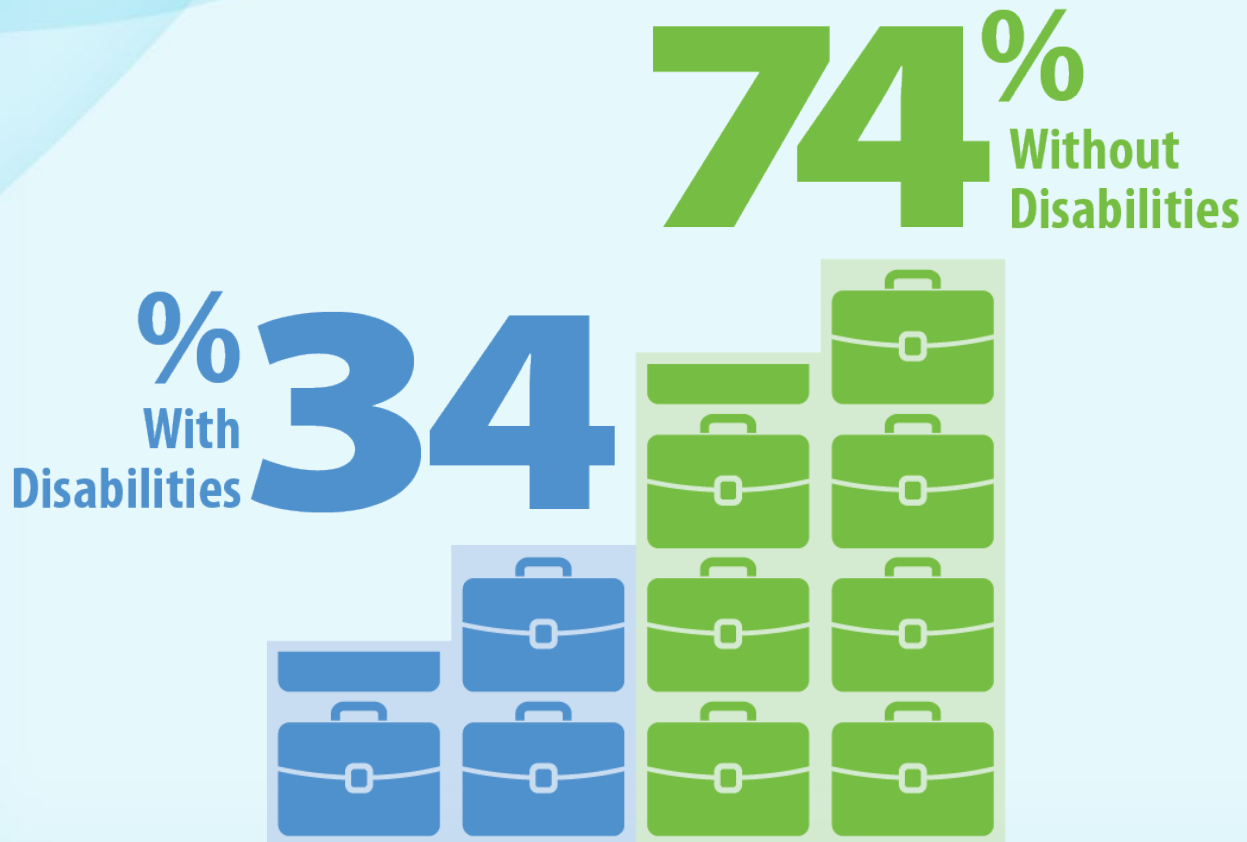
YOUTH EMPLOYMENT Ages 16-24

With Disabilities and **Without Disabilities**

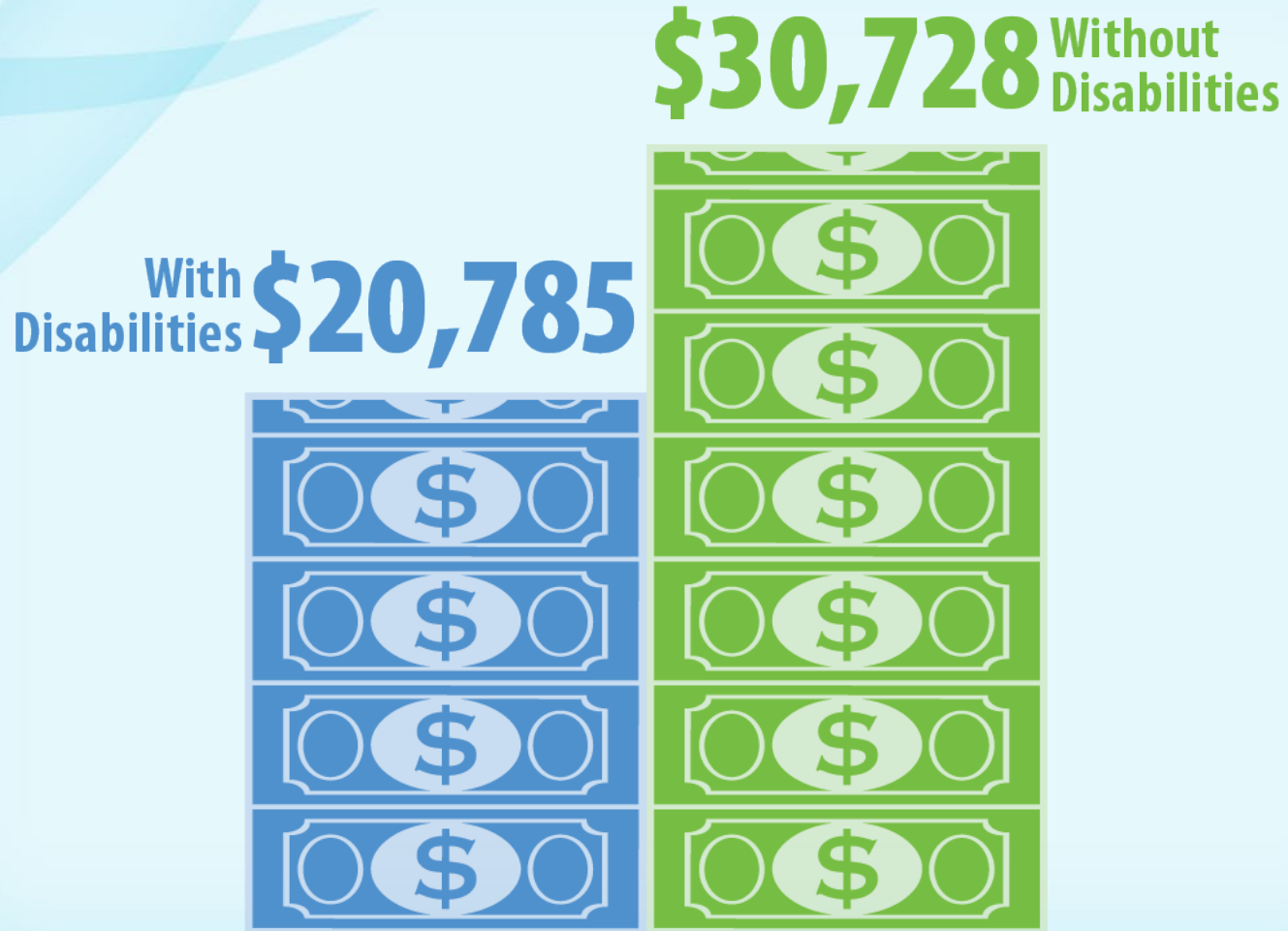


EMPLOYMENT RATE

Ages 18-64

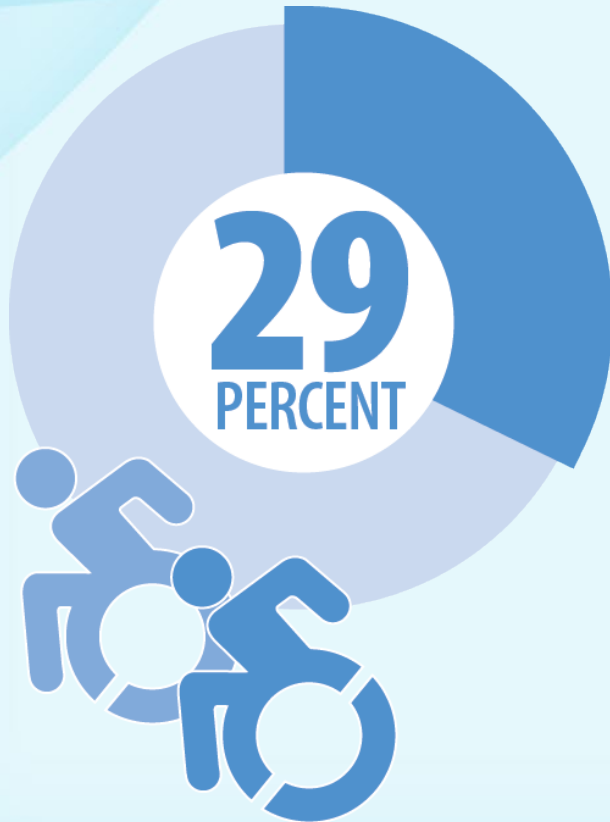


MEDIAN EARNINGS Ages 16+



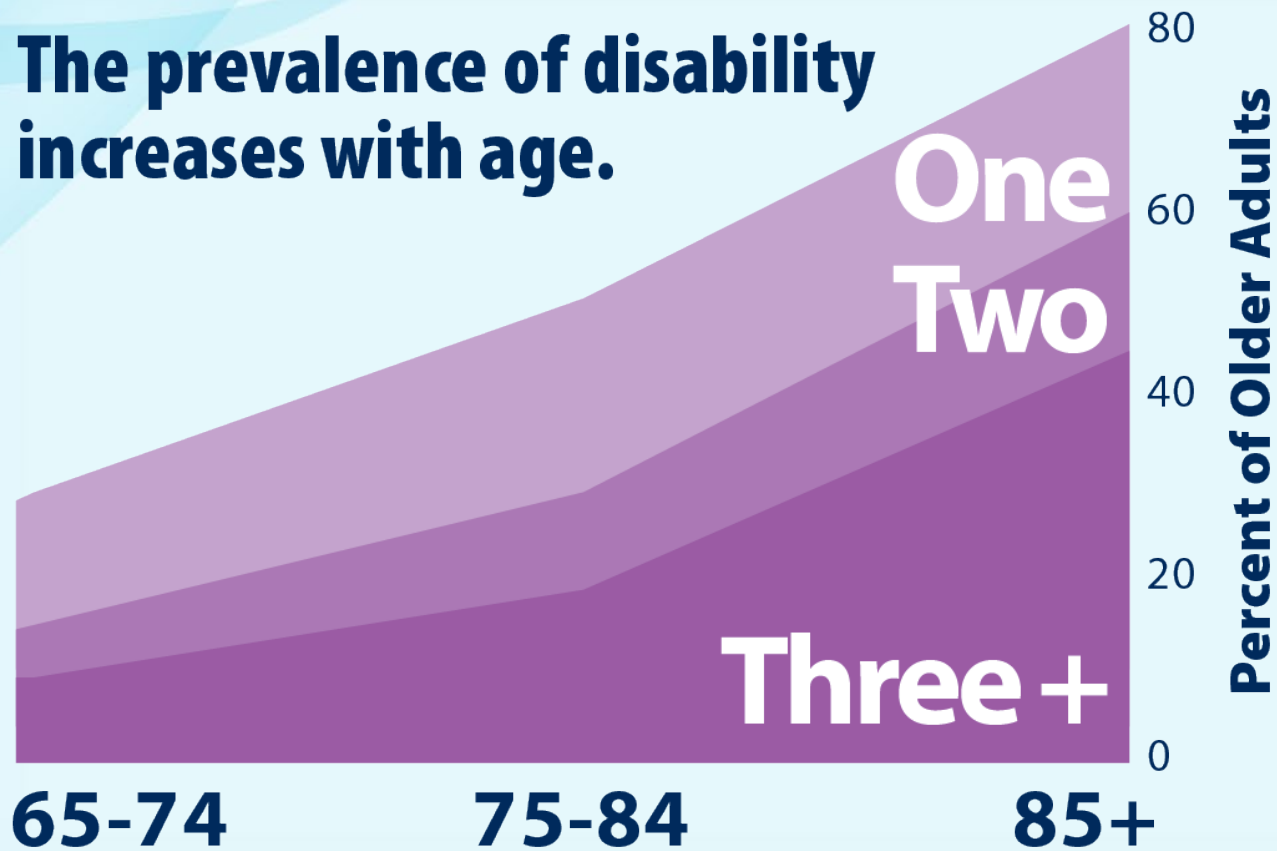
POVERTY RATE Ages 18-64

With Disabilities and **Without Disabilities**

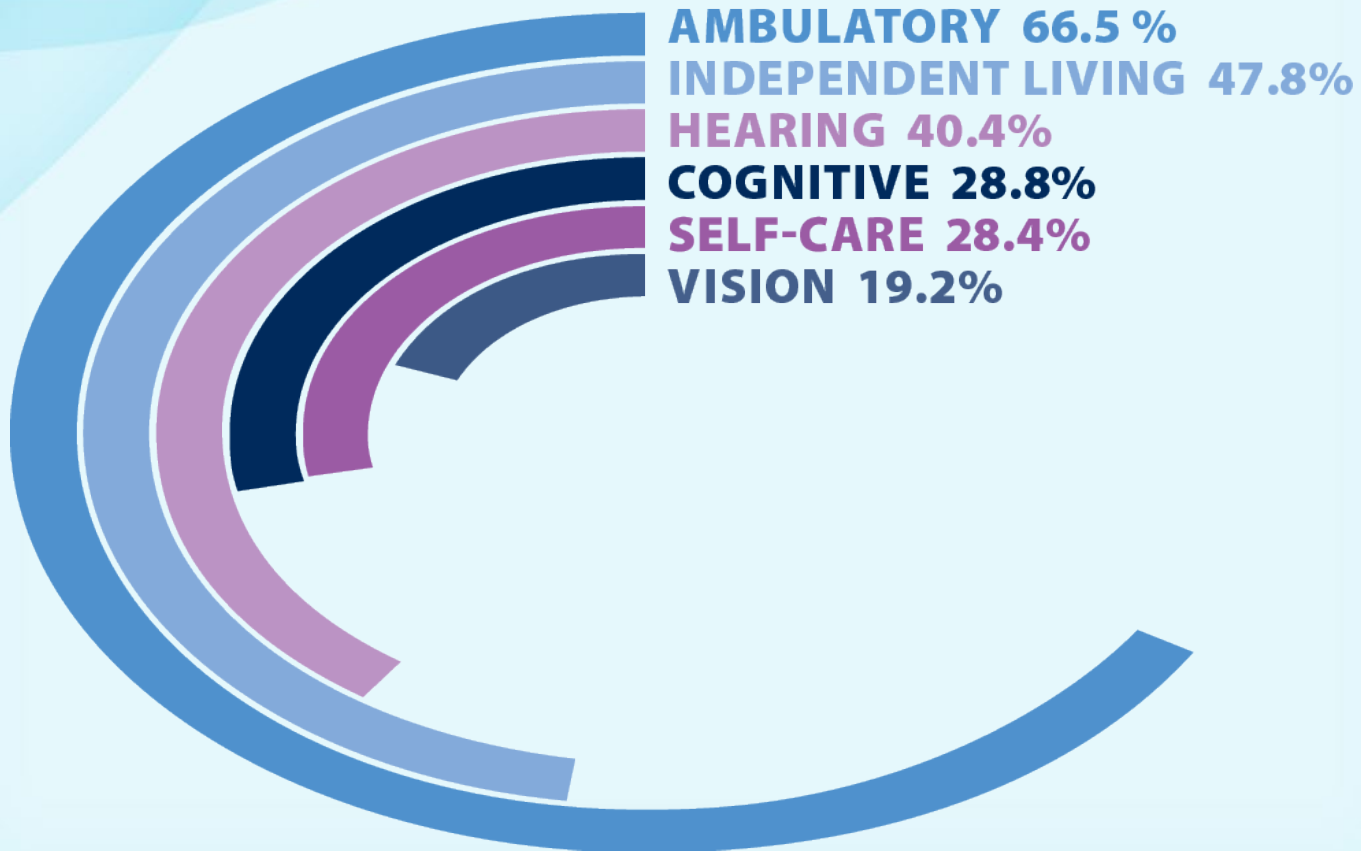


NUMBER OF DISABILITIES BY AGE

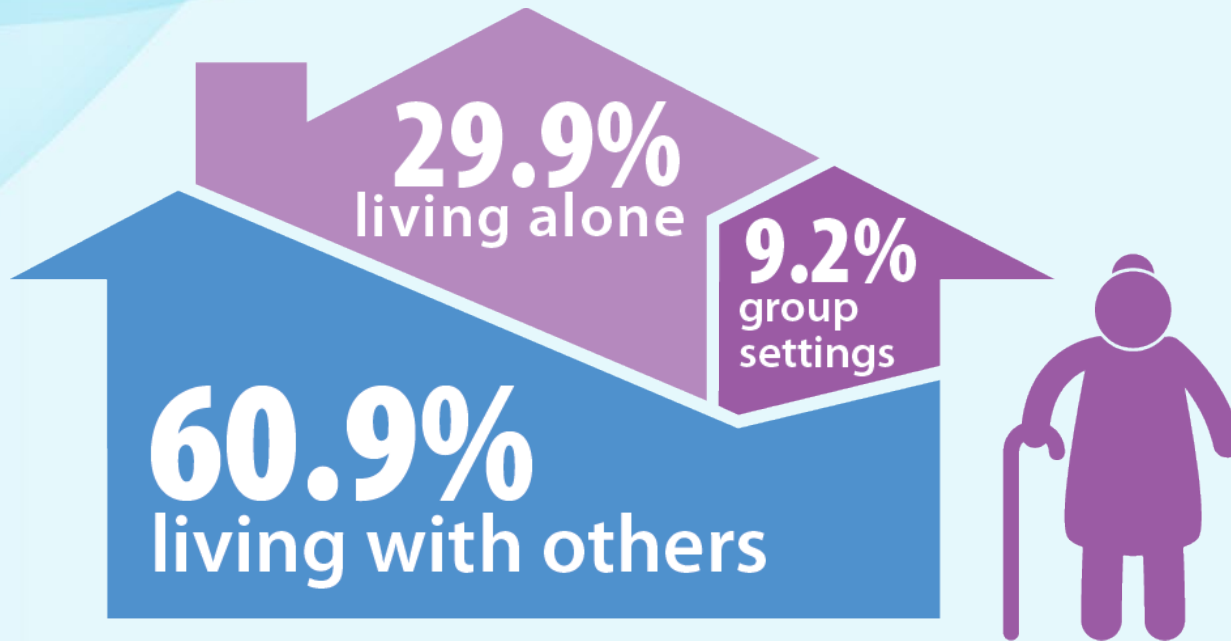
The prevalence of disability increases with age.



DISABILITIES BY TYPE Age 65+



LIVING ARRANGEMENTS Age 65+



OLDER ADULTS Age 65+



40% of all seniors with disabilities suffer from hunger.

PROFILE OF AMERICANS WITH DISABILITIES

17% poverty rate for veterans with disabilities ages 18-64 (2013)

Nearly 1 in 5 people had a disability in the U.S. (2010)

Health insurance rates for people with disabilities ages 18+ (2013)

- 44% Private insurance
- 51% Public insurance (some have both)
- 16% No insurance

56% of individuals achieved successful employment through vocational rehabilitation (2012)

1.15 million youth ages 13-25 received Supplemental Security Income (SSI) benefits (2012)

9% of youth ages 6-21 received special education services (2012)

43% of total Medicaid payments were made for people with disabilities (2011)

14% of the total number of persons served by Medicaid were people with disabilities (2011)

29% disability prevalence rate for veterans (2013)

Older women are more likely than older men to have five of the six types of disability (2012)





For more information, please visit: www.nasuad.org

Or call us at: **202-898-2578**