



# STATE OF THE STATES IN AGING AND DISABILITY

*2014 Survey of State Agencies*



# STATE OF THE STATES IN AGING AND DISABILITY

***2014 Survey of State Agencies***

*Damon Terzaghi*

*Erin White*

# TABLE OF CONTENTS

Message from the Executive Director .....	iii
Executive Summary.....	v
Methodology.....	1
Themes Emerging from the 2014 Survey .....	2
<b>Theme 1</b> Loss of Historical Knowledge is Nationwide.....	3
<b>Theme 2</b> Agency Restructuring Continues to be Common.....	5
<b>Theme 3</b> Managed Long-Term Services and Supports Continues to Expand .....	5
<b>Theme 4</b> Budgets and Growing Demand to Services are Top State Aging and Disability Agency Concerns.....	11
<b>Theme 5</b> Adult Protective Services are Under Pressure.....	13
Update on State HCBS Authority Adoption .....	16
Conclusion.....	19
State-by-State Summary Tables .....	21
<b>Table 1</b> Structure of State Agencies .....	22
<b>Table 2</b> State Reporting Structures .....	25
<b>Table 3</b> Components of LTSS for Which State Agency is Responsible .....	28
<b>Table 4</b> Populations Served by State Aging and Disability Agencies.....	32
<b>Table 5</b> Appointment of State Agency Directors.....	34
<b>Table 6</b> Sources of Funding for State Agencies on Aging and Disabilities.....	36
<b>Table 7</b> State-Funded HCBS for Older Adults and Adults with Physical Disabilities.....	40
<b>Table 8</b> Status of Medicaid LTSS Programs .....	44
<b>Table 9</b> Medicaid HCBS Waiver Services Available to Older Adults and/or People With Disabilities.....	48
<b>Table 10</b> Operating Agency Responsible for Medicaid LTSS Programs.....	54
<b>Table 11</b> State Agencies Providing Federally-Funded, Non-Medicaid Programs/Services for Older Adults .....	56
<b>Table 12</b> State Agencies Providing Federally-Funded, Non-Medicaid Programs/Services for Individuals with Physical Disabilities.....	62
<b>Table 13</b> Primary LTSS Medicaid Funding Authority by Target Population .....	68

## DEAR STATE DIRECTOR,

In 2014, NASUAD surveyed state aging and disability agencies regarding the significant policy, fiscal, and operational issues occurring within each state. We appreciate the time, effort, and expertise provided by you and your staff in order to complete the survey and to answer follow-up questions.

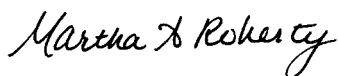
During the survey, we collected detailed information about the structure of agencies, the supports provided, and the populations served by aging and disability agencies. Of particular interest is the summary of services provided in Medicaid waivers across the country. All of this information is presented in the charts accompanying this document.

Since 2008, states have struggled with staff reductions, furlough days, and increasing pressure to make programs function with fewer resources while ensuring delivery of services. These problems, highlighted in our 2011 and 2012 surveys, remain true today. The aging network continues to face challenges with restructuring, reductions in staffing levels, and limited funding. This survey represents a yearlong research project based on the essential contributions of state aging and disability agencies whose staff completed a lengthy survey and participated in follow up interviews. We would like to thank the agency staff for their valuable time invested in the data collection for this document, especially in an era of increasing demands and limited staff.

We also would like to thank both the central and regional office staff of the U.S. Administration for Community Living and the Centers for Medicare & Medicaid Services for their valuable insights and suggestions on our reports. Additionally, our partners in the aging and disability communities provided important suggestions on how to improve upon earlier versions of this *State of the States* report.

Finally, the NASUAD Board of Directors, under the leadership of President Gloria Lawlah, Maryland Secretary of Aging, provided essential direction. The entire NASUAD staff was involved in the effort with final project guidance provided by Damon Terzaghi, Senior Director of Medicaid Policy and Planning. However, in particular, Erin White and Deborah Merrill provided critical assistance and input. We would also like to thank former NASUAD staff, Mike Hall and Grace Cho, who initiated this project and left a strong foundation for other staff to complete.

Sincerely,



Martha A. Roherty

Executive Director

# BOARD OF DIRECTORS

## Officers of NASUAD's Board of Directors 2013–14

### *President*

**Gloria Lawlah**, Secretary of Aging  
Maryland Department on Aging  
*Baltimore, MD*

### *Vice President*

**James Bulot**, Director  
Georgia Division of Aging Services  
*Atlanta, GA*

### *Secretary*

**Lora Connolly**, Director  
California Department of Aging  
*Sacramento, CA*

### *Treasurer*

**Gary Jessee**, Deputy Director  
Program Operations-Medicaid/CHIP,  
Health and Human Services Commission  
*Austin, TX*

### *Immediate Past President*

**Lance Robertson**, Director  
Oklahoma Aging Services Division  
*Oklahoma City, OK*

## EXECUTIVE SUMMARY

State aging and disabilities agencies are operating in an unprecedented era of state agency reorganization, re-conceptualization of state government, and restructuring of long-term services and supports delivery systems and financing. Each *State of the States* report since 2009 has demonstrated the challenges faced by aging and disability agencies during a period of growing demand for services and constrained financial resources. The 2014 report demonstrates a continuation of these trends as well as ongoing state activities to modernize their programs in order to maintain quality service provision in a time of significant turmoil.

Although the nation's economy has been in recovery since the 2007 "great recession," state revenue has not grown at the same level as service demand increases. These challenges are exacerbated by spending reductions at the federal level, driven by the Budget Control Act of 2011 and the resulting pressure on discretionary appropriations. States must address these funding issues in the context of an increasing senior population and a corresponding increase in demand for services.

In 2014, as in prior surveys, states report undergoing agency restructuring to better align various long-term services and supports (LTSS) programs. Notably, the restructuring has increasingly included consolidating entities responsible for policy and programming for individuals with developmental disabilities into the agency responsible for Older Americans Act programs.

Lastly, while states continue to implement ways to coordinate and integrate care for individuals who use LTSS, the rate of growth appears to be slowing. States still express interest in innovative models that align primary and acute care with LTSS. However, many states report that their focus is on implementing initiatives that are already underway instead of initiating new projects.

Five key themes related to LTSS systems transformation emerged from our analysis of the 2014 survey data:

- **Loss of Historical Knowledge is Nationwide.** Agency director tenure is relatively short and turnover continues to be an issue. As evidenced in our prior surveys, leadership changes continue to occur at the highest levels as well as throughout the agency. Prior surveys noted a significant number of state agency employees who were eligible for retirement; in this survey, the number of retirement-eligible employees decreased. Based on conversations with states, the number decreased largely due to staff that exercised their retirement rights or otherwise left the agency.

- **Agency Restructuring Continues to be Common.** States are continuing to reorganize how they conduct business and deliver services. The most notable change is the incorporation of services for individuals with developmental disabilities into the same agency as the unit on aging. Between 2012 and 2014, the percent of states reporting that these services were part of the agency grew from 20 percent to 40 percent.
- **Managed Long-Term Services and Supports Continues to Expand.** In 2009, six states operated a MLTSS program either regionally or statewide. NASUAD's 2014 survey indicates that 17 states are operating MLTSS programs and ten additional states intend to implement a program. This is a modest growth from 2012, when 26 states were either operating or planning to operate an MLTSS program. However, states continue to add new populations or service areas to already existing MLTSS programs.
- **Budgets and Growing Demand for Services are Top State Aging and Disability Agency Concerns.** The impact of federal spending reductions, coupled with sluggish state revenue growth, is forcing states to reduce services. Although many states reported that they were able to offset some of the funding reductions due to the Budget Control Act, the majority of states indicated an inability to avoid service reductions for the upcoming year.
- **Adult Protective Services are Under Pressure.** States are reporting increases in nearly every category of elder abuse, particularly financial abuse. However, Adult Protective Services (APS) funding and staffing levels have either been stagnant or decreasing in nearly 60 percent of the states. This increasing caseload coupled with decreasing funding is placing enormous pressure on state agencies as well as the individuals they serve.

The 2014 survey captured a snapshot of the states in a period of transition and change. Key elements driving continued change include the economic environment, Affordable Care Act implementation, uncertainty in the federal budget, changes in state-level leadership, and the 2014 elections.



## METHODOLOGY

Using a web-based survey instrument and related analytic database, NASUAD surveyed all 56 states and territories. All 50 states and the District of Columbia responded to the survey. The submitted information was cross-referenced with other data sources, including the Medicaid Integration Tracker, prior state surveys, and publicly available data from the Department of Health and Human Services. NASUAD staff organized the responses into summary tables and sent the tables to state staff for review. NASUAD staff also performed targeted phone calls to states in the event that survey data was omitted or conflicted with other available information. States submitted additions, corrections, and clarifications that were incorporated into the final tables and charts.

For the 2014 survey, NASUAD implemented a new survey tool and new questions. The modifications to the tool were driven by the rapidly changing roles of state agencies on aging and disability, and were designed to capture more detail regarding services and supports available to seniors and persons with disabilities. Particularly, the survey captures information on programs provided by agencies other than NASUAD members. This includes entities such as Medicaid and agencies that administer Medicaid home and community-based services (HCBS) waivers.

# THEMES EMERGING FROM THE 2014 SURVEY

In 2014, NASUAD administered a survey of State Aging and Disability Agencies regarding the significant policy, fiscal, and operational issues occurring within each state. During the survey, we collected detailed information about the structure of agencies, the supports provided, and the populations served by Aging and Disability agencies. Of particular interest is the summary of services provided in Medicaid waivers across the country. All of this information is presented in the charts accompanying this document.

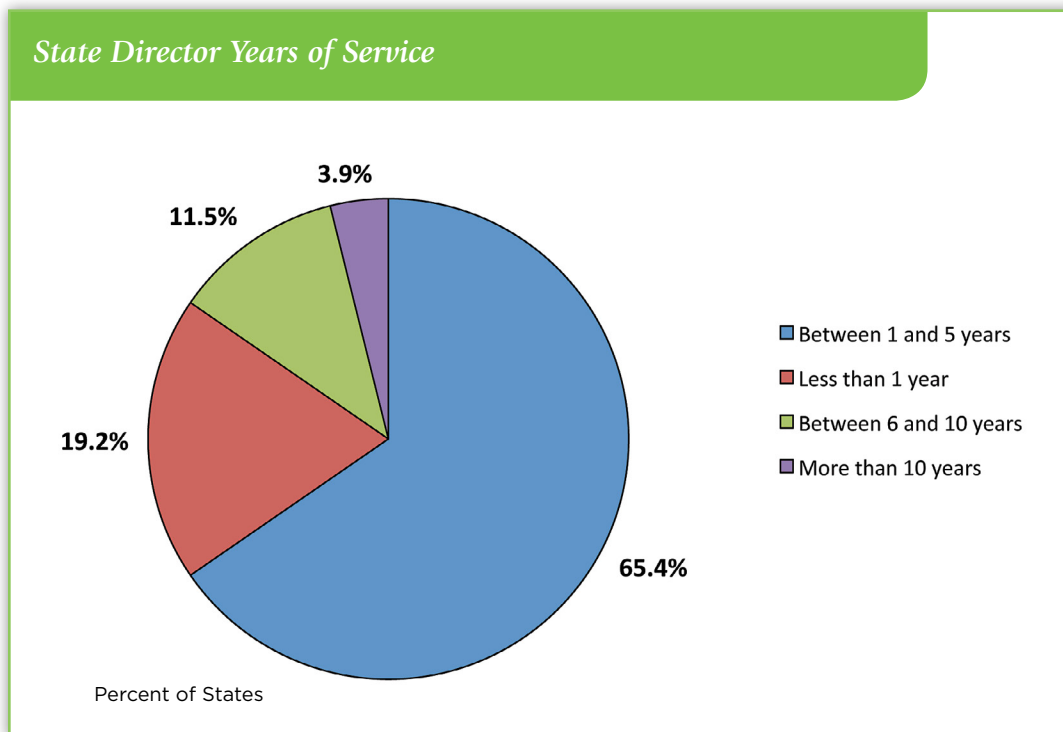
Several key issues emerge as common themes across the country. The themes include:

1. Loss of Historical Knowledge is Nationwide;
2. Agency Restructuring Continues to be Common;
3. Managed Long-Term Services and Supports Continues to Expand;
4. Budgets and Growing Demand for Services are Top State Aging and Disability Agency Concerns; and
5. Adult Protective Services are Under Pressure.

As you prepare for the 2015 legislative sessions at the state and federal level, we believe that the following takeaways from the survey are crucial to understanding the dynamics of services for seniors and individuals with disabilities in your state and across the country.

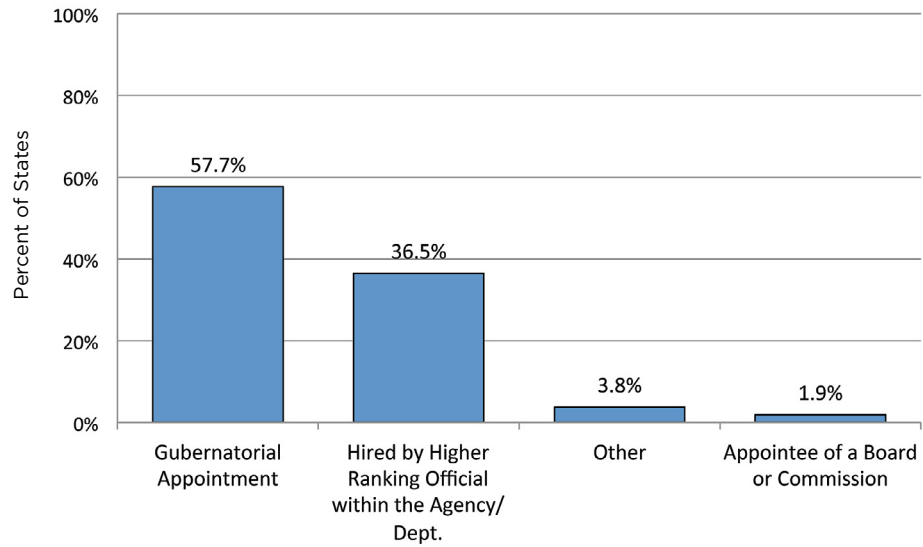
## Loss of Historical Knowledge is Nationwide.

State aging and disability agency director tenure is relatively short and executive turnover continues to be an issue across the country. As evidenced in our prior surveys, leadership changes continue to occur at the highest levels as well as throughout the agency. In 2014, over 80 percent of State Directors indicated that they have been in their position for less than five years. Nearly 20 percent of Directors reported serving for less than one year at the time of the survey.



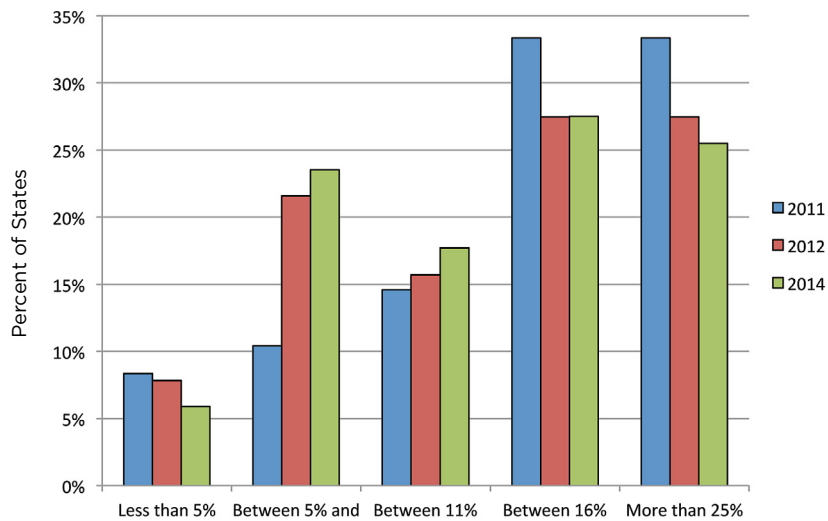
This turnover is likely to be exacerbated by the 2014 fall elections. State aging and disability directors are largely political appointees; over half of the state directors are directly appointed by the Governor. In states where the Governor does not make a direct appointment, the director is frequently hired by an individual that is a political appointee. In total, over 90 percent of state directors are either a political appointee or directly hired by a political appointee. These dynamics, coupled with the fact that 36 states and the District of Columbia are holding elections in 2014, are likely to result in additional turnover within executive branches across the country.

### State Director Appointment



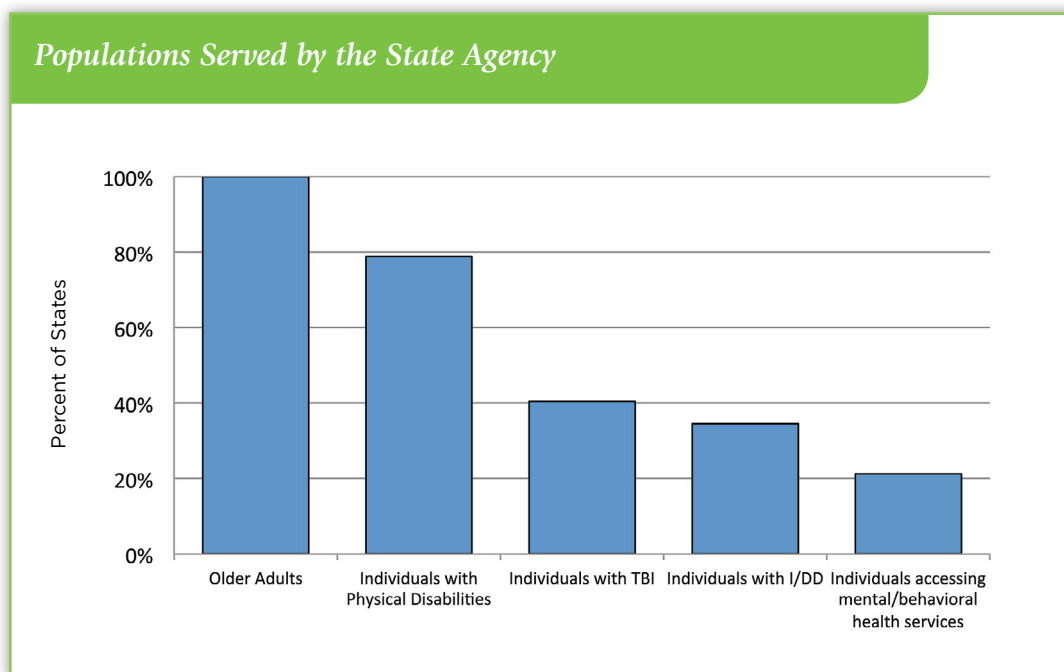
The significant state employee turnover is not limited to agency leadership. In prior surveys, NASUAD found that a significant number of state agency employees were eligible for retirement. In this survey, states continued to report a significant amount of retirement-eligible employees; however, the total number decreased. Based on follow-up conversations with states, we believe that the number decreased largely due to staff that exercised their retirement rights or otherwise left the agency. As such, new administrations must recognize that institutional knowledge must be rebuilt during a time of administration change.

### Percentage of State Agency Staff Eligible for Retirement During the Next Five Years



## Agency Restructuring Continues to be Common.

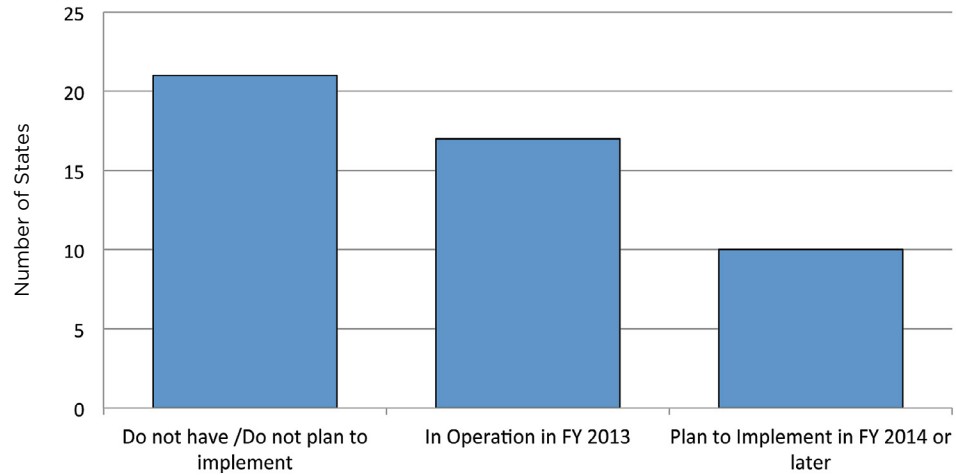
Due to changes in the way that services are authorized and delivered, many states are reorganizing their administrative structures. This has included consolidating a number of health and human services agencies within a larger organization. The most notable change is the incorporation of services for individuals with intellectual and developmental disabilities into the same agency as the unit on aging. Between 2012 and 2014, the percent of states reporting that these services were part of the agency grew from 20 percent to 40 percent. This restructuring leads to new operational efficiencies, as well as new challenges in ensuring that services are appropriate and tailored to the needs of specific individuals and populations.



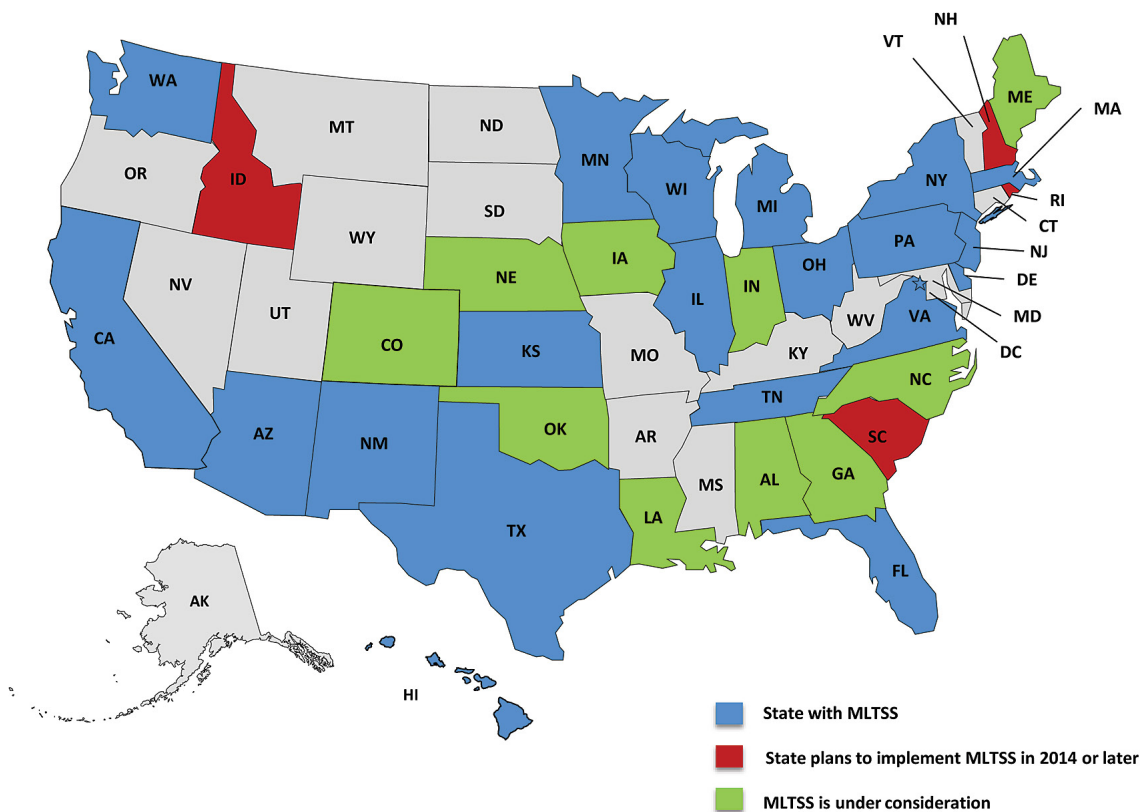
## Managed Long-Term Services and Supports Continues to Expand.

In 2009, six states operated a Managed Long-Term Services and Supports (MLTSS) program either regionally or statewide. NASUAD's 2014 survey indicates that 17 states are currently operating MLTSS and 10 additional states intend to implement a program. This is a modest growth from our last survey in 2012, when 26 states were either operating or planning to operate an MLTSS program. The slower growth in managed care is not surprising given the competing demands on Medicaid agencies in 2013, most particularly implementing the new eligibility requirements of the Affordable Care Act (ACA) and coordinating with its State Exchange or the Federal Marketplace. Given the significant amount of staff work, policy development, stakeholder engagement, and oversight required to implement new managed care programs, states were likely unable to devote the resources required for a successful MLTSS launch as they were implementing mandatory and optional changes under the ACA.

## Status of Managed LTSS in States

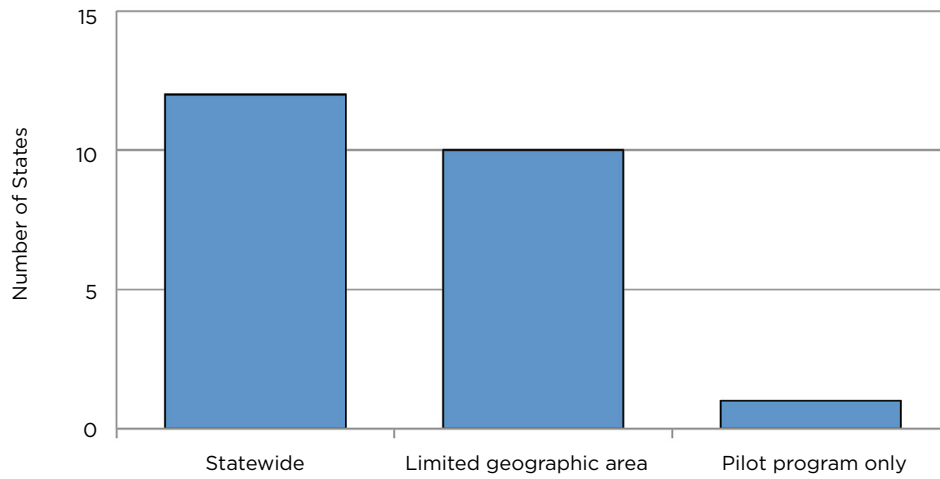


## Status of State Managed LTSS (MLTSS) Programs

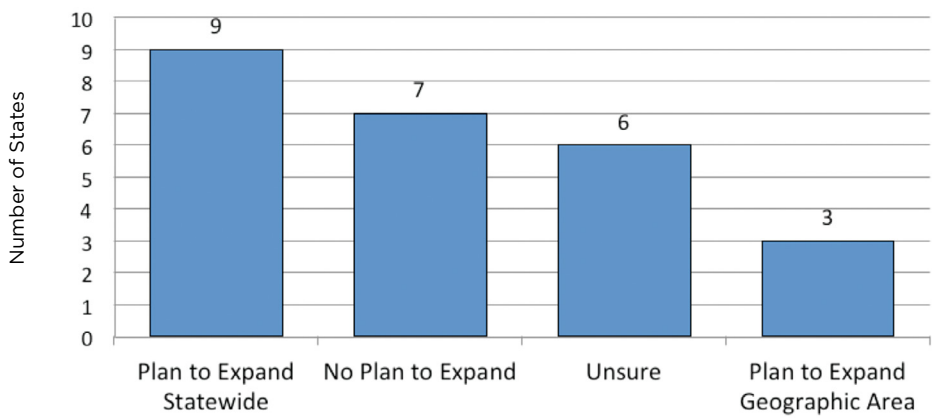


Despite the slower rate of growth in states operating or planning to operate MLTSS programs, policy and operational issues associated with these programs continue to be a significant area of focus nationally and in many states. A number of states that previously operated more limited MLTSS programs have expanded to include new geographic regions and new populations. States were also asked whether they intended to limit the geographic area served by MLTSS plans. No state indicated intent to decrease the geographic scope of MLTSS.

*Geographic area currently served by Managed LTSS program*

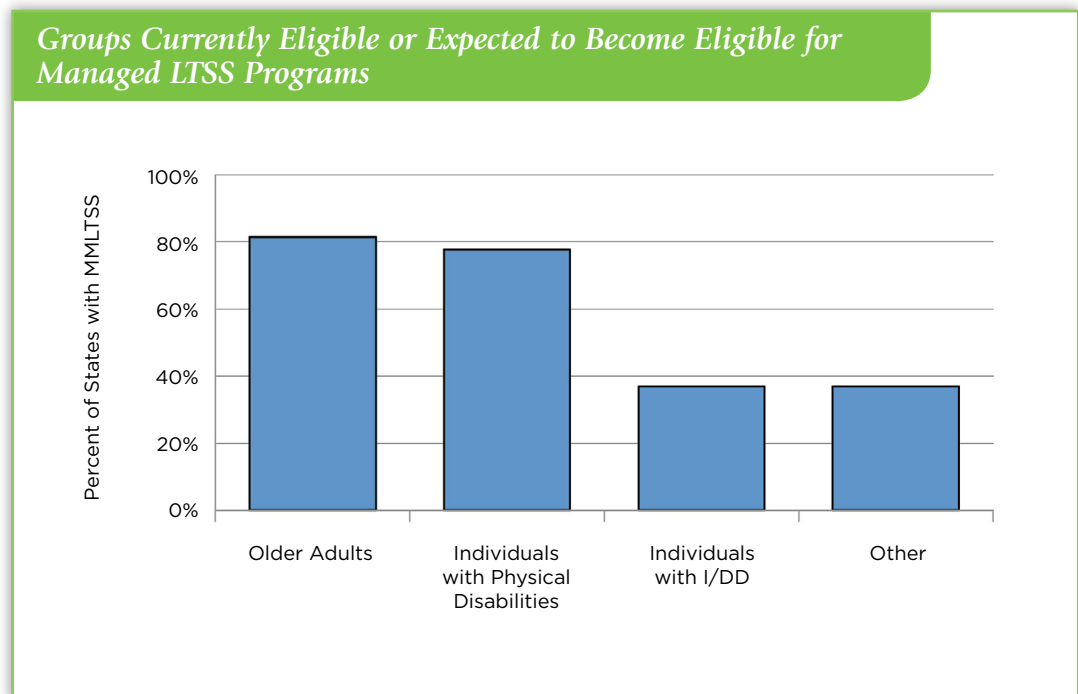


*State plans to expand geographic area served by Managed LTSS*



States have generally enrolled seniors and people with physical disabilities into MLTSS programs before including additional populations. States continue to express an increasing interest in the integration of services for individuals with intellectual and developmental disabilities into their programs. Historically, these individuals have often been excluded from MLTSS programs for a number of reasons. However, as state agencies and managed care plans become more experienced in providing MLTSS, policymakers are beginning to add new services and populations into the managed care delivery systems.

Several states also indicated “other” populations were included in their MLTSS initiatives. Individuals with behavioral health conditions was the most common group that states identified as an “other” population in this survey. Recently, states have been increasingly looking for ways to provide comprehensive supports for individuals with behavioral health conditions, including psychosocial rehabilitation services, day treatment, supported employment, and other community-based services. The development of these community-based supports for people with behavioral health conditions has created a new set of LTSS services for an additional population.



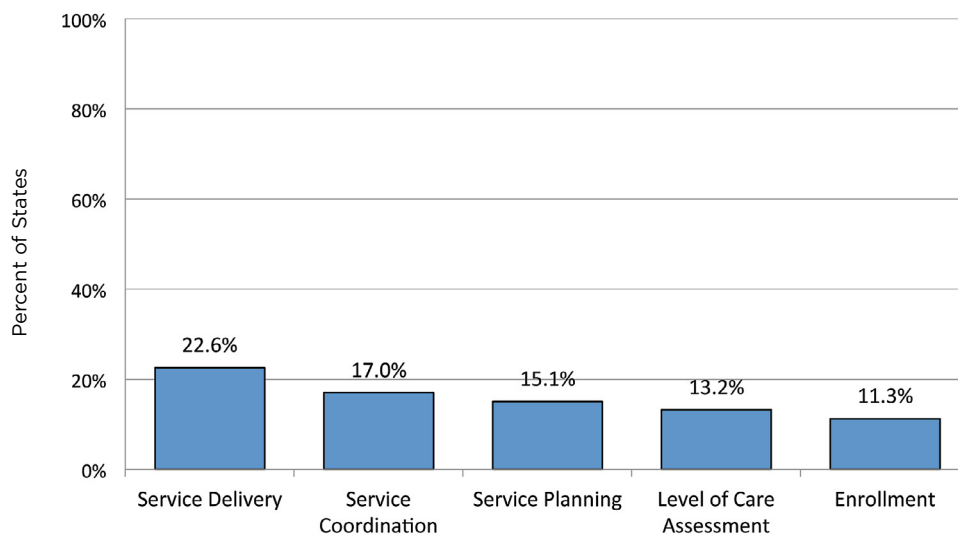
The expansion of MLTSS has presented new challenges to local organizations, such as Area Agencies on Aging, Centers for Independent Living, and other providers that have historically delivered home and community-based services to seniors and people with disabilities. These local agencies generally have a long history of delivering case management, participant assessments, or direct services to Medicaid beneficiaries living in the community. However, as states implement MLTSS, these functions become the responsibility of managed care plans. While the aging and disability networks can offer value to the managed care plans as a trusted community resource, they encounter challenges in becoming a managed care plan provider. This can be due to a variety of influences, such as a lack of business acumen needed



to secure competitive contracts with plans, an inability to engage MCO service planners, challenges providing a financially competitive product with other available providers, rapid MLTSS implementation impeding the ability of entities to engage plans and policy makers, or a lack of coordination between Medicaid and aging or disability agencies.

As such, few states that are operating or planning to implement MLTSS report that local agencies will have significant involvement in the program. Both NASUAD and ACL are working to address this issue by providing technical assistance to the aging and disability network to improve their business capacity.

### Local Agency involvement in Medicaid MLTSS programs (current or planned)

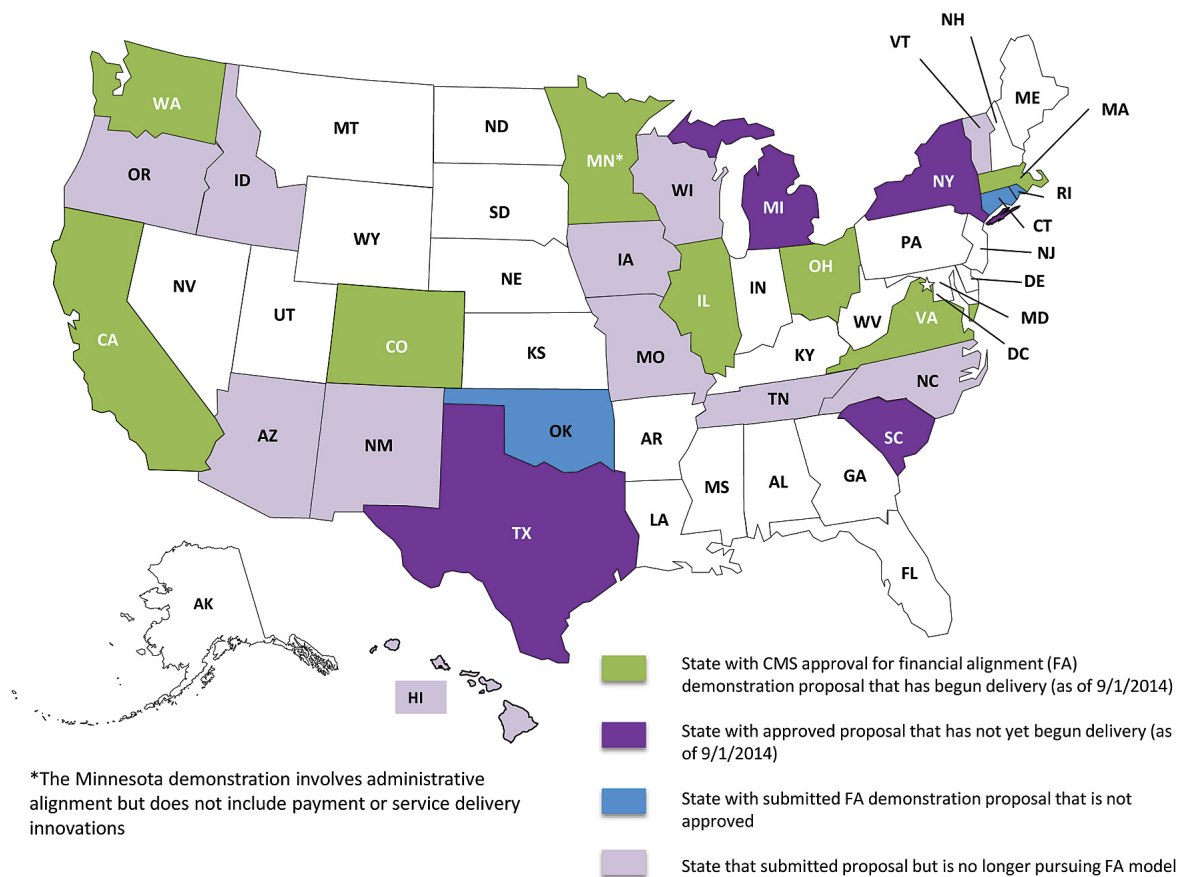


Some of the state MLTSS expansion has been driven by CMS' Financial Alignment Demonstration. CMS launched the initiative in 2011 in order to better align Medicare and Medicaid benefits for individuals that are eligible for both programs. Historically, individuals eligible for both Medicare and Medicaid have experienced challenges due to the disparate responsibilities of each payer and the inability of the programs to share data and coordinate care. These challenges are especially pronounced for individuals who utilize LTSS, as the primary, acute, and post-acute services are covered by Medicare, while the LTSS are covered by Medicaid.

The Financial Alignment Demonstration, commonly known as the "Duals Demonstration", involves a partnership between states and the federal government to align Medicaid and Medicare services, finances, and administrative authorities. Under the demonstration, states have the opportunity to either enter into a joint contract with CMS and private health plans in a fully capitated arrangement or to use a managed fee-for-service model with integrated care coordination across Medicare and Medicaid and shared savings between CMS and the state. In 2011, CMS received 37 letters of intent from states interested in participating in

the initiative. Subsequently, 26 states submitted formal applications to participate in the demonstration. Eleven of those 26 states have withdrawn their applications due to a range of issues, including challenges with the financial process, a desire to leverage alternate methods for integration, or an inability to prioritize the demonstration in relation to other activities. As of September 2014, eight states had begun delivering services, while an additional four states received CMS approval for their demonstration but had not yet begun service delivery. Three states that submitted proposals have not received approval but remain in negotiations with CMS.

### Financial Alignment Demonstration Participation

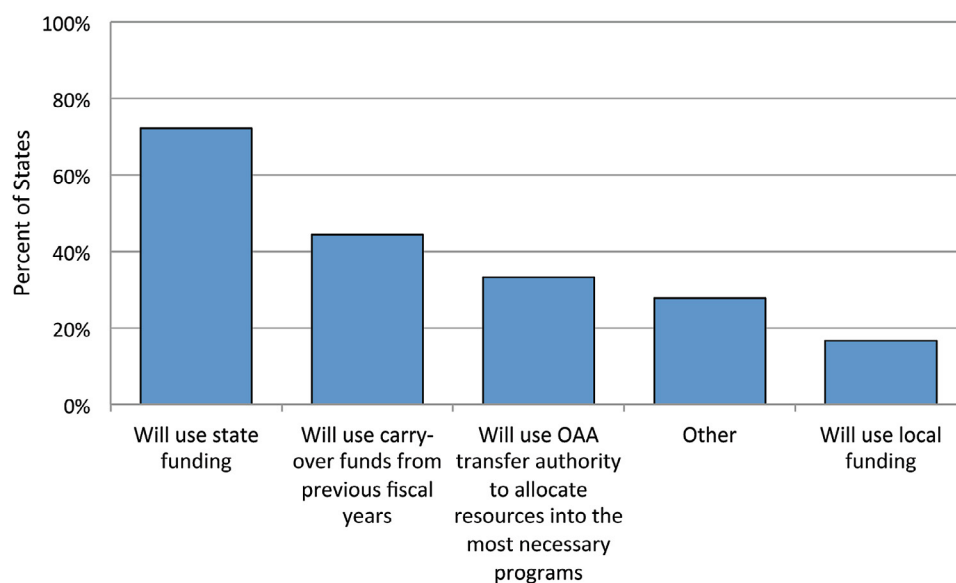


## Budgets and Growing Demand for Services are Top State Aging and Disability Agency Concerns.

The impact of federal spending reductions, coupled with sluggish state revenue growth, is causing states to reduce services. The Budget Control Act and the resulting pressure on discretionary programs placed significant pressure on many programs that provide services to older adults.

In the survey, over 80 percent of states reported that they would offset some of the effects of the federal spending reductions. States drew from a wide range of funding sources to offset the cuts to federal funding, with the majority of agencies reporting that they accessed state funds to reduce the impact of the reductions. However, despite modest growth in state revenue since the end of the most recent recession, overall budgets remain under pressure. According to the National Association of State Budget Officers, after adjusting for inflation aggregate state expenditures in FY2014 remain below 2008 levels.<sup>1</sup>

*Funding Sources the State Agencies Relied on to Close the Funding Gap caused by the Budget Control Act (2013)*



<sup>1</sup> The Fiscal Survey of States, National Association of State Budget Officers, Spring 2014, [http://www.nasbo.org/sites/default/files/NASBO%20Fiscal%20Survey\\_July\\_17\\_2014.pdf](http://www.nasbo.org/sites/default/files/NASBO%20Fiscal%20Survey_July_17_2014.pdf)

Although many states reported that they were able to offset some of the effects of the Budget Control Act reductions in 2013, 64 percent of states reported that they did not believe they could offset the effects in 2014. The lack of ongoing, sustainable funding is likely to lead to further service reductions in the future.

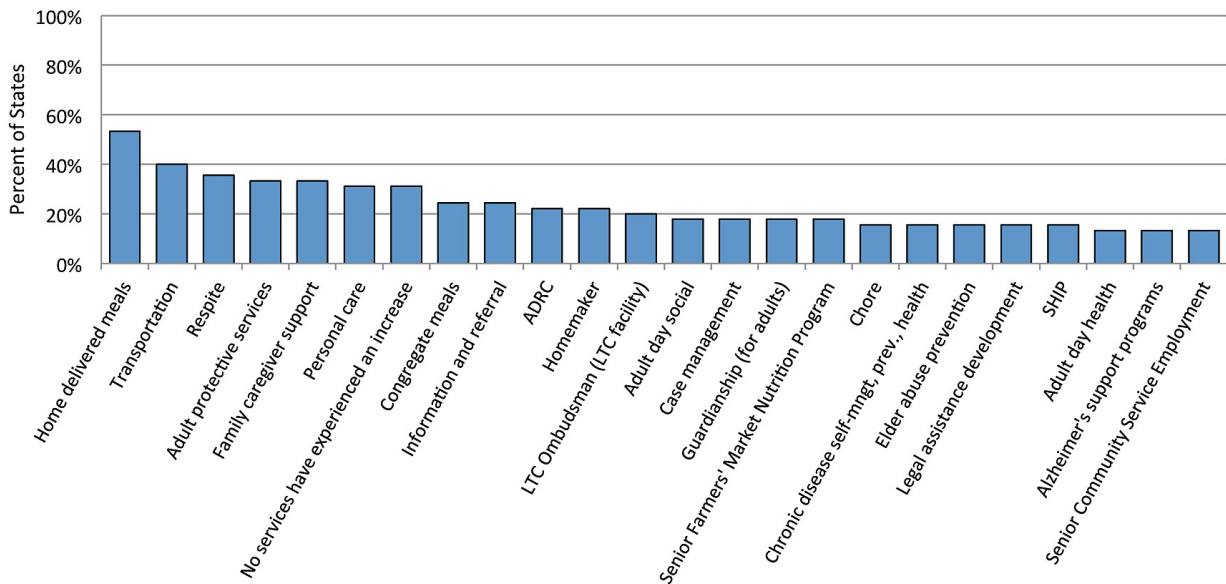
In response to these funding challenges, a significant number of states were forced to create and expand waiting lists, reduce caseloads, or implement other reductions to a variety of services. Of particular importance, funding for Older Americans Act Nutrition Services was reduced to approximately \$768.3 million in FY2013, down from approximately \$819.5 million in FY2010. As the survey shows, despite efforts to redirect funding from other sources, service reductions were prevalent across OAA programs.

### *OAA Programmatic Changes Implemented by States*

	<i>IIIB</i> % of States	<i>IIC1</i> % of States	<i>IIC2</i> % of States	<i>IIIE</i> % of States	<i>VII</i> % of States
<b>Served fewer people</b>	90.0%	90.0%	80.0%	80.0%	50.0%
<b>Closed the program to new clients</b>	50.0%	50.0%	50.0%	0.0%	0.0%
<b>Created new waitlists</b>	55.6%	66.7%	66.7%	66.7%	22.2%
<b>Eliminated waiting lists</b>	0.0%	0.0%	0.0%	0.0%	0.0%
<b>Cut services</b>	80.0%	100.0%	100.0%	100.0%	60.0%
<b>Reduced the number of locations where the program is provided</b>	33.3%	100.0%	66.7%	0.0%	0.0%
<b>Closed the program</b>	50.0%	50.0%	0.0%	0.0%	0.0%

The overall impact of the spending reductions and resulting cuts is worsened by the ongoing growth in demand for services. Since reductions became effective, a number of states have reported increased service requests across a wide range of programs. Home delivered meals represented an area of significant demand, with over half of states reporting an increase in service requests.

## Increases in Service Requests since BCA Cuts Began on March 1, 2013



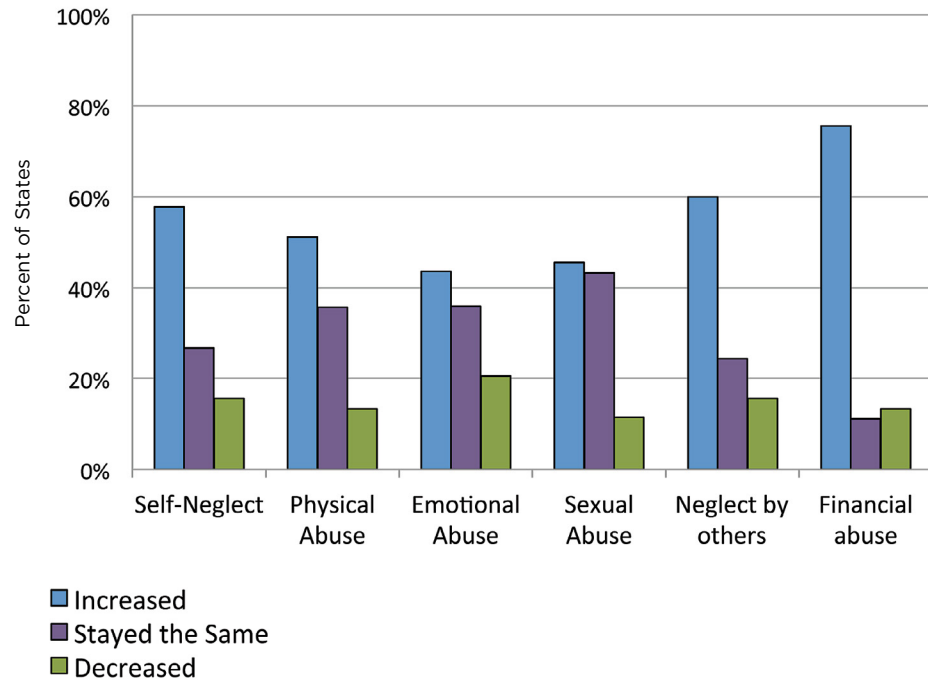
## Adult Protective Services are Under Pressure.

Adult Protective Services (APS) are one of the most important services provided by state aging and disability agencies. These services are established to ensure that reports of abuse, neglect, and exploitation are investigated and that individuals are protected. However, no federal agency is responsible for oversight of the APS program and there is no federal funding source for APS services.

Although the Elder Justice Act, passed as an amendment to the Affordable Care Act (ACA) in 2010, created a framework for federal oversight and funding of APS, the ACA did not authorize any federal funds for the Act. President Obama's proposed budget for FY2015 included \$25 million to fund a portion of the Elder Justice Act. However, the funds are contingent upon legislation in Congress. The Senate included a lesser amount, \$10 million, in their initial spending proposal; at this time, no proposal has come from the House of Representatives.

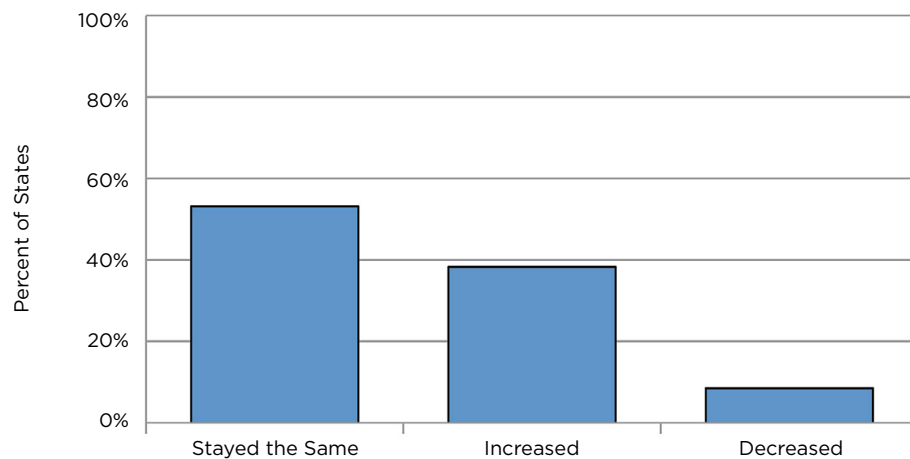
Stagnant funding and increases in service demands are placing significant strain on APS programming. States are reporting increases in nearly every category of elder abuse, particularly financial abuse. Over three-quarters of the states reported an increase in reported cases of financial abuse.

*Statewide Change in Number of APS Reports by Category (Since 2012)*

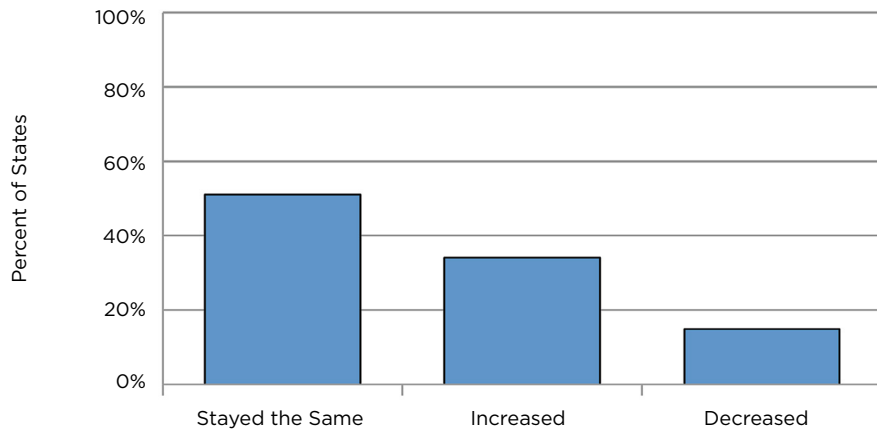


However, despite the increase in demand for services, APS funding and staffing levels have remained stagnant or decreased in nearly 60 percent of the states.

*Statewide Change in APS Program Budget Levels (Since 2012)*



### Statewide Change in APS Program Staffing Levels (Since 2012)



This increasing caseload, coupled with decreasing funding, is placing enormous pressure on state agencies as well as the individuals they serve and further demonstrates the need for a sustainable federal APS funding stream. The Elder Justice Act represents a significant opportunity to improve the delivery and coordination of APS services nationwide.

# UPDATE ON STATE HCBS AUTHORITY ADOPTION

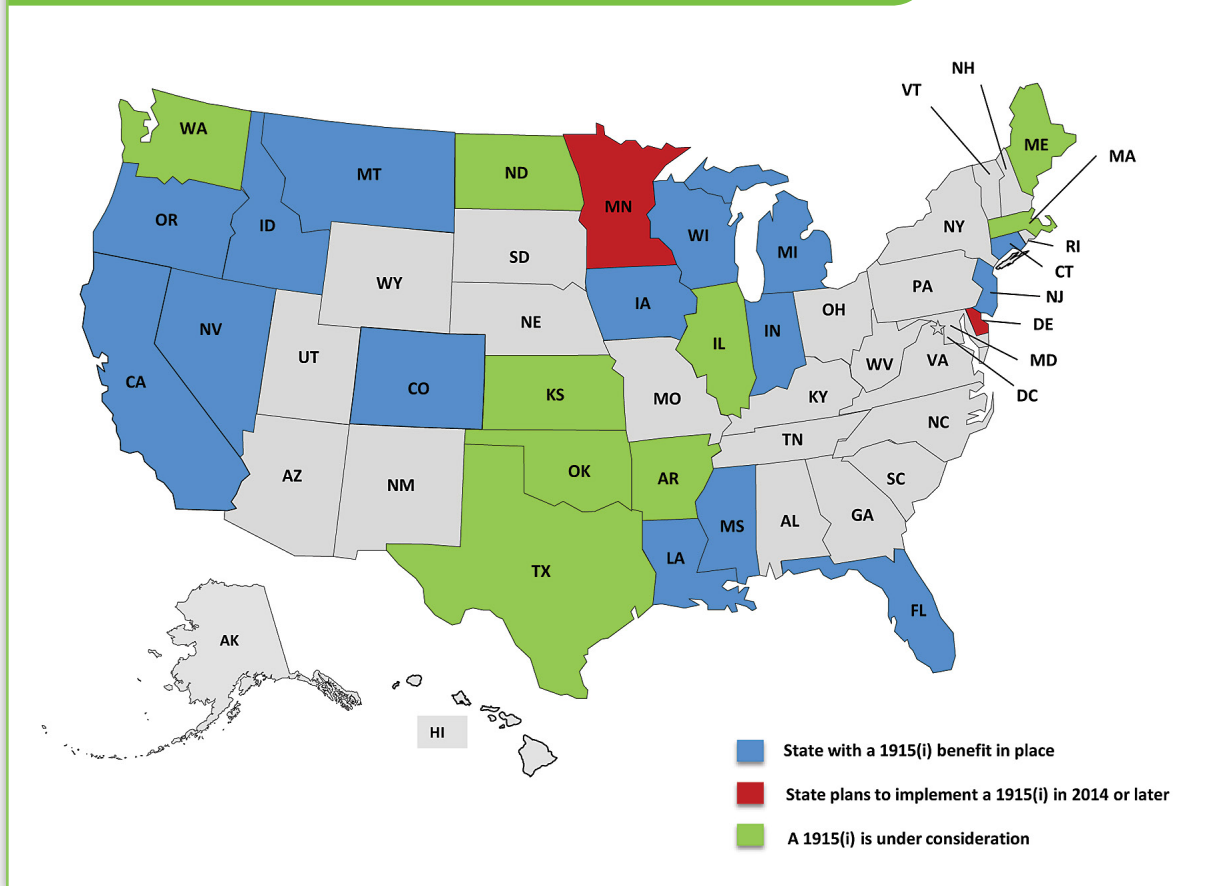
The Affordable Care Act (ACA) created or modified several options to provide Medicaid HCBS services. Two of these options are the §1915(i) and §1915(k) HCBS options. Since the ACA passed, states have been gradually adopting the different benefit packages. In the 2014 survey, 15 states reported having a §1915(i) in place and 11 additional states reported that they were planning to implement the benefit or that the benefit was under consideration. Only three states reported having a §1915(k) in place; however, five additional states reported plans to implement the program and seven more indicated that it was under consideration.

## §1915(i)

The §1915(i) benefit was originally created in 2006 as part of the Deficit Reduction Act and was subsequently modified by the ACA. This benefit allows states to provide comprehensive LTSS to individuals who do not meet the state's institutional level of care criteria and who are, therefore, ineligible for other LTSS programs such as §1915(c) waivers. Under §1915(i), states may provide the same services as are available through §1915(c) waivers. States are allowed to target the benefit to specific populations, such as people with physical disabilities or individuals with intellectual and developmental disabilities. States may not impose enrollment caps or establish waiting lists, but are required to limit the benefit to individuals with income below 150 percent FPL, or 300 percent of the SSI federal benefit rate, if the individual is eligible for an existing HCBS waiver in the state. These requirements have created some uncertainty about state participation, as states have less flexibility to implement the types of cost-control options available under other HCBS options, and the income criteria is more restrictive and complex to administer than §1915(c) waivers.



## Status of State 1915(i) HCBS Benefit Packages



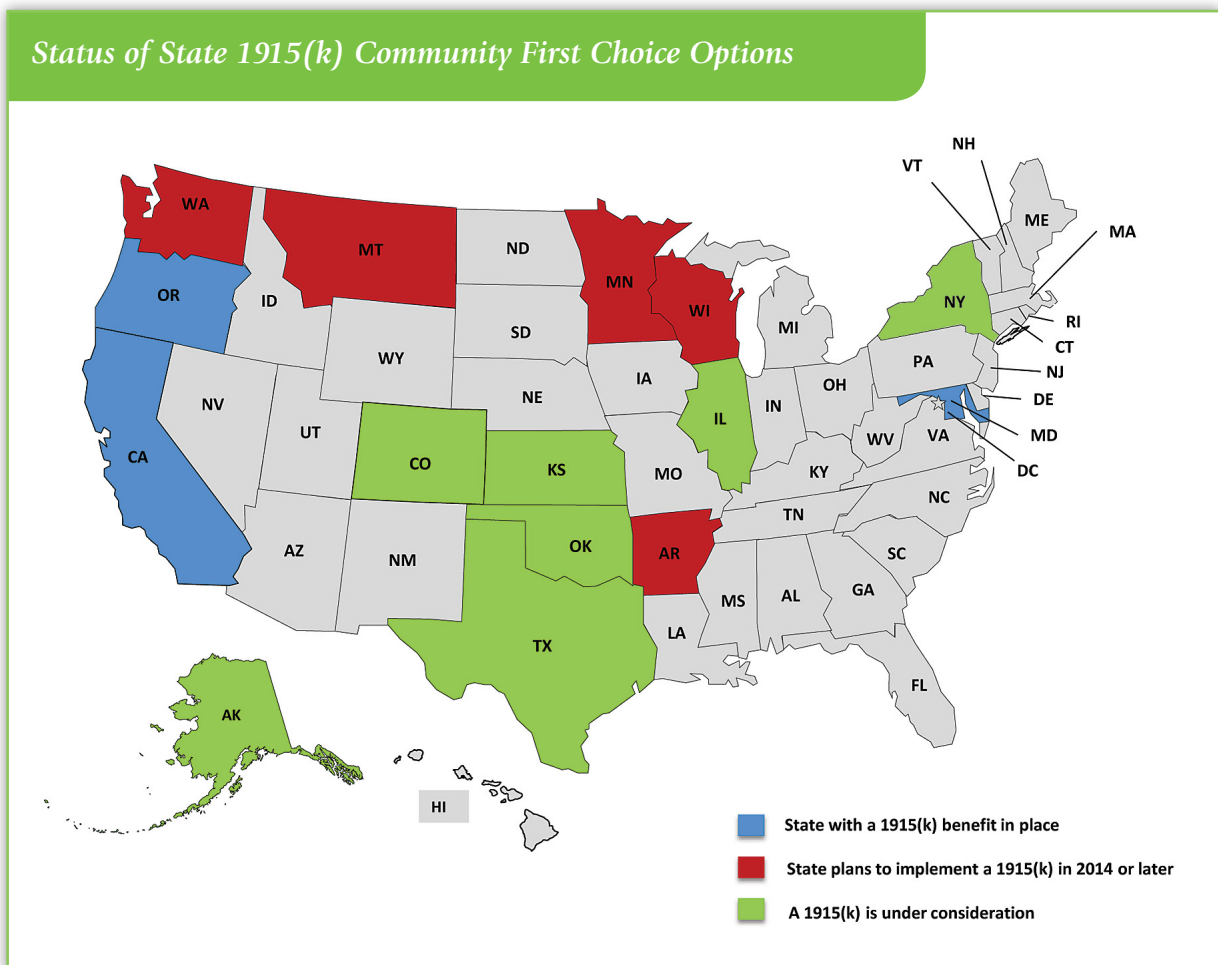
The benefit allows states to expand services to populations that previously struggled to receive HCBS services, such as individuals with behavioral health conditions. Despite some drawbacks with the option, state adoption of the §1915(i) program continues to grow. In the 2012 survey, six states reported that they had received CMS approval and were offering these state plan benefits. In the 2014 survey, the number of states reporting participation in the §1915(i) program more than doubled to 15 and several other states indicated that they were considering implementing adopting the benefit.

### §1915(k)

The Affordable Care Act created section §1915(k) of the Social Security Act, a benefit commonly known as the “Community First Choice” (CFC) option. Under CFC, states have the option to provide certain types of LTSS through the Medicaid state-plan. CFC differs from

other LTSS options as the available benefits are more limited than those available through §1915(c) waivers and §1915(i) benefits. Additionally, CFC participants must meet the state’s institutional level of care criteria and be included in a Medicaid eligibility category in order to access the services. States may not limit the number of people who receive services or establish waiting lists and they may not target specific populations to receive the benefit. States that adopt the option receive a 6 percent increase in the federal share of Medicaid expenditures (FMAP) for services provided through CFC, but must maintain the same level of state expenditures on LTSS for at least a year after implementing the program. CFC became effective on October 1, 2011.

Despite the increased share of federal expenditures, only three states were operating a CFC program as of September 2014. Five additional states reported intent to implement CFC in the near future, while seven additional states indicated that establishment of a CFC program was under consideration.



## CONCLUSION

The 2014 survey reinforced findings of prior surveys, and demonstrates the ongoing challenges that states face across the country as well as the innovation occurring at state and local levels. States are currently struggling with limited budgets that are under additional pressure from federal spending cuts at a time where employee retirement and turnover is draining the government workforce of its longest tenured employees. Yet, despite these challenges, states are reorganizing agencies to better serve their constituents and are implementing reforms to improve the coordination and integration of long-term services and supports.

As states continue to struggle with sluggish revenue growth, they are engaging in a variety of efforts to reorganize and reform their service delivery systems. As this survey demonstrates, the majority of states are transforming their Medicaid, LTSS, and aging and disability agencies. These changes include agency reorganizations, care-coordination initiatives, and adoption of new programs such as §1915(i) or §1915(k) benefits.

A variety of factors are driving innovation and transformation at the state level, including:

- Adoption and implementation of ACA options and mandates;
- Increased emphasis on coordination and care management;
- Federal and state spending cuts; and
- Increasing demand for services.

All of these factors are likely to continue and to drive further changes in state programs and administrations. In the face of these challenges and opportunities, NASUAD and its membership will continue to support the advancement of state systems innovation and the development of national policies that support home and community-based services for older adults and individuals with disabilities.





## STATE-BY-STATE SUMMARY TABLES

**Table 1: Structure of State Agencies**

	Stand-Alone Agency	Part of an Umbrella Agency				Independent Board or Commission	Other
		Combined Health and Human Services	Human Services Only	Health Only	Medicaid		
<b>Alabama</b>	A/APS/BH/ID					PD/TBI	
<b>Alaska</b>		A/APS/BH/ID/PD/SHIP/TBI					LTCO located in Dept. of Revenue
<b>Arizona</b>			A/APS/ID/LTCO/PD/SHIP/TBI	BH/PD/TBI	PD/TBI		
<b>Arkansas</b>	SHIP		A/APS/BH/ID/PD/LTCO				No TBI program
<b>California</b>	A				BH		A & SHIP & LTCO located in Dept. of Aging; PD located in multiple depts.; TBI located in Dept. of Rehab.; ID located in Dept. of Developmental Services; APS located in Dept. of Social Services.
<b>Colorado</b>			A/APS/BH/LTCO/PD/TBI	LTCO	A/BH/ID/PD/TBI		SHIP located in Div. of Insurance.
<b>Connecticut</b>	A/BH/ID/PD/SHIP/LTCO		APS/TBI				BH located in stand-alone Dept. of Mental Health and Addiction Services; SHIP & LTCO located in stand-alone Aging Agency.
<b>Delaware</b>		A/APS/BH/ID/LTCO/PD/TBI					SHIP located in office of Insurance Commissioner.
<b>District of Columbia</b>		A/APS/BH/ID/PD			LTCO/SHIP		
<b>Florida</b>	A/APS/BH/ID/LTCO/PD/SHIP/TBI						
<b>Georgia</b>	BH/ID	APS/LTCO/SHIP	A/PD		PD/TBI		
<b>Hawaii</b>		A/PD	APS	BH/ID/LTCO/SHIP/TBI			
<b>Idaho</b>		ID/PD/TBI			BH/ID/TBI	A/APS/ID/LTCO/SHIP	
<b>Illinois</b>	A/PD		BH/ID/TBI		A/PD		APS & SHIP & LTCO located in Dept. on Aging.
<b>Indiana</b>			A/APS/BH/ID/LTCO/PD/TBI		SHIP		
<b>Iowa</b>	A/LTCO		APS/BH/ID	TBI			PD is located in Dept of Public Health, Iowa Vocational Rehab. Services, & Dept. for the Blind; SHIP is located in Insurance Division.
<b>Kansas (Medicaid)</b>	LTCO		A/APS/BH/ID/SHIP/PD/TBI				
<b>Kansas (Aging/Disab)</b>		A/APS/BH/ID/LTCO/PD/SHIP/TBI					APS & SHIP & LTCO are a shared responsibility for 3 state agencies; A & PD & TBI are a shared responsibility for 3 state agencies and private managed care organizations; ID is a shared responsibility for 3 state agencies and private community developmental disability organizations; BH is a shared responsibility for 3 state agencies and private community mental health organizations.
<b>Kentucky</b>		A/APS/BH/ID/LTCO/PD/SHIP/TBI					

A = Aging • APS = Adult Protective Services • BH = Behavioral Health • ID = Intellectual & Developmental Disabilities • LTCO = Long-Term Care Ombudsman • PD = Physical Disabilities  
SHIP = State Health Insurance Assistance • Program • TBI = Traumatic Brain Injuries

**Table 1: Structure of State Agencies (Continued)**

	Stand-Alone Agency	Part of an Umbrella Agency			Independent Board or Commission	Other
		Combined Health and Human Services	Human Services Only	Health Only		
Louisiana	A/LTCO/SHIP			APS/BH/ID/ PD/TBI		
Maine		A/APS/ID/ LTCO/PD/ SHIP/TBI				
Maryland	A/PD		APS	BH/ID/TBI		SHIP & LTCO located in the Dept. of Aging.
Massachusetts		A/BH/ID/PD				TBI located in MRC and DDS; APS & SHIP & LTCO located in Executive Office of Elder Affairs.
Michigan	A/LTCO/SHIP		APS/PD	BH/ID/TBI		SHIP & LTCO are part of OSA.
Minnesota			A/APS/BH/ ID/PD/SHIP/ LTCO/TBI			
Mississippi	BH/ID/PD		A/APS/LTCO/ SHIP		TBI	
Missouri		A/APS/LTCO/ PD/TBI				ID & BH located in Dept. of Mental Health; SHIP located in Dept. of Insurance.
Montana		A/APS/BH/ ID/LTCO/PD/ SHIP/TBI				
Nebraska		A/APS/BH/ID/ LTCO/PD			A/LTCO	TBI located in Dept. of Ed.; SHIP located in Dept. of Insur.
Nevada		BH/TBI	A/APS/ID/ LTCO/PD/ SHIP		PD	
New Hampshire	PD	A/APS/BH/ID/ LTCO/SHIP/ TBI				PD located in Office of Vocational Rehabilitation.
New Jersey			A/APS/BH/ID/ PD/SHIP/TBI			LTCO in but not of Dept. of Treasury.
New Mexico	A/PD				PD	TBI & ID & BH located in multiple agencies; APS & SHIP & LTCO located in Aging and Long-Term Services Department.
New York	A/APS/BH/ID/ LTCO/SHIP				PD/TBI	A & SHIP & LTCO located in NYSOFA; APS located in Office of Children & Families; PD & TBI located in Health Dept.; ID located in Office of Persons with DD; BH located in Office of Mental Health & Office of Alcohol and Substance Abuse Services.
North Carolina	SHIP	A/APS/ID/ LTCO/PD/TBI				TBI & ID located in Division of Mental Health/DD/SAS; SHIP located in Dept. of Insurance.
North Dakota			A/APS/BH/ID/ LTCO/PD/TBI			SHIP located in Insurance Dept.
Ohio	A/BH/ID		APS		PD/TBI	PD & TBI are located in multiple agencies: Department of Medicaid (DOM), Department of Aging (ODA) and Opportunities for Ohioans with Disabilities (OOD); APS is located in Department of Jobs and Family Services (JFS); SHIP is located in ODI; LTCO is located in ODA.

A = Aging • APS = Adult Protective Services • BH = Behavioral Health • ID = Intellectual & Developmental Disabilities • LTCO = Long-Term Care Ombudsman • PD = Physical Disabilities  
SHIP = State Health Insurance Assistance • Program • TBI = Traumatic Brain Injuries

**Table 1: Structure of State Agencies (Continued)**

	Stand-Alone Agency	Part of an Umbrella Agency			Independent Board or Commission	Other
		Combined Health and Human Services	Human Services Only	Health Only		
<b>Oklahoma</b>			A/APS/ID/LTCO	TBI		TBI located in Dept. of Health; BH located in 3 agencies (Mental Health, Human Services, Medicaid); SHIP located in Insur. Dept.; PD is represented by five Councils for Independent Living.
<b>Oregon</b>	LTCO		A/APS/ID/PD/TBI	BH/SHIP		
<b>Pennsylvania</b>	A/APS/LTCO/SHIP				BH/ID/PD/TBI	
<b>Rhode Island</b>		APS/BH/ID/PD/TBI	A/LTCO/SHIP			
<b>South Carolina</b>	BH/ID/PD		APS/TBI			A & SHIP & LTCO located in Lt. Gov. office.
<b>South Dakota</b>			ID/TBI			A & PD & BH & APS & SHIP & LTCO located in Dept. Social Services.
<b>Tennessee</b>	BH/ID		APS	TBI	A/LTCO/SHIP	PD located in Health, Human Services, and Aging & Disability agencies; SHIP & LTCO located in Unit on Aging.
<b>Texas</b>		A/APS/BH/ID/LTCO/PD/SHIP/TBI				
<b>Utah</b>			A/APS/BH/ID/LTCO/PD/SHIP/TBI			
<b>Vermont</b>		A/APS/BH/ID/LTCO/PD/SHIP/TBI				
<b>Virginia</b>			A/APS/BH/ID/LTCO/PD/SHIP/TBI			A & PD & TBI & LTCO & APS & SHIP are located in the Dept. of Aging and Rehabilitative Services; ID & BH are located in the Dept. of Behavioral Health and Developmental Services.
<b>Washington</b>			A/APS/BH/ID/PD/TBI		A/BH/ID/PD/TBI	A & PD & TBI & APS are located in DSHS/AL TSA; ID is located in DSHS/Developmental Disabilities Administration; BH is located in DSHS/Behavior Health & Service Integration Admin.; SHIP is located in the Office of the Insur. Commiss.; LTCO is located in the Dept. of Commerce.
<b>West Virginia</b>	A/LTCO/SHIP	APS/BH				PD & TBI & ID are located in Med within DHHR.
<b>Wisconsin</b>	LTCO/SHIP	A/APS/BH/ID/PD/TBI			TBI	
<b>Wyoming</b>	APS/SHIP			A/BH/ID/LTCO/PD/TBI		A & PD & LTCO are located in the Aging Division, Community Living Section; TBI & ID & BH are located in Beh. Health Division; APS is located in the Dept. of Family Services; SHIP is located in the Dept. of Insurance.

A = Aging • APS = Adult Protective Services • BH = Behavioral Health • ID = Intellectual & Developmental Disabilities • LTCO = Long-Term Care Ombudsman • PD = Physical Disabilities  
SHIP = State Health Insurance Assistance • Program • TBI = Traumatic Brain Injuries



**Table 2: State Reporting Structures**

	Agency Director Reports To						Other
	Director is the Head of the Agency	Health AND Human Services Commissioner	Human Services Only Commissioner	Health Only Commissioner	Medicaid Commissioner	Board or Commission	
<b>Alabama</b>	A/APS/BH/ID/LTCO/SHIP						
<b>Alaska</b>		A/APS/BH/ID/PD/SHIP/TBI					LTCO reports to Dept. of Revenue
<b>Arizona</b>			APS/ID/LTCO/PD/SHIP/TBI	BH/PD/TBI	PD/TBI		
<b>Arkansas</b>			A/APS/BH/ID/LTCO/PD				No TBI Program; SHIP reports to Insurance Commission
<b>California</b>	A/ID/LTCO/SHIP		APS		BH		PD reports to multiple depts.
<b>Colorado</b>	A/APS/BH/ID/LTCO/PD/SHIP/TBI						LTCO reports to the contracted entity.
<b>Connecticut</b>	A/BH/ID/PD		APS/TBI				A & SHIP & LTCO report to Commissioner on Aging.
<b>Delaware</b>		A/BH/ID/PD/TBI					SHIP reports to Insur. Commissioner; APS & LTCO report to DHSS Constituent Services Director who reports to the Health and Social Services Secretary.
<b>District of Columbia</b>	A						
<b>Florida</b>	A						
<b>Georgia</b>	BH/ID/LTCO		APS/LTCO/SHIP		PD/TBI		
<b>Hawaii</b>	LTCO/SHIP		APS	BH/ID/PD/TBI			A reports to the Governor.
<b>Idaho</b>	A/APS/LTCO/SHIP/TBI	ID/PD			BH/ID/PD/TBI	ID	
<b>Illinois</b>	A/APS/LTCO/PD/SHIP		BH/ID/TBI		A/PD		SHIP reports to Dept. on Aging Deputy Director; APS & LTCO report to Dept. on Aging Div. of Home and Community Service.
<b>Indiana</b>	A/BH/ID	A/BH/ID					PD & TBI & SHIP don't have a single Director to report to; APS & LTCO report to Division of Aging.
<b>Iowa</b>	A		APS/BH/ID	TBI		LTCO	SHIP reports to Insurance Division.
<b>Kansas (Medicaid)</b>	LTCO		A/APS/BH/ID/PD/SHIP/TBI				
<b>Kansas (Aging/Disab)</b>		A/APS/BH/ID/PD/LTCO/SHIP/TBI					
<b>Kentucky</b>	A/APS/BH/ID/LTCO/PD/SHIP/TBI		APS				
<b>Louisiana</b>	A/LTCO/SHIP		APS/BH/ID/PD/TBI				
<b>Maine</b>	LTCO/SHIP	A/APS/ID/PD/TBI					
<b>Maryland</b>	A/PD		APS	BH/ID/TBI			SHIP & LTCO report to Dept. of Aging.
<b>Massachusetts</b>		A/BH/ID/PD/TBI					APS & SHIP & LTCO report to Executive Office of Elder Affairs.

A = Aging • APS = Adult Protective Services • BH = Behavioral Health • ID = Intellectual & Developmental Disabilities • LTCO = Long-Term Care Ombudsman • PD = Physical Disabilities  
SHIP = State Health Insurance Assistance • Program • TBI = Traumatic Brain Injuries

**Table 2: State Reporting Structures (Continued)**

	Agency Director Reports To						Other
	Director is the Head of the Agency	Health AND Human Services Commissioner	Human Services Only Commissioner	Health Only Commissioner	Medicaid Commissioner	Board or Commission	
<b>Michigan</b>	A/LCTO/SHIP		APS	BH/ID/PD/TBI			SHIP & LTCO report to OSA.
<b>Minnesota</b>			A/APS/BH/ID/PD/TBI			A/LTCO/SHIP	
<b>Mississippi</b>	BH/ID		APS/LTCO/SHIP			PD/TBI	
<b>Missouri</b>	A/APS/BH/ID/LTCO/PD/SHIP/TBI						
<b>Montana</b>	A/APS/BH/ID/LTCO/PD/SHIP/TBI						
<b>Nebraska</b>	SHIP/TBI						ID & PD & BH & APS report to DHHS Director; A & LTCO report to Director of Medicaid & Long Term Care in DHHS.
<b>Nevada</b>	A/APS/BH/ID/LTCO/PD/SHIP/TBI	A/BH/ID/PD					
<b>New Hampshire</b>		A/APS/BH/ID/PD/LTCO/SHIP/TBI					PD reports to Commissioner of Education.
<b>New Jersey</b>			APS/BH/ID/PD/SHIP/TBI				LTCO
<b>New Mexico</b>	A						APS reports to Cabinet Secretary, Aging and Long-Term Services Dept.; SHIP & LTCO report to Consumer and Elder Rights Div. Director, Aging and Long-Term Services Dept.
<b>New York</b>	A				PD		SHIP & LTCO report to Aging Director; APS reports to OCFS Commissioner; TBI joint report to Health Comm. and Medicaid Director; ID reports to OPWDD Commissioner; BH reports to Mental Health Comm. & Alcohol and Substance Abuse Comm.
<b>North Carolina</b>	APS/BH/ID/LTCO/TBI		PD			SHIP	SHIP reports to Comm. of Insurance.
<b>North Dakota</b>							A & TBI & ID & BH report to MH and SA; APS & LTCO report to Aging Services Div.; SHIP reports to Insur. Dept.; PD reports to Medical Services.
<b>Ohio</b>	A/BH/ID		APS		PD/TBI	PD/TBI	PD & TBI report to multiple agencies: DOM ODA, OOD; LTCO reports to Director of ODA; APS reports to JFS; SHIP reports to Dept. of Insur.
<b>Oklahoma</b>			APS/ID/LTCO	TBI			PD reports to the respective boards of the five CILs; SHIP reports to Insur. Dept.; BH reports to Mental Health, Human Services and Medicaid.
<b>Oregon</b>	LTCO		APS/ID/PD/TBI	BH/SHIP			
<b>Pennsylvania</b>	A/APS/LTCO/SHIP						

A = Aging • APS = Adult Protective Services • BH = Behavioral Health • ID = Intellectual & Developmental Disabilities • LTCO = Long-Term Care Ombudsman • PD = Physical Disabilities  
SHIP = State Health Insurance Assistance • Program • TBI = Traumatic Brain Injuries

**Table 2: State Reporting Structures (Continued)**

	Agency Director Reports To						Other
	Director is the Head of the Agency	Health AND Human Services Commissioner	Human Services Only Commissioner	Health Only Commissioner	Medicaid Commissioner	Board or Commission	
<b>Rhode Island</b>	BH/ID/PD/TBI		APS/LTCO/SHIP				
<b>South Carolina</b>	BH/ID					PD/TBI	A reports to Lt. Gov.; LTCO reports to Aging Director.
<b>South Dakota</b>							All report to Dept. of Social Services.
<b>Tennessee</b>	BH/ID		APS	TBI		A/LTCO/SHIP	SHIP & LTCO report to Unit on Aging; A reports to governor.
<b>Texas</b>		A/APS/BH/ID/PD/LTCO/SHIP/TBI					
<b>Utah</b>			A/BH/ID/PD				
<b>Vermont</b>			A/ID/PD/TBI				
<b>Virginia</b>	A/APS/BH/ID/LTCO/PD/SHIP/TBI						A & PD & TBI & LTCO & APS & SHIP report to the Dept. of Aging and Rehabilitative Services; ID & BH report to the Dept. of Behavioral Health and Developmental Services.
<b>Washington</b>	LTCO/SHIP	A/BH/ID/PD/TBI	APS				APS reports to ALTSA; SHIP reports to the Insur. Commiss.; LTCO reports to Dept. of Commerce.
<b>West Virginia</b>	A	APS/BH/ID/PD/TBI					SHIP reports to the Comm. on Aging.
<b>Wisconsin</b>		A/APS/BH/ID/PD/SHIP/TBI				LTCO	
<b>Wyoming</b>	A/APS/BH/ID/LTCO/PD/SHIP/TBI					LTCO	A & PD & LTCO report to the Aging Division, Community Living Section; TBI & ID & BH report to the Beh. Health Division; APS reports to the Dept. of Family Services; SHIP reports to the Dept. of Insurance.

A = Aging • APS = Adult Protective Services • BH = Behavioral Health • ID = Intellectual & Developmental Disabilities • LTCO = Long-Term Care Ombudsman • PD = Physical Disabilities  
 SHIP = State Health Insurance Assistance • Program • TBI = Traumatic Brain Injuries

Table 3: Components of LTSS for Which State Agency is Responsible

	Planning and Policy Development	Financing	Regulation of Nursing Facility Services	Licensure and Certification of Nursing Facilities Services and Staff	Quality Assurance of Nursing Facility Services	Regulation of Assisted Living	Licensure and Certification of Assisted Living Services and Staff	Quality Assurance of Assisted Living Services
Alabama								
Alaska	✓	✓				✓		✓
Arizona	✓	✓			✓			✓
Arkansas	✓	✓						
California	✓							
Colorado	✓	✓						
Connecticut	✓	✓						
Delaware	✓	✓						
District of Columbia								
Florida	✓	✓						✓
Georgia	✓	✓						✓
Hawaii	✓	✓						
Idaho	✓	✓			✓			✓
Illinois	✓	✓						
Indiana	✓	✓						
Iowa	✓	✓						
Kansas (Medicaid)	✓	✓	✓	✓	✓	✓	✓	✓
Kansas (Aging/Disab)	✓	✓	✓	✓	✓	✓	✓	✓
Kentucky	✓	✓				✓	✓	✓
Louisiana	✓							
Maine	✓	✓			✓			✓
Maryland	✓	✓						
Massachusetts	✓				✓	✓	✓	✓
Michigan	✓	✓						
Minnesota	✓		✓		✓			✓
Mississippi	✓	✓						
Missouri	✓	✓						
Montana	✓	✓	✓	✓	✓	✓	✓	✓
Nebraska		✓						
Nevada	✓							
New Hampshire	✓	✓						
New Jersey	✓							
New Mexico								
New York	✓	✓						
North Carolina	✓	✓						
North Dakota								
Ohio	✓	✓						
Oklahoma	✓	✓			✓			✓
Oregon	✓	✓	✓	✓		✓	✓	
Pennsylvania								

Regulation of Home and Community Based Providers	Licensure and Certification of Home and Community Based Providers and Staff	Quality Assurance of Home and Community Based Service	Financial Eligibility Determination	Functional/ Medical Eligibility Determination	Intellectual or Developmental Disabilities	Mental Health	Other
		✓		✓			Medicaid provider for all elderly and disabled waiver slots and AIDs/ HIV waiver; state staff serve on various LTC committees for Medicaid and other agencies such as the Dementia Task Force under the Department of Mental Health.
✓		✓		✓	✓		Medicaid HCBS provider certification.
		✓					
	✓						DAAS is responsible for certification of Home and Community Based Providers but not licensure.
✓	✓	✓					Certification & regulation activities performed via interagency agreement with the Medicaid Agency.
		✓					
							We are a partner in planning and policy development but do not have sole or ultimate responsibility.
			✓	✓			
			✓				
		✓		✓			
		✓		✓			Financing refers to distribution of funding to AAAs.
		✓		✓			Program development for programs such as the Veterans Directed HCBS and consumer directed support.
✓	✓	✓	✓	✓			
✓	✓	✓					
✓	✓	✓		✓	✓	✓	
✓	✓	✓		✓	✓	✓	
				✓			
		✓		✓	✓		
			✓	✓			
✓	✓	✓	✓	✓			
✓		✓		✓	✓		
		✓		✓	✓		
		✓		✓	✓		
✓		✓		✓			Will change somewhat with July 1, 2014 implementation of MLTSS.
							ADRC provides options counseling, information, and transitional services for Medicaid and non-Medicaid recipients.
	✓	✓					Licensure of Adult Day Services only.
							Older Americans Act programs and services; SCSEP; adult abuse: guardianship petitioning; adult family foster care licensure.
✓	✓	✓		✓			LTC Consumer Guide and Ombudsman Program.
		✓		✓		✓	
✓	✓		✓	✓	✓		
	✓			✓			

**Table 3: Components of LTSS for Which State Agency is Responsible (Continued)**

	<i>Planning and Policy Development</i>	<i>Financing</i>	<i>Regulation of Nursing Facility Services</i>	<i>Licensure and Certification of Nursing Facilities Services and Staff</i>	<i>Quality Assurance of Nursing Facility Services</i>	<i>Regulation of Assisted Living</i>	<i>Licensure and Certification of Assisted Living Services and Staff</i>	<i>Quality Assurance of Assisted Living Services</i>	
Rhode Island	✓	✓						✓	
South Carolina	✓								
South Dakota	✓							✓	
Tennessee	✓	✓							
Texas	✓	✓	✓	✓	✓	✓	✓	✓	
Utah									
Vermont	✓	✓	✓	✓	✓	✓	✓	✓	
Virginia									
Washington	✓	✓	✓	✓	✓	✓	✓	✓	
West Virginia									
Wisconsin	✓	✓	✓		✓	✓		✓	
Wyoming	✓								

	Regulation of Home and Community Based Providers	Licensure and Certification of Home and Community Based Providers and Staff	Quality Assurance of Home and Community Based Service	Financial Eligibility Determination	Functional/ Medical Eligibility Determination	Intellectual or Developmental Disabilities	Mental Health	Other
			✓	✓	✓			
								LTC Ombudsman.
					✓			
			✓					
					✓	✓		
								LTC Ombudsman
	✓	✓	✓		✓	✓		LTCO for facilities and CFC HCBS
								Policy development for older citizens and people with physical disabilities.
	✓	✓	✓	✓	✓			
		✓	✓					
	✓		✓	✓	✓		✓	

**Table 4: Populations Served by State Aging and Disability Agencies**

	<i>Older Adults</i>	<i>Individuals with Physical Disabilities</i>	<i>Individuals with Intellectual/Developmental Disabilities</i>	<i>Individuals with Traumatic Brain Injury</i>	<i>Individuals accessing mental/behavioral health services</i>	<i>Other</i>
Alabama	✓	✓				Options and benefits counseling to anyone, including all of the above mentioned with a mental, cognitive, or physical disability coming through the ADRC. Disabilities are served through the E&D Medicaid Waiver and Lifespan Respite Services. The appointing social service agencies for disability or mental/behavioral health services are the Department of Rehabilitation and the Department of Mental Health Services.
Alaska	✓	✓	✓	✓		Children with complex medical conditions.
Arizona	✓	✓				
Arkansas	✓	✓				
California	✓	✓	✓		✓	Participants in adult day health care include younger adults with disabilities, including persons with DD and/or behavioral health issues.
Colorado	✓					Vulnerable adults and caregivers.
Connecticut	✓					
Delaware	✓	✓		✓		
District of Columbia	✓	✓	✓	✓		
Florida	✓	✓	✓	✓	✓	
Georgia	✓	✓				Individuals with both DD & physical disabilities through ADRC.
Hawaii	✓	✓				
Idaho	✓	✓				
Illinois	✓					
Indiana	✓	✓		✓		Nursing Home applicants; residential care residents.
Iowa	✓	✓	✓	✓	✓	
Kansas	✓	✓	✓	✓	✓	Gambling addictions; substance use disorders.
Kentucky	✓	✓		✓	✓	
Louisiana	✓					
Maine	✓	✓	✓	✓		
Maryland	✓	✓	✓	✓	✓	Veterans.
Massachusetts	✓					Individuals with physical disabilities age 60–64.
Michigan	✓	✓		✓	✓	
Minnesota	✓	✓	✓	✓		
Mississippi	✓					
Missouri	✓	✓				
Montana	✓	✓	✓	✓	✓	
Nebraska	✓					
Nevada	✓	✓	✓	✓		



Table 4: Populations Served by State Aging and Disability Agencies (Continued)

	Older Adults	Individuals with Physical Disabilities	Individuals with Intellectual/Developmental Disabilities	Individuals with Traumatic Brain Injury	Individuals accessing mental/behavioral health services	Other
New Hampshire	✓	✓				
New Jersey	✓	✓				
New Mexico	✓	✓	✓	✓	✓	
New York	✓					Caregivers and some younger disabled through ADRC.
North Carolina	✓					Vulnerable adults 18+.
North Dakota	✓	✓				
Ohio	✓	✓				*ODA does not have a specific program/waiver/funding source for individuals with TBI or other targeted populations; however, they may be receiving services through ODA.
Oklahoma	✓	✓		✓	✓	
Oregon	✓	✓	✓	✓		
Pennsylvania	✓	✓				
Rhode Island	✓	✓				
South Carolina	✓	✓	✓			
South Dakota	✓	✓				
Tennessee	✓	✓				
Texas	✓	✓	✓			
Utah	✓					
Vermont	✓	✓	✓	✓		
Virginia	✓	✓		✓		
Washington	✓	✓		✓		
West Virginia	✓	✓				
Wisconsin	✓	✓	✓	✓	✓	
Wyoming	✓	✓				

**Table 5: Appointment of State Agency Directors**

	Director Appointed By			
	Gubernatorial Appointment	Hired by Higher Ranking Official within the Agency / Department	Appointee of a Board or Commission	Other
Alabama	✓			
Alaska	✓			
Arizona	✓			
Arkansas		✓		
California	✓			
Colorado		✓		
Connecticut	✓			
Delaware	✓			
District of Columbia				Appointed by the Mayor.
Florida	✓			
Georgia	✓	✓		
Hawaii	✓			
Idaho	✓			
Illinois	✓			
Indiana		✓		
Iowa	✓			
Kansas (Medicaid)	✓			
Kansas (Aging/Disab)		✓		
Kentucky	✓			
Louisiana	✓			
Maine		✓		
Maryland	✓			
Massachusetts	✓			
Michigan	✓			
Minnesota	✓			
Mississippi		✓		
Missouri		✓		
Montana	✓			
Nebraska		✓		
Nevada		✓		
New Hampshire		✓		
New Jersey		✓		
New Mexico	✓			

**Table 5: Appointment of State Agency Directors (Continued)**

	Director Appointed By			
	Gubernatorial Appointment	Hired by Higher Ranking Official within the Agency / Department	Appointee of a Board or Commission	Other
New York	✓			
North Carolina	✓			
North Dakota		✓		
Ohio	✓			
Oklahoma		✓		
Oregon		✓		
Pennsylvania	✓			
Rhode Island	✓			
South Carolina				Appointed by Lt. Governor.
South Dakota		✓		
Tennessee			✓	Hired by Commission; legislation amended to have Executive Director report to the Governor.
Texas		✓		
Utah	✓			
Vermont	✓			
Virginia	✓			
Washington		✓		
West Virginia	✓			
Wisconsin	✓			
Wyoming		✓		

Table 6: Sources of Funding for State Agencies on Aging and Disabilities

	State Appropriation	Local Funding	Targeted Tax	State Lottery	Foundation/Private Grants	Older Americans Act	Medicaid	Community Services Block Grant
Alabama	✓		✓			✓	✓	
Alaska	✓					✓	✓	
Arizona	✓			✓		✓		✓
Arkansas	✓		✓			✓	✓	
California	✓					✓	✓	
Colorado	✓	✓			✓	✓	✓	
Connecticut	✓					✓		
Delaware	✓					✓	✓	
District of Columbia		✓				✓		✓
Florida	✓					✓	✓	
Georgia	✓		✓		✓	✓	✓	✓
Hawaii	✓					✓		
Idaho	✓					✓		
Illinois	✓					✓	✓	
Indiana	✓					✓	✓	
Iowa	✓					✓		
Kansas (Medicaid)	✓	✓	✓		✓	✓	✓	
Kansas (Aging/Disab)	✓		✓			✓	✓	✓
Kentucky	✓					✓	✓	
Louisiana	✓					✓		
Maine	✓					✓	✓	
Maryland	✓					✓	✓	
Massachusetts	✓					✓	✓	
Michigan	✓	✓				✓	✓	
Minnesota	✓					✓	✓	
Mississippi	✓					✓	✓	
Missouri	✓					✓	✓	
Montana	✓					✓		
Nebraska	✓	✓				✓	✓	
Nevada	✓	✓	✓			✓	✓	

Social Services Block Grant	Federal Emergency Management Agency	U.S. Department of Agriculture	U.S. Department of Education	U.S. Department of Justice	U.S. Department of Labor	U.S. Department of Transportation	Other
					✓		
✓					✓		Refugee resettlement grant funds from the Office of Refugee Resettlement; emergency shelter grant funds from HUD; Low Income Home Energy Assistance Program grant from the Office of Community Services; Assistance to Needy Families grant; State Health Insurance Assistance Grant; Senior Patrol Grant; other federal discretionary grants.
✓		✓			✓		Miscellaneous federal grants.
					✓		
		✓			✓		
✓	✓				✓		CT received 2013 Funds from FEMA due to Hurricane Sandy
✓					✓		Tobacco settlement funds.
		✓					
✓		✓			✓	✓	
							Federal grants from HHS and ACL.
		✓			✓		
					✓		
✓					✓		
✓	✓	✓	✓				
✓							
	✓						CMS grant, CDC grant, targeted fines
✓					✓		Private funds; conservatorship funds.
					✓		
		✓			✓		
		✓		✓	✓		CMS (SHIP).
✓							
✓					✓		
✓		✓	✓				
✓			✓		✓		

Table 6: Sources of Funding for State Agencies on Aging and Disabilities (Continued)

	State Appropriation	Local Funding	Targeted Tax	State Lottery	Foundation/ Private Grants	Older Americans Act	Medicaid	Community Services Block Grant
New Hampshire	✓	✓	✓			✓	✓	
New Jersey	✓	✓				✓	✓	✓
New Mexico	✓					✓	✓	
New York	✓	✓			✓	✓	✓	
North Carolina	✓					✓	✓	
North Dakota	✓		✓			✓		
Ohio	✓					✓	✓	
Oklahoma	✓				✓	✓	✓	
Oregon	✓	✓	✓			✓	✓	
Pennsylvania				✓		✓	✓	
Rhode Island	✓					✓	✓	
South Carolina	✓		✓			✓		
South Dakota	✓					✓	✓	
Tennessee	✓					✓		
Texas	✓					✓	✓	✓
Utah	✓					✓		
Vermont	✓					✓	✓	
Virginia	✓				✓	✓	✓	
Washington	✓	✓				✓	✓	
West Virginia	✓	✓		✓		✓	✓	
Wisconsin	✓					✓	✓	✓
Wyoming	✓	✓				✓		

Social Services Block Grant	Federal Emergency Management Agency	U.S. Department of Agriculture	U.S. Department of Education	U.S. Department of Justice	U.S. Department of Labor	U.S. Department of Transportation	Other
✓	✓	✓					
✓		✓					State general revenue; casino revenue.
✓							HHS/CMS.
✓		✓			✓		
✓					✓		
					✓		
		✓	✓		✓		Federal Systems Integration Grant; nursing home bed fees; consumer guide fees; general revenue funds; federal CHIPRA.
✓							
					✓		HHS.
✓				✓			
							CMS.
✓							
✓		✓			✓		
✓		✓	✓		✓		Other discretionary/competitive federal grants; CMS funding for survey and certification; other grants and competitive grants eg MFP; vocational rehabilitation; SCSEP
✓		✓			✓	✓	
		✓			✓		
✓							

Table 7: State Funded HCBS for Older Adults and Adults with Physical Disabilities

	Adult Day Health	Adult Day Social	Adult Foster Care	Assisted Living	Behavioral Supports	Case Management	Community Transition Support	Day Habilitation	Environmental Modifications	Home-Delivered Meals	Homemaker	Independent Living	Nutritional Supplements	Occupational Therapy	Personal Assistance Services	Personal Emergency Response Systems	Physical Therapy
Alabama																	
Alaska																	
Arizona																	
Arkansas																	
California																	
Colorado	A	A	N			A			A	A	B				B	B	
Connecticut	A	A	A	A	A	A	A		A	A	A				A	A	
Delaware																	
District of Columbia																	
Florida	A	B		B		B	D		B	B	B		D	B	B	B	B
Georgia	B					A			A	A	A						
Hawaii	A	A				A				A	A				A		
Idaho																	
Illinois									A								
Indiana		B				B			B	B	B		B		B	B	
Iowa																	
Kansas	A	A		A	D	A	B		B	B	B	B	B		B	B	
Kentucky						A			A	A	A		A		A	A	
Louisiana						B			B		B	B			B	B	
Maine	B	B		B		B			B	A	B			B	B	B	B
Maryland	A	A	B	A		B	A	D	A	A	B	B	A		B	A	
Massachusetts	B	B	B			B	B	B	B	B	B		B	B	B	B	B
Michigan	B		B			B	A	B	B	B	B	B			A	B	
Minnesota	A	A				A			A	A	A					A	
Mississippi																	
Missouri																	
Montana																	
Nebraska											B						
Nevada		A				B	A			A	B	B			B	A	
New Hampshire																	
New Jersey	B	B			D	B	D	D	B	B	D		D	D	B	B	D
New Mexico	B			B	D	D	B	D	B		D	D	D	B		B	B
New York																	
North Carolina	A	A				A			A	A	A	D			B		
North Dakota	B	B	B	B		B			B	B	B				B	B	

A = Aging • D = Disability • B = Both



	Recreational Therapy	Residential habilitation	Respite	Specialized Equipment, Supplies or Assistive Technology	Speech Therapy	State Pharmaceutical Assistance	Supported Employment	Supported Living	Transportation	Vocational Rehabilitation	Other
			B	A				A			
		A	A					A			
					B						
B		B	B	B	D			B			
		A						A			
								A			
								A			
		B	B					B			
		B	B			D		A	D		
				A							
			B								
		B		B							
		A	A		B	B	B	B	B		
B		B	B	B	B		B	B			
		B	B			B	B	B			
		A	A					A			
					B			A			
D	D	B	B	D	B	D	D	B	D		
	D	B	D	B		D	D	D	D		
		A	B			D		A	D		
		B						B			

A = Aging • D = Disability • B = Both

Table 7: State Funded HCBS for Older Adults and Adults with Physical Disabilities (Continued)

	Adult Day Health	Adult Day Social	Adult Foster Care	Assisted Living	Behavioral Supports	Case Management	Community Transition Support	Day Habilitation	Environmental Modifications	Home-Delivered Meals	Homemaker	Independent Living	Nutritional Supplements	Occupational Therapy	Personal Assistance Services	Personal Emergency Response Systems	Physical Therapy
Ohio	B	B		B		B	B		B	B	B	B			B	B	
Oklahoma		B		B	B	B		B	B	B	B	B	B	B	B	B	B
Oregon	A	A				A		A	A	A	A				A	A	
Pennsylvania	A	A				B	B		A	A	A			A	B	B	A
Rhode Island																	
South Carolina																	
South Dakota		B	B	B		B					B		B		B	B	
Tennessee						B				B	B		B				
Texas	*	*	*	*	*	*	*	*	*	*	*	*	*	*	*	*	*
Utah						B			B	B	B				B	B	
Vermont															B		
Virginia											B						
Washington	B	B	B		B	B	B			B			B			B	
West Virginia		A									A		A		D		
Wisconsin																	
Wyoming		B				B			B	B	B				B	B	

A = Aging • D = Disability • B = Both

	Recreational Therapy	Residential habilitation	Respite	Specialized Equipment, Supplies or Assistive Technology	Speech Therapy	State Pharmaceutical Assistance	Supported Employment	Supported Living	Transportation	Vocational Rehabilitation	Other
		B	B					B			
B		B	B	B				B	B		
		A	A					A			
		A	A	A	A			A			
		B	B								
											Limited amount of funding for a few services (homemaker, home delivered meals, and personal care).
*	*	*	*	*	*	*	*	*	*		See Footnote
			B								
											Others include Companion and Chore.
		B						B			
		A						A			
		B	B					B			

\* In Texas, the In-Home and Family Support Program is funded with state funds. The individual is given a subsidy grant for items or services that are medically necessary due to functional limitations caused by disability or disabilities. The subsidy grant covers a six month period. The maximum grant for one year is \$1,200. Many of the items listed above are allowable expenditures for the subsidy grant. However, there are not specific services that are billed to the state.

A = Aging • D = Disability • B = Both

**Table 8: Status of Medicaid LTSS Programs**

	<i>Medicaid HCBS §1915 (c) Waiver Program</i>	<i>Medicaid Managed LTSS (Regardless of Authority)</i>	<i>Medicaid §1115 Demonstration Program for LTSS Other Than Medicaid Managed LTSS</i>	<i>Medicaid State Plan Personal Care Services</i>	<i>Medicaid State Plan §1915 (i) Program</i>	<i>Medicaid State Plan §1915 (j) Program</i>	<i>Medicaid State Plan §1915 (k) Program</i>	<i>Comments</i>
<b>Alabama</b>	In Place 2013				In Place 2013			
<b>Alaska</b>	In Place 2013	Don't Have/Don't Plan to Implement	Don't Have/Don't Plan to Implement	In Place 2013	Don't Have/Don't Plan to Implement	Don't Have/Don't Plan to Implement	Under Consideration	
<b>Arizona</b>	Don't Have/Don't Plan to Implement	In Place 2013	Don't Have/Don't Plan to Implement	Don't Have/Don't Plan to Implement	Don't Have/Don't Plan to Implement	Don't Have/Don't Plan to Implement	Don't Have/Don't Plan to Implement	
<b>Arkansas</b>	In Place 2013	Don't Have/Don't Plan to Implement	Don't Have/Don't Plan to Implement	In Place 2013	Under Consideration	In Place 2013	Plan to Implement 2014	
<b>California</b>	In Place 2013	Plan to Implement 2014	Plan to Implement 2014	In Place 2013	In Place 2013			
<b>Colorado</b>	In Place 2013	Under Consideration	In Place 2013	Under Consideration	Under Consideration	Under Consideration	Under Consideration	
<b>Connecticut</b>	In place 2013		In place 2013		In place 2013			
<b>Delaware</b>	In Place 2013	In Place 2013	Don't Have/Don't Plan to Implement	In Place 2013	Plan to Implement 2014	Don't Have/Don't Plan to Implement	Don't Have/Don't Plan to Implement	DD 1915(c) waiver in place
<b>District of Columbia</b>	In Place 2013	In Place 2013	In Place 2013	In Place 2013	In Place 2013	In Place 2013	In Place 2013	
<b>Florida</b>	In Place 2013	In Place 2013	In Place 2013		In Place 2013			
<b>Georgia</b>	In Place 2013	Under Consideration	Under Consideration	Don't Have/Don't Plan to Implement	Don't Have/Don't Plan to Implement	Don't Have/Don't Plan to Implement	Don't Have/Don't Plan to Implement	1915(c) waiver program does have self directed care for personal support services which may relate to 1915(k), but not a separate waiver.
<b>Hawaii</b>	In Place 2013		In Place 2013					
<b>Idaho</b>	In Place 2013	Plan to Implement 2014			In Place 2013			Incorporating LTSS including Aging and Disability waiver services into Dual Eligible Special Needs Plan
<b>Illinois</b>	In Place 2013	In Place 2013	Under Consideration	Don't Have/Don't Plan to Implement	Under Consideration	Don't Have/Don't Plan to Implement	Under Consideration	
<b>Indiana</b>	In Place 2013	Under Consideration	Don't Have/Don't Plan to Implement	Don't Have/Don't Plan to Implement	Plan to Implement 2014	Don't Have/Don't Plan to Implement	Don't Have/Don't Plan to Implement	
<b>Iowa</b>	In Place 2013	In Place 2013	In Place 2013	Don't Have/Don't Plan to Implement	In Place 2013	Don't Have/Don't Plan to Implement	Don't Have/Don't Plan to Implement	
<b>Kansas</b>	In Place 2013	In Place 2013	In Place 2013	In Place 2013	Under Consideration	Under Consideration	Under Consideration	
<b>Kentucky</b>	In Place 2013	Don't Have/Don't Plan to Implement	In Place 2013	Don't Have/Don't Plan to Implement	Don't Have/Don't Plan to Implement	Don't Have/Don't Plan to Implement	Don't Have/Don't Plan to Implement	1115 demonstration program would the Money Follows the Person.
<b>Louisiana</b>	In Place 2013	Under Consideration	Don't Have/Don't Plan to Implement	In Place 2013	In Place 2013	Plan to Implement 2014	Don't Have/Don't Plan to Implement	1915(j) when implemented is sub-part to current state plan PCS program; 1915(i) is for behavioral health only.
<b>Maine</b>	In Place 2013	Under Consideration	Under Consideration	In Place 2013	Under Consideration	Don't Have/Don't Plan to Implement	Don't Have/Don't Plan to Implement	
<b>Maryland</b>	In Place 2013	Don't Have/Don't Plan to Implement	Don't Have/Don't Plan to Implement	In Place 2013	Don't Have/Don't Plan to Implement	Don't Have/Don't Plan to Implement	Plan to Implement 2014	

**Table 8: Status of Medicaid LTSS Programs (Continued)**

	<i>Medicaid HCBS §1915 (c) Waiver Program</i>	<i>Medicaid Managed LTSS (Regardless of Authority)</i>	<i>Medicaid §III5 Demonstration Program for LTSS Other Than Medicaid Managed LTSS</i>	<i>Medicaid State Plan Personal Care Services</i>	<i>Medicaid State Plan §1915 (i) Program</i>	<i>Medicaid State Plan §1915 (j) Program</i>	<i>Medicaid State Plan §1915 (k) Program</i>	<i>Comments</i>
<b>Massachusetts</b>	In Place 2013	In Place 2013	Don't Have/Don't Plan to Implement	In Place 2013	Under Consideration	Don't Have/Don't Plan to Implement	Don't Have/Don't Plan to Implement	
<b>Michigan</b>	In Place 2013	In Place 2013	Don't Have/Don't Plan to Implement	In Place 2013	In Place 2013 for Autism Benefit	Don't Have/Don't Plan to Implement	Don't Have/Don't Plan to Implement	
<b>Minnesota</b>	In Place 2013	In Place 2013	In Place 2013	In Place 2013	Plan to Implement 2014	Plan to Implement 2014	Plan to Implement 2014	
<b>Mississippi</b>	In Place 2013	Don't Have/Don't Plan to Implement		In Place 2013				
<b>Missouri</b>	In Place 2013	Don't Have/Don't Plan to Implement	Don't Have/Don't Plan to Implement	In Place 2013	Don't Have/Don't Plan to Implement	Don't Have/Don't Plan to Implement	Don't Have/Don't Plan to Implement	
<b>Montana</b>	In Place 2013			In Place 2013	In Place 2013		Plan to Implement 2014	
<b>Nebraska</b>	In Place 2013	Under Consideration		In Place 2013				
<b>Nevada</b>	In Place 2013	Don't Have/Don't Plan to Implement	Don't Have/Don't Plan to Implement	In Place 2013	Don't Have/Don't Plan to Implement	Don't Have/Don't Plan to Implement	Don't Have/Don't Plan to Implement	Division of Health Care Financing and Policy is responsible for the plans/consideration.
<b>New Hampshire</b>	In Place 2013	Plan to Implement 2014	Under Consideration	In Place 2013	Don't Have/Don't Plan to Implement	Don't Have/Don't Plan to Implement	Don't Have/Don't Plan to Implement	
<b>New Jersey</b>	In Place 2013	Plan to Implement 2014	Plan to Implement 2014	In Place 2013	In Place 2013	Don't Have/Don't Plan to Implement	In Place 2013	MLTSS will begin July 1, 2014.
<b>New Mexico</b>	In Place 2013	In Place 2013	Plan to Implement 2014	In Place 2013				
<b>New York</b>	In Place 2013	In Place 2013	In Place 2013	In Place 2013			Under Consideration	
<b>North Carolina</b>	In Place 2013	Under Consideration	Under Consideration	In Place 2013	Don't Have/Don't Plan to Implement	Don't Have/Don't Plan to Implement	Don't Have/Don't Plan to Implement	
<b>North Dakota</b>	In Place 2013	Don't Have/Don't Plan to Implement	Don't Have/Don't Plan to Implement	In Place 2013	Under Consideration	Don't Have/Don't Plan to Implement	Don't Have/Don't Plan to Implement	
<b>Ohio</b>	In Place 2013	Plan to Implement 2014	Don't Have/Don't Plan to Implement	Don't Have/Don't Plan to Implement	Don't Have/Don't Plan to Implement	Don't Have/Don't Plan to Implement	Don't Have/Don't Plan to Implement	Currently operating 1915(c) waiver. In 2014 plan to implement 1915 (b)&(c) waiver as Integrated Care Delivery System (ICDS)/ MyCare Ohio pilot in 7 areas of the state.
<b>Oklahoma</b>	In Place 2013	Under Consideration	Don't Have/Don't Plan to Implement	In Place 2013	Under Consideration	Under Consideration	Under Consideration	Currently only operating 1915(c) and State Plan Personal Care considering additional waiver requests.
<b>Oregon</b>	In Place 2013	Don't Have/Don't Plan to Implement	Don't Have/Don't Plan to Implement	In Place 2013	In Place 2013	In Place 2013	In Place 2013	1915(i) serves individuals with mental illness.
<b>Pennsylvania</b>	In Place 2013	Don't Have/Don't Plan to Implement	In Place 2013	Don't Have/Don't Plan to Implement	Don't Have/Don't Plan to Implement	Don't Have/Don't Plan to Implement	Don't Have/Don't Plan to Implement	
<b>Rhode Island</b>	Don't Have/Don't Plan to Implement	Plan to Implement 2014	Under Consideration	In Place 2013				

**Table 8: Status of Medicaid LTSS Programs (Continued)**

	<i>Medicaid HCBS §1915 (c) Waiver Program</i>	<i>Medicaid Managed LTSS (Regardless of Authority)</i>	<i>Medicaid §III5 Demonstration Program for LTSS Other Than Medicaid Managed LTSS</i>	<i>Medicaid State Plan Personal Care Services</i>	<i>Medicaid State Plan §1915 (i) Program</i>	<i>Medicaid State Plan §1915 (j) Program</i>	<i>Medicaid State Plan §1915 (k) Program</i>	<i>Comments</i>
<b>South Carolina</b>	In Place 2013	Plan to Implement 2014						South Carolina intends to implement MLTSS through a CMS Financial Alignment Demonstration.
<b>South Dakota</b>	In Place 2013	Don't Have/Don't Plan to Implement	Plan to Implement 2014	In Place 2013	Don't Have/Don't Plan to Implement	Don't Have/Don't Plan to Implement	Don't Have/Don't Plan to Implement	
<b>Tennessee</b>	In Place 2013	In Place 2013	Don't Have/Don't Plan to Implement	Don't Have/Don't Plan to Implement	Don't Have/Don't Plan to Implement	Don't Have/Don't Plan to Implement	Don't Have/Don't Plan to Implement	Medicaid MLTSS program includes 1915(i)-"like" component for persons that do not meet NF level of care.
<b>Texas</b>	In Place 2013	In Place 2013	Under Consideration	In Place 2013	Under Consideration	In Place 2013	Under Consideration	
<b>Utah</b>	In Place 2013	Don't Have/Don't Plan to Implement	Don't Have/Don't Plan to Implement	In Place 2013	Don't Have/Don't Plan to Implement	Don't Have/Don't Plan to Implement	Don't Have/Don't Plan to Implement	
<b>Vermont</b>	Don't Have/Don't Plan to Implement	Don't Have/Don't Plan to Implement	In Place 2014	Don't Have/Don't Plan to Implement	Don't Have/Don't Plan to Implement	Don't Have/Don't Plan to Implement	Don't Have/Don't Plan to Implement	All of Vermont Medicaid is under two 1115 waivers; discussions under way to integrate into one waiver
<b>Virginia</b>	In Place 2013	Don't Have/Don't Plan to Implement	Don't Have/Don't Plan to Implement	Don't Have/Don't Plan to Implement	In Place 2013	Don't Have/Don't Plan to Implement	Don't Have/Don't Plan to Implement	
<b>Washington</b>	In Place 2013	In Place 2014	Don't Have/Don't Plan to Implement	In Place 2013	Under Consideration	Don't Have/Don't Plan to Implement	Plan to Implement 2015	
<b>West Virginia</b>	In Place 2013			In Place 2013				
<b>Wisconsin</b>	In Place 2013	In Place 2013		In Place 2013	In Place 2013		Plan to Implement 2014	
<b>Wyoming</b>	In Place 2013							



**Table 9: Medicaid HCBS Waiver Services Available to Older Adults and/or People With Disabilities**

	Adult Day Health	Adult Day Social	Adult Foster Care	Assisted Living	Assistive Technology	Behavioral Supports	Case Management	Community Transition Support	Day Habilitation	Home-Delivered Meals	Homemaker	Nutritional Supplements	Occupational Therapy	Personal Assistance Services
<b>Alabama</b>	OA/PD/ID/TBI	ID/TBI		NA	OA/PD/ID/TBI	ID	OA/PD/ID/TBI	OA/PD/ID/TBI	ID/TBI	OA/PD	OA/PD/ID/TBI	OA/PD	ID	OA/PD/ID
<b>Alaska</b>	NA	OA/PD	NA	NA	NA	NA	OA/PD/ID	NA	ID	OA/PD/ID	NA	NA	NA	NA
<b>Arizona</b>	OA/PD/ID		OA/PD/ID	OA/PD/ID		OA/PD/ID	OA/PD/ID	OA/PD/ID	OA/PD/ID	OA/PD/ID	OA/PD/ID		PD/ID	OA/PD/ID
<b>Arkansas</b>	OA	OA	OA	OA/PD	OA/ID	ID	OA/PD/ID	OA/PD/ID	ID	OA	OA	NA	ID	OA/PD/ID
<b>California</b>	OA	OA/ID		OA/PD/ID/TBI	PD	ID	OA/PD/ID/TBI	OA/PD/ID/TBI	ID	OA/ID	OA/PD/ID/TBI	OA/PD/ID/TBI	ID	OA/PD/ID/TBI
<b>Colorado</b>	OA/PD/ID/TBI	OA/PD/ID/TBI	NA	OA/PD	ID/TBI	ID/TBI	OA/PD/ID/TBI	OA/PD/ID/TBI	ID/TBI	NA	OA/PD/ID/TBI	NA	NA	OA/PD/ID/TBI
<b>Connecticut</b>	OA	OA	NA	OA/PD	OA/PD/ID/TBI	OA/PS/ID/TBI	OA/PD/ID/TBI	OA/PD/ID/TBI		OA/PD	OA/PD		ID/DD	OA/PD/ID/TBI
<b>Delaware</b>	OA, PD, TBI	OA/ PD/ TBI	NA	OA/ PD/ TBI	OA/ PD/ TBI	OA/PD/ID/TBI	OA/PD/ID/TBI	OA/ PD/ TBI	OA/ PD/ID/ TBI	OA/ PD/ TBI	OA/ PD/ TBI	PD	NA	OA/ PD/ TBI
<b>District of Columbia</b>	OA/PD/ID/TBI	OA/PD/ID/TBI	OA/PD/ID	OA/PD/ TBI	NA	OA/PD/ID/TBI	NA	NA	OA/ PD/ID/ TBI/ NA	NA	NA	OA/PD/ID/ TBI	OA/ PD/ID/ TBI	OA/PD/ID/ TBI
<b>Florida</b>	OA	OA		OA	OA		OA	OA		OA	OA		OA	OA
<b>Georgia</b>	OA/PD	NA		OA/PD	ID	ID	OA/PD	OA/PD		OA/PD	OA/PD	ID	OA/ PD/ID	OA/PD/ID
<b>Hawaii</b>	OA/PD/ID/TBI	OA/PD/ID/TBI	OA/PD/ID/TBI	OA/PD/ID/TBI	OA/PD/ID/TBI	OA/PD/ID/TBI	OA/PD/ID/TBI	NA	ID	OA/ PD/ID/ TBI	OA/ PD/ID/ TBI	OA/PD/ID/ TBI	OA/ PD/ID/ TBI	OA/PD/ID/ TBI
<b>Idaho</b>														
<b>Illinois</b>		OA	NA	OA/PD	PD/TBI	NA	OA/PD/ID/TBI	NA	ID	NA	OA/ PD/ TBI	NA	NA	PD
<b>Indiana</b>	OA/PD/TBI	OA/PD/ID/TBI	OA/PD/ID	OA/PD	ID	ID/TBI	OA/PD/ID	OA/PD/ID	ID/TBI	OA/ PD/ TBI	OA/ PD/ TBI	OA/PD/TBI	ID	OA/PD/TBI
<b>Iowa</b>			NA	NA	OA/PD/ID/TBI	ID/TBI	OA/ID/TBI	NA	ID/TBI	OA	OA	OA	NA	OA/PD/ID/TBI
<b>Kansas</b>	OA	ID	NA	OA	OA/PD/ID/TBI	TBI	ID	NA	ID	PD/TBI	OA	NA	TBI	OA/PD/ID/TBI
<b>Kansas (Aging/Disab)</b>	OA	OA	PD	OA	OA/PD/ID/TBI	ID	ID	OA/TBI	ID	OA/ PD/ TBI	OA/PD	NA	TBI	OA/PD/ID/TBI
<b>Kentucky</b>														

OA = Older Adults • PD = Individuals with Physical Disabilities • ID = Individuals with Intellectual & Developmental Disabilities • TBI = Individuals with Traumatic Brain Injury • NA = Not Applicable



	Personal Emergency Response Systems	Physical Therapy	Recreation Therapy	Residential Habilitation	Respite	Specialized Equipment and Supplies	Speech Therapy	Supported Employment	Supported Living	Transportation	Extended State Plan Waiver Benefit: Personal Care	Extended State Plan Waiver Benefit: Nursing	Extended State Plan Waiver Benefit: Home Health	Extended State Plan Waiver Benefit: Other	Comments
	ID		ID	OA/PD/ID/TBI	PD/ID/TBI	NA	ID	NA		NA	PD/TBI	NA	NA		
NA	NA	NA	ID	OA/PD/ID	OA/PD/ID	NA	ID	OA/PD	OA/PD/ID	NA	NA	NA	NA		
OA/PD/ID	OA/PD/ID		OA/PD/ID	OA/PD/ID	OA/PD/ID	OA/PD/ID	OA/PD/ID	OA/PD/ID	OA/PD/ID						
OA	ID	NA	NA	OA/ID	OA/PD/ID	ID	NA	ID	OA/ID	OA/PD/ID	NA	NA	NA		
OA/ID	ID	ID	ID	OA/ID		ID	ID	ID	OA/ID	OA/ID	ID	OA/PD/ID	OA/ID		
OA/PD/ID/TBI	NA	NA	ID/TBI	OA/PD/ID/TBI	TBI	NA	ID/TBI	ID/TBI	OA/PD/ID/TBI	NA	NA	NA	NA		
OA/PD/ID/TBI	N	N	UNSURE	OA/PD	OA/PD/ID/TBI	Unknown	PD/ID/TBI	PD/ID/TBI	OA/PD/ID/TBI	TBI			NA		
OA/PD/TBI	See note	NA	ID	OA/PD/TBI	OA/PD/TBI	See note	ID	ID		NA	NA	NA	NA		
NA	OA/PD/ID/TBI	NA	OA/PD/ID/TBI	OA/PD/ID/TBI	OA/PD/ID/TBI	NA	NA	NA	OA/PD/ID/TBI	OA/PD/ID	NA	NA	OA/PD/ID/TBI		
OA	OA			OA	OA	OA			OA						
OA/PD	ID			OA/PD			ID		OA/PD/ID						
OA/PD/ID/TBI	OA/PD/ID/TBI	NA	ID	OA/PD/ID/TBI	OA/PD/ID/TBI	OA/PD/ID/TBI	ID	NA	OA/PD/ID/TBI	NA	NA	NA	NA		
OA	NA	NA	NA	NA	NA	NA	NA	ID	OA	NA	NA	NA	NA		
OA/PD/ID/TBI	ID	ID	ID/TBI	OA/PD/ID/TBI	OA/PD/ID/TBI		ID/TBI		OA/PD/ID/TBI		OA/PD/TBI	OA/PD/TBI	OA/PD/TBI		
OA/PD/ID/TBI	NA	NA	NA	OA/PD/ID/TBI	OA/PD/ID/TBI	NA	ID/TBI	ID/TBI	OA/PD/ID/TBI	OA/PD/ID/TBI	OA/PD/ID	OA/PD/ID/TBI	OA/PD/ID/TBI	Iowa also has the Consumer Choice Option to allow members to self direct services.	
OA/PD/ID/TBI	TBI	NA	ID	ID	NA	TBI	ID	ID	PD/TBI	NA	NA	NA	NA	none	
OA/PD/ID/TBI	TBI	NA	TBI	OA/PD/ID/TBI	OA/PD/ID/TBI	TBI	ID	NA	OA/PD/ID/TBI		ID	OA			

OA = Older Adults • PD = Individuals with Physical Disabilities • ID = Individuals with Intellectual & Developmental Disabilities • TBI = Individuals with Traumatic Brain Injury • NA = Not Applicable

Table 9: Medicaid HCBS Waiver Services Available to Older Adults and/or People With Disabilities (Continued)

	Adult Day Health	Adult Day Social	Adult Foster Care	Assisted Living	Assistive Technology	Behavioral Supports	Case Management	Community Transition Support	Day Habilitation	Home-Delivered Meals	Homemaker	Nutritional Supplements	Occupational Therapy	Personal Assistance Services
<b>Louisiana</b>	OA/PD	ID	ID	NA	OA/PD/ ID	ID	OA/PD/ ID	OA/PD/ ID	ID	OA/PD	NA	OA/PD/ID	OA/ PD/ID	OA/PD/ID
<b>Maine</b>	OA/PD				PD/ID	ID	OA/PD/ ID		ID				OA/PD	OA/PD/ID
<b>Maryland</b>	OA/PD/ID	NA	NA	OA/PD	OA/PD/ ID/TBI	OA/PD/ ID	OA/PD/ ID/TBI	OA/PD/ ID/TBI	ID	OA/ PD/ID/ TBI	OA/ PD/ID	NA	OA/ PD/ID/ TBI	OA/PD/ID/ TBI
<b>Massachusetts</b>	NA	OA/PD/ ID/TBI	NA	PD	OA/PD/ ID/TBI	PD/ID	OA/PD/ ID/TBI	OA/PD/ ID/TBI	NA	OA	OA/ PD/ TBI	NA	OA/ PD/ID/ TBI	OA/PD/TBI
<b>Michigan</b>	OA/PD	NA	OA/PD	NA	OA/PD/ ID/TBI	ID	OA/PD/ ID/TBI	OA/PD	ID	OA/PD	OA/PD	NA	OA/PD	OA/PD
<b>Minnesota</b>	OA/PD/ID/ TBI	OA/PD/ ID/TBI	OA/PD/ TBI	OA/PD/ ID/TBI	OA	TBI	OA/PD/ ID/TBI	PD/ID/ TBI	ID	OA/ PD/ID/ TBI	OA/ PD/ID/ TBI			
<b>Mississippi</b>														
<b>Missouri</b>	NA	OA/PD/ ID	ID	OA/PD	ID	ID	PD/ID	ID	ID	OA	OA/PD			OA/PD/ID
<b>Montana</b>														
<b>Nebraska</b>														
<b>Nevada</b>	NA	OA	NA	OA/PD	NA	ID	OA/PD/ ID		ID	PD	OA/PD	NA	NA	NA
<b>New Hampshire</b>	OA/PD/ID/ TBI	ID/TBI	OA/PD/ ID	OA/PD/ ID/TBI	OA/PD/ ID/TBI	ID/TBI	OA/PD/ ID/TBI	OA/PD/ TBI	ID/TBI	OA/PD	OA/PD			OA/PD/ID/ TBI
<b>New Jersey</b>	OA/PD/ID/ TBI	OA/PD	OA/PD	OA/PD	OA/PD	ID	OA/PD/ ID/TBI	OA/PD/ ID/TBI	ID/TBI	OA/PD	NA	PD	PD/ID/ TBI	PD/ID/TBI
<b>New Mexico</b>	OA/PD	OA/PD/ ID/TBI	NA	OA/PD	OA/PD/ ID/TBI	OA/PD/ ID/TBI	ID	OA/PD/ TBI	ID	NA	OA/PD	NA	OA/ PD/ID/ TBI	OA/PD/ID/ TBI
<b>New York</b>														
<b>North Carolina</b>				OA/PD	ID	OA/PD/ ID	OA/PD/ ID	OA/PD/ ID	ID	OA/ PD/ID	OA/ PD/ID	OA/PD/ID		OA/PD/ID
<b>North Dakota</b>	OA/PD/TBI	OA/PD/ TBI	OA/PD/ TBI	NA	OA/PD/ TBI		OA/PD/ TBI	OA/PD/ TBI	NA	OA/ PD/ TBI	OA/ PD/ TBI	NA	NA	NA
<b>Ohio</b>	OA/PD	OA/PD	ID	OA/PD	OA/PD/ ID	NA	NA	OA	ID	OA/ PD/ID	OA/ID	ID	NA	OA/PD/ID

OA = Older Adults • PD = Individuals with Physical Disabilities • ID = Individuals with Intellectual & Developmental Disabilities • TBI = Individuals with Traumatic Brain Injury • NA = Not Applicable

	Personal Emergency Response Systems	Physical Therapy	Recreation Therapy	Residential Habilitation	Respite	Specialized Equipment and Supplies	Speech Therapy	Supported Employment	Supported Living	Transportation	Extended State Plan Waiver Benefit: Personal Care	Extended State Plan Waiver Benefit: Nursing	Extended State Plan Waiver Benefit: Home Health	Extended State Plan Waiver Benefit: Other	Comments
	OA/PD/ID	OA/PD/ID		ID	OA/PD/ID	OA/PD/ID	ID	ID	OA/PD	NA	OA/PD/ID				Waivers include nursing but it is not necessarily an extended state plan benefit as it is defined differently.
	OA/PD/ID	OA/PD		ID	OA/PD/ID	ID	OA/PD/ID	ID	ID	OA/PD/ID					
	OA/PD	OA/PD/ID/TBI	NA	ID	OA/PD	OA/PD/ID/TBI	ID	ID	ID	OA/PD/ID/TBI					
	NA	PD/ID/TBI	NA	PD/ID/TBI	OA/PD/ID/TBI	OA/PD/ID/TBI	PD/ID/TBI	PD/ID/TBI	PD/ID/TBI	OA/PD/ID/TBI	NA	NA	NA	NA	All waiver participants are case managed, but case management is not a waiver service. Rather, it is provided as TCM or administrative case management. Transition support may be a waiver service or through the MFP demo
	OA/PD/ID/TBI	PD/ID/TBI	OA/PD	NA	OA/PD/ID/TBI	OA/PD/ID/TBI	OA/PD	OA/PD/ID/TBI	OA/PD/ID/TBI	OA/PD/ID/TBI	NA	OA/PD/ID/TBI	NA	NA	
	OA/PD/ID/TBI			ID	OA/PD/ID/TBI	OA/PD/ID/TBI		PD/ID/TBI		OA/PD/ID/TBI	OA/PD/ID/TBI	OA/PD/TBI	OA/PD/TBI		
	ID	ID		OA/ID	PD/ID	ID	ID	ID	PD/ID	OA/PD	OA/PD				
	OA/PD	NA	NA	ID	OA/PD	PD	NA	ID	ID	ID	PD	ID	NA	ID	
	OA/PD/ID/TBI			ID/TBI	OA/PD/ID/TBI	OA/PD/ID/TBI		ID/TBI	ID/TBI	OA/PD/ID/TBI	NA	NA	NA	NA	
	OA/PD/ID	PD/ID	PD	ID/NA	OA/PD/ID	OA/PD	PD/ID	ID		OA/PD/ID		PD	PD	NA	
	OA/PD	OA/PD/ID/TBI	NA	ID	OA/PD	OA/PD/ID/TBI	OA/PD/ID/TBI	OA/PD/ID/TBI	ID	OA/PD/ID/TBI	OA/PD/TBI	OA/PD/ID	OA/PD/ID		
	OA/PD/ID			ID	OA/PD/ID	OA/PD		ID		OA/PD/ID					
	OA/PD/TBI	NA	NA	OA/PD/TBI	OA/PD/TBI	OA/PD/TBI	NA	OA/PD/TBI	NA	OA/PD/TBI	NA	NA	NA	NA	
	OA/PD/ID	NA	NA	NA	OA/PD/ID	OA/PD/ID	NA	ID	ID	OA/PD/ID	NA	OA/PD	NA	NA	Individuals with TBI are included in other waivers and do not have a program specifically for this population.

OA = Older Adults • PD = Individuals with Physical Disabilities • ID = Individuals with Intellectual & Developmental Disabilities • TBI = Individuals with Traumatic Brain Injury • NA = Not Applicable

Table 9: Medicaid HCBS Waiver Services Available to Older Adults and/or People With Disabilities (Continued)

	Adult Day Health	Adult Day Social	Adult Foster Care	Assisted Living	Assistive Technology	Behavioral Supports	Case Management	Community Transition Support	Day Habilitation	Home-Delivered Meals	Homemaker	Nutritional Supplements	Occupational Therapy	Personal Assistance Services
<b>Oklahoma</b>	ID	OA/PD/ID	NA	OA/PD/	OA/PD/ID	OA/PD/ID	OA/PD/ID	ID	OA/PD/ID	OA/PD/ID	OA/PD/ID	OA/PD/ID	OA/PD/ID	OA/PD/ID
<b>Oregon</b>	OA/PD/ID/TBI	OA/PD/ID/TBI	OA/PD/ID/TBI	OA/PD/ID/TBI	OA/PD/ID/TBI	OA/PD/ID/TBI	OA/PD/ID/TBI	OA/PD/ID/TBI	OA/PD/ID/TBI	OA/PD/ID/TBI	OA/PD/ID/TBI	ID	ID	OA/PD/ID/TBI
<b>Pennsylvania</b>	OA/PD/ID/TBI	OA	NA	NA	OA/PD/ID/TBI	ID/TBI	OA/PD/ID/TBI	OA/PD/ID/TBI	PD/ID/TBI	OA	NA	NA	OA/PD/ID/TBI	OA/PD/ID/TBI
<b>Rhode Island</b>	OA/PD/ID/TBI	OA		OA/PD/ID/TBI	OA/PD/ID/TBI		OA	OA/PD/ID/TBI	PD/TBI	OA	OA			OA/PD/ID/TBI
<b>South Carolina</b>														
<b>South Dakota</b>	NA	OA/PD	NA	OA/PD	OA/PD/ID	NA	OA/PD/ID	NA	ID/NA	OA/PD	OA/PD/ID	OA/PD/ID	NA	ID
<b>Tennessee</b>	NA	NA	ID	NA	NA	ID	ID	NA	ID	NA	NA	NA	ID	ID
<b>Texas</b>	OA/PD		OA/PD	OA/PD			PD	OA/PD		OA/PD	OA/PD	OA/PD	OA/PD	OA/PD
<b>Utah</b>	NA	NA	NA	NA	OA	NA	OA	NA	NA	OA	OA	OA	NA	OA
<b>Vermont</b>	OA/PD/ID	NA	OA/PD/ID/TBI	OA/PD	OA/PD/ID/TBI	OA/PD/ID/TBI	OA/PD/ID/TBI	OA/PD/ID/TBI	ID	NA	OA/PD	NA	NA	OA/PD/ID/TBI
<b>Virginia</b>	PD	NA	PD	NA	PD	PD	PD	NA	NA	NA	NA	NA	NA	PD
<b>Washington</b>	OA/PD	OA/PD	OA/PD/ID	OA/PD	OA/PD/ID	OA/PD/ID	OA/PD/ID	OA/PD/ID	ID	OA/PD	NA	NA	ID	OA/PD/ID
<b>West Virginia</b>	NA	NA	NA	NA	OA/PD/ID/TBI	ID	OA/PD/ID/TBI	OA/PD/ID/TBI	ID	NA	OA/PD/ID/TBI	See Comments	ID	OA/PD/TBI
<b>Wisconsin</b>														
<b>Wyoming</b>		OA		OA			OA			OA				OA

OA = Older Adults • PD = Individuals with Physical Disabilities • ID = Individuals with Intellectual & Developmental Disabilities • TBI = Individuals with Traumatic Brain Injury • NA = Not Applicable

	Personal Emergency Response Systems	Physical Therapy	Recreation Therapy	Residential Habilitation	Respite	Specialized Equipment and Supplies	Speech Therapy	Supported Employment	Supported Living	Transportation	Extended State Plan Waiver Benefit: Personal Care	Extended State Plan Waiver Benefit: Nursing	Extended State Plan Waiver Benefit: Home Health	Extended State Plan Waiver Benefit: Other	Comments
	OA/PD/ID	OA/PD/ID	OA/PD/ID	NA	OA/PD/ID	OA/PD/ID	OA/PD/ID	NA	NA	OA/PD/ID	NA	NA	NA	NA	
	OA/PD/ID/TBI	ID	NA	ID	OA/PD/ID/TBI	OA/PD/ID/TBI	ID	ID	OA/PD/ID/TBI	OA/PD/ID/TBI	NA	NA	NA		
	OA/PD/ID/TBI	OA/PD/ID/TBI	ID	ID/TBI	OA/PD/ID/TBI	OA/PD/ID/TBI	PD/ID/TBI	NA	OA/PD/ID/TBI	OA/PD/ID/TBI	OA/PD/ID/TBI	OA/PD/ID/TBI	OA/PD/ID/TBI		
	OA			OA	OA/PD/ID/TBI			ID	OA						
	OA/PD/ID	NA	NA	ID	OA/PD/ID	OA/PD/ID	NA	ID	NA	OA/PD/ID	OA/PD/ID	NA	NA		
	ID	ID	NA	ID	ID	ID	ID	ID	ID	NA	ID	NA	ID		Medicaid HCBS waivers exist in TN ONLY for the ID population. OA and adults with physical disabilities are served through MLTSS. Adult foster care is called Family Model Residential in these waivers. Additional services are covered in these waivers that are not listed above.
	OA/PD	OA/PD		OA/PD	OA/PD	OA/PD									
	OA	NA	NA	NA	NA	OA	NA	NA	OA	NA	NA	NA	NA		
	OA/PD	NA	NA	ID/TBI	OA/PD/ID/TBI	NA	NA	ID/TBI	OA/PD/ID/TBI	NA	NA	NA	NA		
	PD	NA	NA	NA	PD	PD	NA	NA	NA	NA	NA	NA	NA		
	OA/PD	ID	NA	ID	ID	OA/PD/ID	ID	ID	ID	OA/PD/ID	NA	NA	NA	ID	DD/ID has Extended State Plan waiver benefit for therapies.
	See Comments	ID	NA	ID	ID	See Comments	ID	ID	NA	OA/PD/ID/TBI	OA/PD/ID/TBI	ID	OA/PD/ID/TBI	ID (PT,OT,ST)	Members in 3 waivers who are self-directing and have budget authority may use Participant-Directed Goods and Services to purchase nutritional supplements, Personal assistance response systems and specialized equipment and supplies.
	OA				OA										

OA = Older Adults • PD = Individuals with Physical Disabilities • ID = Individuals with Intellectual & Developmental Disabilities • TBI = Individuals with Traumatic Brain Injury • NA = Not Applicable

**Table 10: Operating Agency Responsible for Medicaid LTSS Programs**

	<i>Adult Foster Care Clients</i>	<i>Individuals with Dementia/ Alzheimer's Disease</i>	<i>Assisted Living Clients</i>	<i>Individuals with Autism</i>	<i>Individuals with Intellectual/ Developmental Disabilities</i>	<i>Older Adults</i>	<i>Older Adults and Adults with Physical Disabilities</i>	<i>Adults with Physical Disabilities</i>	<i>Individuals with Severe Emotional Disturbance</i>	<i>Individuals with Traumatic Brain Injury</i>
<b>Alabama</b>										
<b>Alaska</b>	Not Applicable	Not Applicable	Not Applicable	Not Applicable	Aging and/or Disability Agency	Not Applicable	Aging and/or Disability Agency	Not Applicable	Not Applicable	Not Applicable
<b>Arizona</b>					Medicaid Agency		Medicaid Agency			
<b>Arkansas</b>	Aging and/or Disability Agency	Aging and/or Disability Agency	Aging and/or Disability Agency	I/DD Agency	I/DD Agency	Aging and/or Disability Agency	Aging and/or Disability Agency	Aging and/or Disability Agency	Other (Behavioral Health Agency)	Aging and/or Disability Agency
<b>California</b>			Medicaid Agency		I/DD Agency	Aging and/or Disability Agency	Other	Other		
<b>Colorado</b>	Medicaid Agency		Medicaid Agency	Medicaid Agency	Medicaid Agency	Medicaid Agency	Medicaid Agency	Medicaid Agency	Medicaid Agency	Medicaid Agency
<b>Connecticut</b>		State Department on Aging	Medicaid Agency	I/DD Agency	I/DD Agency	Aging	Medicaid Agency	Medicaid Agency	Mental Health Agency	Medicaid Agency
<b>Delaware</b>		Medicaid Agency	Medicaid Agency	I/DD Agency	I/DD Agency	Medicaid Agency	Medicaid Agency	Medicaid Agency		Medicaid Agency
<b>District of Columbia</b>										
<b>Florida</b>										
<b>Georgia</b>	Not Applicable	Aging and/or Disability Agency	Aging and/or Disability Agency	I/DD Agency	I/DD Agency	Aging and/or Disability Agency	Aging and/or Disability Agency	Aging and/or Disability Agency	I/DD Agency	Medicaid Agency
<b>Hawaii</b>	Medicaid Agency	Medicaid Agency	Medicaid Agency	Medicaid Agency	Medicaid Agency	Medicaid Agency	Medicaid Agency	Medicaid Agency	Medicaid Agency	Medicaid Agency
<b>Idaho</b>										
<b>Illinois</b>			Medicaid Agency			Aging and/or Disability Agency		Aging and/or Disability Agency		Aging and/or Disability Agency
<b>Indiana</b>	Aging and/or Disability Agency	Not Applicable	Aging and/or Disability Agency	I/DD Agency	I/DD Agency	Aging and/or Disability Agency	Aging and/or Disability Agency	Aging and/or Disability Agency	Other	Aging and/or Disability Agency
<b>Iowa</b>	Not Applicable	Medicaid Agency	Medicaid Agency	Not Applicable	Medicaid Agency	Medicaid Agency	Medicaid Agency	Medicaid Agency	Medicaid Agency	Medicaid Agency
<b>Kansas (Medicaid)</b>	Not Applicable	Not Applicable	Aging and/or Disability Agency	Aging and/or Disability Agency	Aging and/or Disability Agency	Aging and/or Disability Agency	Aging and/or Disability Agency	Aging and/or Disability Agency	Aging and/or Disability Agency	Aging and/or Disability Agency
<b>Kansas (Aging/Disab)</b>	Not Applicable	Not Applicable	Aging and/or Disability Agency	Aging and/or Disability Agency	Aging and/or Disability Agency	Aging and/or Disability Agency	Aging and/or Disability Agency	Aging and/or Disability Agency	Aging and/or Disability Agency	Aging and/or Disability Agency
<b>Kentucky</b>										
<b>Louisiana</b>	Not Applicable	Not Applicable	Not Applicable	Not Applicable	I/DD Agency	Not Applicable	Other	Not Applicable	Other	Not Applicable
<b>Maine</b>										
<b>Maryland</b>		Medicaid Agency	Medicaid Agency	Medicaid Agency	Medicaid Agency	Medicaid Agency	Medicaid Agency	Medicaid Agency		Medicaid Agency
<b>Massachusetts</b>	Medicaid Agency	Aging and/or Disability Agency	Medicaid Agency	I/DD Agency	I/DD Agency	Aging and/or Disability Agency	Aging and/or Disability Agency	Aging and/or Disability Agency		Aging and/or Disability Agency
<b>Michigan</b>	Medicaid Agency	Medicaid Agency		Medicaid Agency	Medicaid Agency	Medicaid Agency	Medicaid Agency	Medicaid Agency	Medicaid Agency	Medicaid Agency
<b>Minnesota</b>	Aging and/or Disability Agency	Medicaid Agency	Aging and/or Disability Agency	Aging and/or Disability Agency	Aging and/or Disability Agency	Medicaid Agency	Aging and/or Disability Agency	Aging and/or Disability Agency		Aging and/or Disability Agency
<b>Mississippi</b>										

**Table 10: Operating Agency Responsible for Medicaid LTSS Programs (Continued)**

	Adult Foster Care Clients	Individuals with Dementia/ Alzheimer's Disease	Assisted Living Clients	Individuals with Autism	Individuals with Intellectual/ Developmental Disabilities	Older Adults	Older Adults and Adults with Physical Disabilities	Adults with Physical Disabilities	Individuals with Severe Emotional Disturbance	Individuals with Traumatic Brain Injury
Missouri		Aging and/ or Disability Agency	Aging and/ or Disability Agency	I/DD Agency	I/DD Agency	Aging and/ or Disability Agency	Aging and/ or Disability Agency	Aging and/ or Disability Agency	Other (State Mental Health Agency)	
Montana										
Nebraska										
Nevada			Aging and/ or Disability Agency		Aging and/ or Disability Agency	Aging and/ or Disability Agency		Medicaid Agency		
New Hampshire	Aging and/ or Disability Agency	Aging and/ or Disability Agency	Aging and/ or Disability Agency	Not Applicable	I/DD Agency	Aging and/ or Disability Agency	Aging and/ or Disability Agency	Aging and/ or Disability Agency	Not Applicable	I/DD Agency
New Jersey	Medicaid Agency	Aging and/ or Disability Agency; Medicaid Agency	Medicaid Agency	I/DD Agency	I/DD Agency	Aging and/ or Disability Agency; Medicaid Agency	Aging and/ or Disability Agency; Medicaid Agency	Aging and/ or Disability Agency; Medicaid Agency	Medicaid Agency; Other (Mental Health Agency)	Aging and/ or Disability Agency; Medicaid Agency
New Mexico		Medicaid Agency	Medicaid Agency	Medicaid Agency	Medicaid Agency	Medicaid Agency	Medicaid Agency	Medicaid Agency	Medicaid Agency	Medicaid Agency
New York										
North Carolina	Not Applicable	Not Applicable	Not Applicable	Not Applicable	I/DD Agency	Not Applicable	Medicaid Agency	Not Applicable	I/DD Agency	Not Applicable
North Dakota	Medicaid Agency	Medicaid Agency	Medicaid Agency	I/DD Agency	I/DD Agency	Medicaid Agency	Medicaid Agency	Medicaid Agency		Medicaid Agency
Ohio	Other	Aging and/ or Disability Agency	Aging and/ or Disability Agency	Aging and/ or Disability Agency	I/DD Agency	Aging and/ or Disability Agency	Aging and/ or Disability Agency	Aging and/ or Disability Agency	Other	Other
Oklahoma	Not Applicable	Not Applicable	Aging and/ or Disability Agency	Not Applicable	Aging and/ or Disability Agency	Aging and/ or Disability Agency	Aging and/ or Disability Agency	Aging and/ or Disability Agency	Not Applicable	Not Applicable
Oregon	Aging and/ or Disability Agency	Aging and/ or Disability Agency	Aging and/ or Disability Agency	I/DD Agency	I/DD Agency	Aging and/ or Disability Agency	Aging and/ or Disability Agency	Aging and/ or Disability Agency	Medicaid Agency	Aging and/ or Disability Agency
Pennsylvania										
Rhode Island	Medicaid Agency		Medicaid Agency							
South Carolina										
South Dakota	Not Applicable	Not Applicable	Aging and/ or Disability Agency	Not Applicable	Other	Aging and/ or Disability Agency	Aging and/ or Disability Agency	Aging and/ or Disability Agency	Not Applicable	Other
Tennessee					I/DD Agency		Medicaid Agency			
Texas	Not Applicable	Not Applicable	Not Applicable	Not Applicable	Not Applicable	Not Applicable	Not Applicable	Not Applicable	Not Applicable	Not Applicable
Utah						Aging and/ or Disability Agency				
Vermont	Aging and/ or Disability Agency	Aging and/ or Disability Agency	Aging and/ or Disability Agency	Aging and/ or Disability Agency	Aging and/ or Disability Agency	Aging and/ or Disability Agency	Aging and/ or Disability Agency	Aging and/ or Disability Agency	Other (Mental Health Agency)	Aging and/ or Disability Agency
Virginia					I/DD Agency		Medicaid Agency	Medicaid Agency		
Washington	Aging and/ or Disability Agency	Not Applicable	Aging and/ or Disability Agency	Not Applicable	I/DD Agency	Not Applicable	Aging and/ or Disability Agency	Not Applicable	I/DD Agency	Not Applicable
West Virginia										
Wisconsin										
Wyoming			Medicaid Agency		Aging and/ or Disability Agency	Medicaid Agency	Aging and/ or Disability Agency	Aging and/ or Disability Agency		Aging and/ or Disability Agency

**Table 11: State Agencies Providing Federally-Funded, Non-Medicaid Programs/Services for Older Adults**

	<i>Adult Day Health (Includes Health Component)</i>	<i>Adult Day Social (Does Not Include Health Component)</i>	<i>Adult Protective Services</i>	<i>Aging and Disability Resource Center</i>	<i>Alzheimer's Support Programs</i>	<i>Case Management</i>	<i>Child and Adult Care Food Program (CACFP)</i>	<i>Chore</i>	<i>Commodity Supplemental Food Program (CSFP)</i>	<i>Congregate Meals</i>	<i>Chronic Disease Self-Management, Prevention, and Health Promotion</i>	<i>Disability Representative Payee</i>	<i>Elder Abuse Prevention</i>	<i>Family Caregiver Support</i>	<i>Guardianship (for Adults)</i>	<i>Guardianship (for People with Disabilities)</i>	<i>Home Delivered Meals</i>	<i>Homemaker</i>
<b>Alabama</b>	Not Provided	Not Provided		Aging and/or Disability Agency	Aging and/or Disability Agency	Aging and/or Disability Agency	Unknown	Aging and/or Disability Agency	Unknown	Aging and/or Disability Agency	Aging and/or Disability Agency	Not Provided	Aging and/or Disability Agency	Not Provided	Not Provided	Aging and/or Disability Agency	Aging and/or Disability Agency	
<b>Alaska</b>	Not Provided	Aging and/or Disability Agency	Aging and/or Disability Agency	Aging and/or Disability Agency	Aging and/or Disability Agency	Aging and/or Disability Agency	Aging and/or Disability Agency	Aging and/or Disability Agency	Aging and/or Disability Agency	Aging and/or Disability Agency	Not Provided	Aging and/or Disability Agency	Aging and/or Disability Agency	Aging and/or Disability Agency	Aging and/or Disability Agency	Aging and/or Disability Agency	Aging and/or Disability Agency	
<b>Arizona</b>	Aging and/or Disability Agency	Aging and/or Disability Agency	Aging and/or Disability Agency	Aging and/or Disability Agency	Aging and/or Disability Agency	Aging and/or Disability Agency	Unknown	Not Provided	Unknown	Aging and/or Disability Agency	Aging and/or Disability Agency	Unknown	Aging and/or Disability Agency	Unknown	Unknown	Aging and/or Disability Agency	Aging and/or Disability Agency	
<b>Arkansas</b>				Aging and/or Disability Agency					Division of County Operations	Aging and/or Disability Agency	Aging and/or Disability Agency		Aging and/or Disability Agency	Aging and/or Disability Agency			Aging and/or Disability Agency	
<b>California</b>	Not Provided	Aging and/or Disability Agency	Aging and/or Disability Agency	Aging and/or Disability Agency	Aging and/or Disability Agency	Aging and/or Disability Agency		Aging and/or Disability Agency	Unknown	Aging and/or Disability Agency	Aging and/or Disability Agency	Aging and/or Disability Agency	Aging and/or Disability Agency	Aging and/or Disability Agency	Aging and/or Disability Agency	Aging and/or Disability Agency	Aging and/or Disability Agency	
<b>Colorado</b>	Aging and/or Disability Agency	Aging and/or Disability Agency	Aging and/or Disability Agency	Aging and/or Disability Agency	Aging and/or Disability Agency	Aging and/or Disability Agency		Aging and/or Disability Agency		Aging and/or Disability Agency	Aging and/or Disability Agency	Unknown	Aging and/or Disability Agency	Aging and/or Disability Agency	Unknown	Unknown	Aging and/or Disability Agency	
<b>Connecticut</b>	Aging	Aging	DSS	Aging	Aging	Aging		Aging	DSS	Aging	Aging		Aging	Aging			Aging	
<b>Delaware</b>	Aging and/or Disability Agency	Aging and/or Disability Agency	Umbrella HHS Agency	Aging and/or Disability Agency	Aging and/or Disability Agency	Aging and/or Disability Agency	Other	Aging and/or Disability Agency	Other	Aging and/or Disability Agency	Aging and/or Disability Agency	Not Provided	Aging and/or Disability Agency	Aging and/or Disability Agency			Aging and/or Disability Agency	
<b>District of Columbia</b>	Medicaid Agency	Medicaid Agency	Not Provided	Aging and/or Disability Agency	Aging and/or Disability Agency	Aging and/or Disability Agency	Medicaid Agency	Medicaid Agency	Aging and/or Disability Agency	Aging and/or Disability Agency	Aging and/or Disability Agency	Medicaid Agency	Aging and/or Disability Agency	Aging and/or Disability Agency	Medicaid Agency	Medicaid Agency	Aging and/or Disability Agency	
<b>Florida</b>	Aging and/or Disability Agency	Aging and/or Disability Agency	Aging and/or Disability Agency	Aging and/or Disability Agency	Aging and/or Disability Agency	Aging and/or Disability Agency	Aging and/or Disability Agency	Aging and/or Disability Agency	Aging and/or Disability Agency	Aging and/or Disability Agency	Aging and/or Disability Agency		Aging and/or Disability Agency	Aging and/or Disability Agency			Aging and/or Disability Agency	
<b>Georgia</b>	Aging and/or Disability Agency	Unknown	Aging and/or Disability Agency	Aging and/or Disability Agency	Aging and/or Disability Agency	Aging and/or Disability Agency	Unknown	Aging and/or Disability Agency	Unknown	Aging and/or Disability Agency		Aging and/or Disability Agency	Aging and/or Disability Agency	Aging and/or Disability Agency	Aging and/or Disability Agency	Aging and/or Disability Agency	Aging and/or Disability Agency	
<b>Hawaii</b>	Aging and/or Disability Agency	Aging and/or Disability Agency	Medicaid Agency	Aging and/or Disability Agency	Aging and/or Disability Agency	Aging and/or Disability Agency		Aging and/or Disability Agency		Aging and/or Disability Agency	Aging and/or Disability Agency		Aging and/or Disability Agency				Aging and/or Disability Agency	
<b>Idaho</b>	Aging and/or Disability Agency	Aging and/or Disability Agency	Aging and/or Disability Agency	Aging and/or Disability Agency	Aging and/or Disability Agency	Aging and/or Disability Agency	Unknown	Aging and/or Disability Agency	Not Provided	Aging and/or Disability Agency	Aging and/or Disability Agency	Unknown	Aging and/or Disability Agency	Aging and/or Disability Agency	Unknown	Unknown	Aging and/or Disability Agency	
<b>Illinois</b>	Not Provided	Not Provided	Aging and/or Disability Agency	Aging and/or Disability Agency	Aging and/or Disability Agency	Aging and/or Disability Agency	Aging and/or Disability Agency	Aging and/or Disability Agency	Aging and/or Disability Agency	Aging and/or Disability Agency	Aging and/or Disability Agency	Unknown	Aging and/or Disability Agency	Aging and/or Disability Agency			Aging and/or Disability Agency	
<b>Indiana</b>	Not Provided	Aging and/or Disability Agency	Aging and/or Disability Agency	Aging and/or Disability Agency	Not Provided	Aging and/or Disability Agency	Unknown	Aging and/or Disability Agency	Unknown	Aging and/or Disability Agency	Aging and/or Disability Agency	Unknown	Not Provided	Aging and/or Disability Agency	Aging and/or Disability Agency	Aging and/or Disability Agency	Aging and/or Disability Agency	
<b>Iowa</b>	Aging and/or Disability Agency	Aging and/or Disability Agency	Aging and/or Disability Agency	Aging and/or Disability Agency	Not Provided	Aging and/or Disability Agency		Aging and/or Disability Agency		Aging and/or Disability Agency	Aging and/or Disability Agency	Not Provided	Aging and/or Disability Agency	Aging and/or Disability Agency	Not Provided	Not Provided	Aging and/or Disability Agency	
<b>Kansas (Medicaid)</b>	Aging and/or Disability Agency	Aging and/or Disability Agency	Aging and/or Disability Agency	Aging and/or Disability Agency	Aging and/or Disability Agency	Aging and/or Disability Agency		Aging and/or Disability Agency		Aging and/or Disability Agency	Aging and/or Disability Agency	Aging and/or Disability Agency	Aging and/or Disability Agency	Aging and/or Disability Agency			Aging and/or Disability Agency	
<b>Kansas (Aging/Disab)</b>	Aging and/or Disability Agency	Aging and/or Disability Agency	Aging and/or Disability Agency	Aging and/or Disability Agency	Aging and/or Disability Agency	Aging and/or Disability Agency	Unknown	Aging and/or Disability Agency		Aging and/or Disability Agency	Aging and/or Disability Agency	Unknown	Aging and/or Disability Agency	Aging and/or Disability Agency			Aging and/or Disability Agency	





**Table 11: State Agencies Providing Federally-Funded, Non-Medicaid Programs/Services for Older Adults**

		Adult Day Health (Includes Health Component)	Adult Day Social (Does Not Include Health Component)	Adult Protective Services	Aging and Disability Resource Center	Alzheimer's Support Programs	Case Management	Child and Adult Care Food Program (CACFP)	Chore	Commodity Supplemental Food Program (CSFP)	Congregate Meals	Chronic Disease Self-Management, Prevention, and Health Promotion	Disability Representative Payee	Elder Abuse Prevention	Family Caregiver Support	Guardianship (for Adults)	Guardianship (for People with Disabilities)	Home Delivered Meals	Homemaker
<b>Kentucky</b>		Aging and/or Disability Agency			Aging and/or Disability Agency	Aging and/or Disability Agency	Aging and/or Disability Agency	Aging and/or Disability Agency		Aging and/or Disability Agency	Aging and/or Disability Agency	Unknown	Aging and/or Disability Agency	Aging and/or Disability Agency	Aging and/or Disability Agency	Aging and/or Disability Agency	Aging and/or Disability Agency	Aging and/or Disability Agency	Aging and/or Disability Agency
<b>Louisiana</b>	Not Provided																		
<b>Maine</b>																			
<b>Maryland</b>		Not Provided		Aging and/or Disability Agency	Aging and/or Disability Agency	Aging and/or Disability Agency	Aging and/or Disability Agency	Aging and/or Disability Agency		Aging and/or Disability Agency	Aging and/or Disability Agency	Unknown	Aging and/or Disability Agency	Aging and/or Disability Agency	Aging and/or Disability Agency	Aging and/or Disability Agency	Aging and/or Disability Agency	Aging and/or Disability Agency	Aging and/or Disability Agency
<b>Massachusetts</b>	Medicaid Agency	Aging and/or Disability Agency	Aging and/or Disability Agency	Aging and/or Disability Agency	Aging and/or Disability Agency	Aging and/or Disability Agency; Medicaid Agency	Not Provided	Aging and/or Disability Agency	Not Provided	Aging and/or Disability Agency	Aging and/or Disability Agency	Unknown	Aging and/or Disability Agency	Aging and/or Disability Agency	Aging and/or Disability Agency	Unknown	Aging and/or Disability Agency	Aging and/or Disability Agency	Aging and/or Disability Agency
<b>Michigan</b>	Aging and/or Disability Agency	Aging and/or Disability Agency	Human Services	Aging and/or Disability Agency	Aging and/or Disability Agency	Aging and/or Disability Agency	Aging and/or Disability Agency; Public Health	Aging and/or Disability Agency	Public Health	Aging and/or Disability Agency	Aging and/or Disability Agency	Aging and/or Disability Agency	Aging and/or Disability Agency	Aging and/or Disability Agency	Aging and/or Disability Agency	Unknown	Aging and/or Disability Agency	Aging and/or Disability Agency	Aging and/or Disability Agency
<b>Minnesota</b>	Not Provided	Not Provided	Aging and/or Disability Agency	Aging and/or Disability Agency	Aging and/or Disability Agency	Aging and/or Disability Agency	Aging and/or Disability Agency	Aging and/or Disability Agency		Aging and/or Disability Agency	Aging and/or Disability Agency	Unknown	Aging and/or Disability Agency	Aging and/or Disability Agency	Not Provided	Not Provided	Aging and/or Disability Agency	Aging and/or Disability Agency	Aging and/or Disability Agency
<b>Mississippi</b>			Aging and/or Disability Agency	Aging and/or Disability Agency	Aging and/or Disability Agency	Aging and/or Disability Agency; Medicaid Agency	Aging and/or Disability Agency	Not Provided		Aging and/or Disability Agency	Aging and/or Disability Agency		Aging and/or Disability Agency	Aging and/or Disability Agency	Not Provided	Not Provided	Aging and/or Disability Agency	Aging and/or Disability Agency	Aging and/or Disability Agency
<b>Missouri</b>	Not Provided	Not Provided	Aging and/or Disability Agency	Aging and/or Disability Agency	Aging and/or Disability Agency	Aging and/or Disability Agency	State Health Agency	Not Provided		Aging and/or Disability Agency	Aging and/or Disability Agency	Unknown	Aging and/or Disability Agency	Aging and/or Disability Agency	Not Provided	Not Provided	Aging and/or Disability Agency	Aging and/or Disability Agency	Not Provided
<b>Montana</b>	Unknown	Unknown	Aging and/or Disability Agency	Aging and/or Disability Agency	Unknown	Not Provided	Unknown												
<b>Nebraska</b>																			
<b>Nevada</b>	Unknown	Aging and/or Disability Agency	Aging and/or Disability Agency	Aging and/or Disability Agency	Aging and/or Disability Agency	Aging and/or Disability Agency	Unknown	Aging and/or Disability Agency	Unknown	Aging and/or Disability Agency	Aging and/or Disability Agency	Unknown	Aging and/or Disability Agency	Aging and/or Disability Agency	Unknown	Unknown	Aging and/or Disability Agency	Aging and/or Disability Agency	Aging and/or Disability Agency
<b>New Hampshire</b>	Aging and/or Disability Agency; Not Provided	Aging and/or Disability Agency	Aging and/or Disability Agency	Aging and/or Disability Agency	Aging and/or Disability Agency	Aging and/or Disability Agency		Aging and/or Disability Agency		Aging and/or Disability Agency	Aging and/or Disability Agency	Not Provided	Aging and/or Disability Agency	Aging and/or Disability Agency	Aging and/or Disability Agency		Aging and/or Disability Agency	Aging and/or Disability Agency	Aging and/or Disability Agency
<b>New Jersey</b>	Not Provided	Not Provided	Not Provided	Not Provided	Not Provided	Not Provided	Unknown			Aging and/or Disability Agency	Aging and/or Disability Agency	Aging and/or Disability Agency							
<b>New Mexico</b>	Not Provided	Aging and/or Disability Agency	Aging and/or Disability Agency	Aging and/or Disability Agency	Aging and/or Disability Agency	Medicaid Agency	Unknown	Aging and/or Disability Agency	Unknown	Aging and/or Disability Agency	Aging and/or Disability Agency	Unknown	Aging and/or Disability Agency	Aging and/or Disability Agency	Unknown	Unknown	Aging and/or Disability Agency	Aging and/or Disability Agency	Aging and/or Disability Agency
<b>New York</b>	Unknown	Aging and/or Disability Agency	Aging and/or Disability Agency	Aging and/or Disability Agency	Aging and/or Disability Agency	Aging and/or Disability Agency	Unknown	Aging and/or Disability Agency	Unknown	Aging and/or Disability Agency	Aging and/or Disability Agency	Unknown	Aging and/or Disability Agency	Aging and/or Disability Agency	Unknown	Unknown	Aging and/or Disability Agency	Aging and/or Disability Agency	Aging and/or Disability Agency
<b>North Carolina</b>	Aging and/or Disability Agency	Aging and/or Disability Agency	Aging and/or Disability Agency	Aging and/or Disability Agency	Aging and/or Disability Agency	Aging and/or Disability Agency	Unknown	Aging and/or Disability Agency	Unknown	Aging and/or Disability Agency	Aging and/or Disability Agency	Aging and/or Disability Agency	Aging and/or Disability Agency	Aging and/or Disability Agency	Aging and/or Disability Agency	Aging and/or Disability Agency	Aging and/or Disability Agency	Aging and/or Disability Agency	Aging and/or Disability Agency
<b>North Dakota</b>	Medicaid Agency	Medicaid Agency	Aging and/or Disability Agency	Aging and/or Disability Agency	Aging and/or Disability Agency	Medicaid Agency		Medicaid Agency		Aging and/or Disability Agency		Unknown	Aging and/or Disability Agency	Aging and/or Disability Agency	Aging and/or Disability Agency	Aging and/or Disability Agency	Aging and/or Disability Agency	Medicaid Agency	Medicaid Agency
<b>Ohio</b>	Aging and/or Disability Agency	Aging and/or Disability Agency		Aging and/or Disability Agency	Aging and/or Disability Agency	Aging and/or Disability Agency		Aging and/or Disability Agency		Aging and/or Disability Agency	Aging and/or Disability Agency		Aging and/or Disability Agency	Aging and/or Disability Agency			Aging and/or Disability Agency	Aging and/or Disability Agency	Aging and/or Disability Agency
<b>Oklahoma</b>	Aging and/or Disability Agency	Aging and/or Disability Agency		Aging and/or Disability Agency	Aging and/or Disability Agency	Aging and/or Disability Agency	Unknown	Aging and/or Disability Agency		Aging and/or Disability Agency	Aging and/or Disability Agency	Unknown	Aging and/or Disability Agency	Aging and/or Disability Agency	Aging and/or Disability Agency	Aging and/or Disability Agency	Aging and/or Disability Agency	Aging and/or Disability Agency	Aging and/or Disability Agency

(Continued)

	Independent Living	Information and Referral	Kinship Care	Legal Assistance Development	Long-Term Care Ombudsman (In-Home Services)	Long-Term Care Ombudsman (LTC Facility)	Low Income Home Energy Assistance Program (LIHEAP)	Transportation	Personal Care	Public Guardianship	Respite	Senior Centers	Senior Community Service Employment Program (SCSEP)	Senior Farmers' Market Nutrition Program (SFMNP)	Senior Medicare Patrol (SMP)	State Health Insurance Assistance Program (SHIP)	The Emergency Food Assistance Program (TEFAP)	Traumatic Brain Injury Grant Program	Veterans-Directed Home and Community Based Services	Vocational Rehabilitation	Workforce Investment Act Programs
Unknown	Aging and/or Disability Agency			Unknown	Aging and/or Disability Agency		Aging and/or Disability Agency	Aging and/or Disability Agency	Aging and/or Disability Agency	Aging and/or Disability Agency	Aging and/or Disability Agency	Aging and/or Disability Agency		Not Provided	Aging and/or Disability Agency		Aging and/or Disability Agency	Not Provided		Aging and/or Disability Agency	
Aging and/or Disability Agency	Aging and/or Disability Agency	Unknown	Aging and/or Disability Agency	Not Provided	Aging and/or Disability Agency		Aging and/or Disability Agency	Aging and/or Disability Agency	Aging and/or Disability Agency	Aging and/or Disability Agency	Aging and/or Disability Agency	Aging and/or Disability Agency	Aging and/or Disability Agency	Aging and/or Disability Agency	Aging and/or Disability Agency		Not Provided	Aging and/or Disability Agency		Aging and/or Disability Agency	
Unknown	Aging and/or Disability Agency		Aging and/or Disability Agency	Not Provided	Aging and/or Disability Agency		Aging and/or Disability Agency	Aging and/or Disability Agency	Unknown	Aging and/or Disability Agency		Aging and/or Disability Agency	Aging and/or Disability Agency	Aging and/or Disability Agency	Aging and/or Disability Agency	Not Provided	Medicaid Agency	Aging and/or Disability Agency	Aging and/or Disability Agency	Unknown	
Aging and/or Disability Agency	Aging and/or Disability Agency	Unknown	Aging and/or Disability Agency	Aging and/or Disability Agency	Aging and/or Disability Agency	Aging and/or Disability Agency	Aging and/or Disability Agency	Aging and/or Disability Agency	Unknown	Aging and/or Disability Agency	Aging and/or Disability Agency	Aging and/or Disability Agency	Aging and/or Disability Agency	Aging and/or Disability Agency	Aging and/or Disability Agency	Aging and/or Disability Agency	Not Provided	Unknown	Unknown	Unknown	Unknown
	Aging and/or Disability Agency	Aging and/or Disability Agency	Aging and/or Disability Agency	Aging and/or Disability Agency	Aging and/or Disability Agency			Medicaid Agency	Aging and/or Disability Agency	Aging and/or Disability Agency	Not Provided				Aging and/or Disability Agency	Aging and/or Disability Agency	Aging and/or Disability Agency	Aging and/or Disability Agency			
Unknown	Aging and/or Disability Agency	Unknown	Aging and/or Disability Agency	Not Provided	Aging and/or Disability Agency		Aging and/or Disability Agency; Medicaid Agency	Aging and/or Disability Agency; Medicaid Agency	Unknown	Aging and/or Disability Agency; Medicaid Agency	Aging and/or Disability Agency			Aging and/or Disability Agency	Aging and/or Disability Agency		Medicaid Agency	Unknown			
Unknown	Aging and/or Disability Agency	Not Provided	Aging and/or Disability Agency	Not Provided	Aging and/or Disability Agency	State Social Service Agency	Aging and/or Disability Agency	Not Provided	Not Provided	Aging and/or Disability Agency	Aging and/or Disability Agency	Aging and/or Disability Agency	Not Provided	Aging and/or Disability Agency	State Insurance Department/Agency	Unknown		Unknown	State Education Agency	State Labor Agency	
Aging and/or Disability Agency	Aging and/or Disability Agency	Aging and/or Disability Agency	Aging and/or Disability Agency	Unknown	Aging and/or Disability Agency	Unknown	Aging and/or Disability Agency	Aging and/or Disability Agency	Unknown	Aging and/or Disability Agency	Unknown	Aging and/or Disability Agency	Aging and/or Disability Agency	Aging and/or Disability Agency	Aging and/or Disability Agency	Unknown	Not Provided	Not Provided	Unknown	Unknown	
	Aging and/or Disability Agency	Aging and/or Disability Agency	Aging and/or Disability Agency	Not Provided	Aging and/or Disability Agency		Aging and/or Disability Agency	Aging and/or Disability Agency	Aging and/or Disability Agency	Aging and/or Disability Agency	Not Provided			Aging and/or Disability Agency	Aging and/or Disability Agency	Unknown		Aging and/or Disability Agency			
	Aging and/or Disability Agency	Aging and/or Disability Agency	Aging and/or Disability Agency	Not Provided	Aging and/or Disability Agency	Unknown	Aging and/or Disability Agency	Aging and/or Disability Agency	Unknown	Aging and/or Disability Agency	Aging and/or Disability Agency	Aging and/or Disability Agency	Unknown	Aging and/or Disability Agency	Aging and/or Disability Agency	Unknown	Unknown	Aging and/or Disability Agency			
Unknown	Aging and/or Disability Agency		Aging and/or Disability Agency	Not Provided	Aging and/or Disability Agency		Aging and/or Disability Agency	Aging and/or Disability Agency	Unknown	Aging and/or Disability Agency	Aging and/or Disability Agency	Aging and/or Disability Agency	Aging and/or Disability Agency	Aging and/or Disability Agency	Aging and/or Disability Agency	Unknown	Medicaid Agency	Aging and/or Disability Agency	Unknown		
Aging and/or Disability Agency	Aging and/or Disability Agency	Aging and/or Disability Agency	Aging and/or Disability Agency	Not Provided	Aging and/or Disability Agency		Aging and/or Disability Agency	Aging and/or Disability Agency	Aging and/or Disability Agency	Aging and/or Disability Agency	Aging and/or Disability Agency	Aging and/or Disability Agency	Aging and/or Disability Agency	Aging and/or Disability Agency				Unknown	Aging and/or Disability Agency	Unknown	
	Aging and/or Disability Agency	Not Provided	Aging and/or Disability Agency	Not Provided	Aging and/or Disability Agency			Medicaid Agency		Aging and/or Disability Agency	Aging and/or Disability Agency	Aging and/or Disability Agency	Not Provided					Not Provided			
Aging and/or Disability Agency	Aging and/or Disability Agency		Aging and/or Disability Agency	Aging and/or Disability Agency	Aging and/or Disability Agency	Aging and/or Disability Agency	Aging and/or Disability Agency	Aging and/or Disability Agency		Aging and/or Disability Agency	Aging and/or Disability Agency	Aging and/or Disability Agency	Aging and/or Disability Agency	Not Provided					Aging and/or Disability Agency		
	Aging and/or Disability Agency	Aging and/or Disability Agency	Aging and/or Disability Agency	Not Provided	Aging and/or Disability Agency		Aging and/or Disability Agency	Aging and/or Disability Agency	Aging and/or Disability Agency	Aging and/or Disability Agency			Aging and/or Disability Agency		Unknown				Aging and/or Disability Agency		

**Table 11: State Agencies Providing Federally-Funded, Non-Medicaid Programs/Services for Older Adults**

	Adult Day Health (Includes Health Component)	Adult Day Social (Does Not Include Health Component)	Adult Protective Services	Aging and Disability Resource Center	Alzheimer's Support Programs	Case Management	Child and Adult Care Food Program (CACFP)	Chore	Commodity Supplemental Food Program (CSFP)	Congregate Meals	Chronic Disease Self-Management, Prevention, and Health Promotion	Disability Representative Payee	Elder Abuse Prevention	Family Caregiver Support	Guardianship (for Adults)	Guardianship (for People with Disabilities)	Home Delivered Meals	Homemaker
<b>Oregon</b>			Aging and/or Disability Agency	Aging and/or Disability Agency	Not Provided	Aging and/or Disability Agency	Not Provided	Not Provided	Not Provided	Aging and/or Disability Agency	Aging and/or Disability Agency	Not Provided	Aging and/or Disability Agency	Aging and/or Disability Agency	Not Provided	Not Provided	Aging and/or Disability Agency	Aging and/or Disability Agency
<b>Pennsylvania</b>	Aging and/or Disability Agency	Aging and/or Disability Agency	Aging and/or Disability Agency	Aging and/or Disability Agency	Aging and/or Disability Agency	Aging and/or Disability Agency	Medicaid Agency	Aging and/or Disability Agency	Aging and/or Disability Agency	Aging and/or Disability Agency	Aging and/or Disability Agency	Not Provided	Aging and/or Disability Agency	Aging and/or Disability Agency	Aging and/or Disability Agency	Aging and/or Disability Agency	Aging and/or Disability Agency	Aging and/or Disability Agency
<b>Rhode Island</b>	Aging and/or Disability Agency	Aging and/or Disability Agency	Aging and/or Disability Agency	Aging and/or Disability Agency	Aging and/or Disability Agency	Aging and/or Disability Agency	Unknown	Not Provided	Unknown	Aging and/or Disability Agency	Aging and/or Disability Agency	Unknown	Aging and/or Disability Agency	Aging and/or Disability Agency	Not Provided	Unknown	Aging and/or Disability Agency	Aging and/or Disability Agency
<b>South Carolina</b>		Not Provided		Aging and/or Disability Agency	Aging and/or Disability Agency	Not Provided		Unknown		Aging and/or Disability Agency	Aging and/or Disability Agency	Unknown	Aging and/or Disability Agency	Aging and/or Disability Agency	Not Provided	Not Provided	Aging and/or Disability Agency	Aging and/or Disability Agency
<b>South Dakota</b>	Not Provided	Aging and/or Disability Agency	Aging and/or Disability Agency	Aging and/or Disability Agency	Not Provided	Aging and/or Disability Agency	Unknown	Not Provided	Unknown	Aging and/or Disability Agency	Aging and/or Disability Agency	Unknown	Aging and/or Disability Agency	Aging and/or Disability Agency	Aging and/or Disability Agency	Aging and/or Disability Agency	Aging and/or Disability Agency	Aging and/or Disability Agency
<b>Tennessee</b>	Unknown	Unknown		Aging and/or Disability Agency	Aging and/or Disability Agency	Aging and/or Disability Agency	Aging and/or Disability Agency	Aging and/or Disability Agency	Aging and/or Disability Agency	Aging and/or Disability Agency	Aging and/or Disability Agency	Aging and/or Disability Agency	Aging and/or Disability Agency	Aging and/or Disability Agency			Aging and/or Disability Agency	Aging and/or Disability Agency
<b>Texas</b>	Aging and/or Disability Agency	Not Provided	Aging and/or Disability Agency	Aging and/or Disability Agency		Aging and/or Disability Agency	Aging and/or Disability Agency	Aging and/or Disability Agency	Aging and/or Disability Agency	Aging and/or Disability Agency	Aging and/or Disability Agency	Aging and/or Disability Agency	Aging and/or Disability Agency	Aging and/or Disability Agency	Aging and/or Disability Agency	Aging and/or Disability Agency	Aging and/or Disability Agency	Aging and/or Disability Agency
<b>Utah</b>	Unknown	Unknown	Aging and/or Disability Agency	Not Provided	Aging and/or Disability Agency	Aging and/or Disability Agency	Unknown	Aging and/or Disability Agency	Not Provided	Aging and/or Disability Agency	Aging and/or Disability Agency, Medicaid Agency	Unknown	Aging and/or Disability Agency	Aging and/or Disability Agency	Unknown	Unknown	Aging and/or Disability Agency	Aging and/or Disability Agency
<b>Vermont</b>				Aging and/or Disability Agency	Aging and/or Disability Agency	Aging and/or Disability Agency	Aging and/or Disability Agency	Aging and/or Disability Agency	Aging and/or Disability Agency	Aging and/or Disability Agency	Aging and/or Disability Agency, Unknown	Aging and/or Disability Agency	Aging and/or Disability Agency	Aging and/or Disability Agency			Aging and/or Disability Agency	Aging and/or Disability Agency
<b>Virginia</b>																		
<b>Washington</b>	Aging and/or Disability Agency	Aging and/or Disability Agency	Aging and/or Disability Agency	Aging and/or Disability Agency	Aging and/or Disability Agency	Aging and/or Disability Agency	Not Provided	Aging and/or Disability Agency	Not Provided	Aging and/or Disability Agency	Aging and/or Disability Agency	Unknown	Aging and/or Disability Agency	Aging and/or Disability Agency	Not Provided	Not Provided	Aging and/or Disability Agency	Not Provided
<b>West Virginia</b>																		
<b>Wisconsin</b>	Not Provided	Not Provided	Not Provided	Not Provided	Not Provided	Not Provided	Not Provided	Not Provided	Not Provided	Not Provided	Not Provided	Not Provided	Not Provided	Not Provided	Not Provided	Not Provided	Not Provided	Not Provided
<b>Wyoming</b>	Aging and/or Disability Agency, Medicaid Agency	Aging and/or Disability Agency, Medicaid Agency		Aging and/or Disability Agency	Aging and/or Disability Agency	Aging and/or Disability Agency, Medicaid Agency		Aging and/or Disability Agency, Medicaid Agency		Aging and/or Disability Agency	Aging and/or Disability Agency		Aging and/or Disability Agency	Aging and/or Disability Agency			Aging and/or Disability Agency	Aging and/or Disability Agency, Medicaid Agency

(Continued)

	Independent Living	Information and Referral	Kinship Care	Legal Assistance Development	Long-Term Care Ombudsman (In-Home Services)	Long-Term Care Ombudsman (LTC Facility)	Low Income Home Energy Assistance Program (LIHEAP)	Transportation	Personal Care	Public Guardianship	Respite	Senior Centers	Senior Community Service Employment Program (SCSEP)	Senior Farmers' Market Nutrition Program (SFMNP)	Senior Medicare Patrol (SMP)	State Health Insurance Assistance Program (SHIP)	The Emergency Food Assistance Program (TEFAP)	Traumatic Brain Injury Grant Program	Veterans-Directed Home and Community Based Services	Vocational Rehabilitation	Workforce Investment Act Programs
Aging and/or Disability Agency	Aging and/or Disability Agency	Not Provided	Aging and/or Disability Agency	Not Provided	Aging and/or Disability Agency	Not Provided	Aging and/or Disability Agency	Aging and/or Disability Agency	Not Provided	Aging and/or Disability Agency	Aging and/or Disability Agency	Aging and/or Disability Agency	Aging and/or Disability Agency	Aging and/or Disability Agency	Not Provided	Not Provided	Not Provided	Not Provided	Not Provided	Not Provided	Not Provided
Aging and/or Disability Agency	Aging and/or Disability Agency		Aging and/or Disability Agency	Aging and/or Disability Agency	Aging and/or Disability Agency	Medicaid Agency	Aging and/or Disability Agency	Aging and/or Disability Agency	Aging and/or Disability Agency	Aging and/or Disability Agency	Aging and/or Disability Agency	Aging and/or Disability Agency	Not Provided	Aging and/or Disability Agency	Aging and/or Disability Agency			Aging and/or Disability Agency			
Unknown	Aging and/or Disability Agency	Aging and/or Disability Agency	Aging and/or Disability Agency	Aging and/or Disability Agency	Aging and/or Disability Agency	Unknown	Aging and/or Disability Agency	Aging and/or Disability Agency	Not Provided	Aging and/or Disability Agency	Aging and/or Disability Agency	Unknown	Unknown	Aging and/or Disability Agency	Aging and/or Disability Agency	Unknown	Unknown	Unknown	Unknown	Unknown	Unknown
Unknown	Aging and/or Disability Agency	Unknown	Aging and/or Disability Agency	Not Provided	Aging and/or Disability Agency		Aging and/or Disability Agency	Aging and/or Disability Agency	Not Provided	Aging and/or Disability Agency	Aging and/or Disability Agency	Aging and/or Disability Agency		Aging and/or Disability Agency	Aging and/or Disability Agency			Aging and/or Disability Agency			
Unknown	Aging and/or Disability Agency	Unknown	Aging and/or Disability Agency	Unknown	Aging and/or Disability Agency	Not Provided	Aging and/or Disability Agency	Aging and/or Disability Agency	Aging and/or Disability Agency	Aging and/or Disability Agency	Unknown	Unknown	Unknown	Unknown	Aging and/or Disability Agency	Not Provided	Unknown	Unknown			Aging and/or Disability Agency
	Aging and/or Disability Agency	Unknown	Aging and/or Disability Agency	Not Provided	Aging and/or Disability Agency		Aging and/or Disability Agency	Aging and/or Disability Agency	Aging and/or Disability Agency	Aging and/or Disability Agency	Aging and/or Disability Agency				Aging and/or Disability Agency			Aging and/or Disability Agency			
Aging and/or Disability Agency	Aging and/or Disability Agency	Aging and/or Disability Agency	Aging and/or Disability Agency	Aging and/or Disability Agency	Aging and/or Disability Agency	Aging and/or Disability Agency	Aging and/or Disability Agency	Aging and/or Disability Agency	Aging and/or Disability Agency	Aging and/or Disability Agency	Aging and/or Disability Agency				Aging and/or Disability Agency			Aging and/or Disability Agency			
Medicaid Agency	Aging and/or Disability Agency	Unknown	Aging and/or Disability Agency	Not Provided	Aging and/or Disability Agency	Unknown	Aging and/or Disability Agency	Aging and/or Disability Agency	Unknown	Aging and/or Disability Agency	Aging and/or Disability Agency	Aging and/or Disability Agency	Not Provided	Aging and/or Disability Agency	Aging and/or Disability Agency	Not Provided	Unknown	Aging and/or Disability Agency	Unknown	Not Provided	
Aging and/or Disability Agency	Aging and/or Disability Agency	Aging and/or Disability Agency	Aging and/or Disability Agency	Aging and/or Disability Agency	Aging and/or Disability Agency	Aging and/or Disability Agency	Aging and/or Disability Agency	Aging and/or Disability Agency		Aging and/or Disability Agency	Aging and/or Disability Agency	Aging and/or Disability Agency	Aging and/or Disability Agency	Aging and/or Disability Agency	Aging and/or Disability Agency	Not Provided		Aging and/or Disability Agency (Local AAAs)	Aging and/or Disability Agency		
Aging and/or Disability Agency	Aging and/or Disability Agency	Aging and/or Disability Agency	Aging and/or Disability Agency	Not Provided	Aging and/or Disability Agency	Unknown	Aging and/or Disability Agency	Aging and/or Disability Agency	Not Provided	Aging and/or Disability Agency	Aging and/or Disability Agency	Aging and/or Disability Agency	Aging and/or Disability Agency	Not Provided	State Insurance Commissioner	Not Provided	Aging and/or Disability Agency	Aging and/or Disability Agency	Social and/or Health Services	Social and/or Health Services	
Not Provided	Not Provided	Not Provided	Not Provided			Not Provided	Not Provided	Not Provided	Not Provided	Not Provided	Not Provided	Aging and/or Disability Agency	Aging and/or Disability Agency	Not Provided	Not Provided	Not Provided	Aging and/or Disability Agency				
	Aging and/or Disability Agency	Aging and/or Disability Agency	Aging and/or Disability Agency	Aging and/or Disability Agency	Aging and/or Disability Agency		Aging and/or Disability Agency, Medicaid Agency	Aging and/or Disability Agency, Medicaid Agency		Aging and/or Disability Agency, Medicaid Agency	Aging and/or Disability Agency		Not Provided				Medicaid Agency	Not Provided			

**Table 12: State Agencies Providing Federally-Funded, Non-Medicaid Programs/Services for Individuals**

	<i>Adult Day Health (Includes Health Component)</i>	<i>Adult Day Social (Does Not Include Health Component)</i>	<i>Adult Protective Services</i>	<i>Aging and Disability Resource Center</i>	<i>Alzheimer's Support Programs</i>	<i>Case Management</i>	<i>Child and Adult Care Food Program (CACFP)</i>	<i>Chore</i>	<i>Commodity Supplemental Food Program (CSFP)</i>	<i>Congregate Meals</i>	<i>Chronic Disease Self-Management, Prevention, and Health Promotion</i>	<i>Disability Representative Payee</i>	<i>Elder Abuse Prevention</i>	<i>Family Caregiver Support</i>	<i>Guardianship (for Adults)</i>	<i>Guardianship (for People with Disabilities)</i>	<i>Home Delivered Meals</i>	<i>Homemaker</i>
<b>Alabama</b>	State Does Not Provide	State Does Not Provide	State Does Not Provide	Aging and/or Disability Agency	Aging and/or Disability Agency	Aging and/or Disability Agency	Aging and/or Disability Agency	Aging and/or Disability Agency	Aging and/or Disability Agency	Aging and/or Disability Agency	State Does Not Provide	Aging and/or Disability Agency	Aging and/or Disability Agency	State Does Not Provide	State Does Not Provide	Aging and/or Disability Agency		
<b>Alaska</b>	State Does Not Provide	Aging and/or Disability Agency	Aging and/or Disability Agency	Aging and/or Disability Agency	Aging and/or Disability Agency	Aging and/or Disability Agency	Aging and/or Disability Agency	Aging and/or Disability Agency	Aging and/or Disability Agency	Aging and/or Disability Agency	State Does Not Provide	Aging and/or Disability Agency	Aging and/or Disability Agency			Aging and/or Disability Agency	Aging and/or Disability Agency	
<b>Arizona</b>	Aging and/or Disability Agency	Aging and/or Disability Agency	Aging and/or Disability Agency	Aging and/or Disability Agency	Aging and/or Disability Agency	Aging and/or Disability Agency	State Does Not Provide		Aging and/or Disability Agency	Aging and/or Disability Agency			Aging and/or Disability Agency			Aging and/or Disability Agency	Aging and/or Disability Agency	
<b>Arkansas</b>																		
<b>California</b>				Aging and/or Disability Agency	Aging and/or Disability Agency				State Does Not Provide	Aging and/or Disability Agency		Aging and/or Disability Agency	Aging and/or Disability Agency			Aging and/or Disability Agency	Aging and/or Disability Agency	
<b>Colorado</b>	State Does Not Provide	State Does Not Provide	Aging and/or Disability Agency	Aging and/or Disability Agency	Aging and/or Disability Agency				State Does Not Provide									
<b>Connecticut</b>			DSS	Aging	Aging	Aging		Aging		Aging	Aging		Aging	Aging			Aging	Aging
<b>Delaware</b>	Aging and/or Disability Agency	Aging and/or Disability Agency	Umbrella HHS Agency	Aging and/or Disability Agency	Aging and/or Disability Agency	Aging and/or Disability Agency	Other	Aging and/or Disability Agency	Other	Aging and/or Disability Agency	Aging and/or Disability Agency	State Does Not Provide	Aging and/or Disability Agency	Aging and/or Disability Agency		Aging and/or Disability Agency	Aging and/or Disability Agency	
<b>District of Columbia</b>	Medicaid Agency	State Does Not Provide	State Does Not Provide	Aging and/or Disability Agency	Medicaid Agency	Medicaid Agency	Medicaid Agency	Medicaid Agency	Aging and/or Disability Agency	Aging and/or Disability Agency	Aging and/or Disability Agency	Medicaid Agency	Aging and/or Disability Agency	Aging and/or Disability Agency	Medicaid Agency	Medicaid Agency	Aging and/or Disability Agency	State Does Not Provide
<b>Florida</b>		Aging and/or Disability Agency, Medicaid Agency	Aging and/or Disability Agency	Aging and/or Disability Agency		Aging and/or Disability Agency, Medicaid Agency	Aging and/or Disability Agency	Aging and/or Disability Agency	Aging and/or Disability Agency	Aging and/or Disability Agency	Aging and/or Disability Agency	Aging and/or Disability Agency	Aging and/or Disability Agency	Aging and/or Disability Agency	Aging and/or Disability Agency	Aging and/or Disability Agency	Aging and/or Disability Agency, Medicaid Agency	Aging and/or Disability Agency, Medicaid Agency
<b>Georgia</b>	Aging and/or Disability Agency		Aging and/or Disability Agency	Aging and/or Disability Agency	Aging and/or Disability Agency	Aging and/or Disability Agency	Aging and/or Disability Agency	Aging and/or Disability Agency	Aging and/or Disability Agency	Aging and/or Disability Agency	Aging and/or Disability Agency	Aging and/or Disability Agency	Aging and/or Disability Agency	Aging and/or Disability Agency	Aging and/or Disability Agency	Aging and/or Disability Agency	Aging and/or Disability Agency	Aging and/or Disability Agency
<b>Hawaii</b>																		
<b>Idaho</b>	Medicaid Agency		Aging and/or Disability Agency	Aging and/or Disability Agency	Aging and/or Disability Agency	Medicaid Agency		Medicaid Agency		State Does Not Provide	Aging and/or Disability Agency		Aging and/or Disability Agency	Aging and/or Disability Agency		Aging and/or Disability Agency, Medicaid Agency	Medicaid Agency	
<b>Illinois</b>																		
<b>Indiana</b>	State Does Not Provide	Aging and/or Disability Agency	Aging and/or Disability Agency	Aging and/or Disability Agency	State Does Not Provide	Aging and/or Disability Agency		Aging and/or Disability Agency		Aging and/or Disability Agency	Aging and/or Disability Agency		Aging and/or Disability Agency	Aging and/or Disability Agency		Aging and/or Disability Agency	Aging and/or Disability Agency	
<b>Iowa</b>				Aging and/or Disability Agency	State Does Not Provide	Aging and/or Disability Agency		Aging and/or Disability Agency		Aging and/or Disability Agency	Aging and/or Disability Agency	State Does Not Provide	Aging and/or Disability Agency	Aging and/or Disability Agency	State Does Not Provide	State Does Not Provide	Aging and/or Disability Agency	Aging and/or Disability Agency
<b>Kansas (Medicaid)</b>	Aging and/or Disability Agency	Aging and/or Disability Agency		Aging and/or Disability Agency	Aging and/or Disability Agency	Aging and/or Disability Agency		Aging and/or Disability Agency		Aging and/or Disability Agency	Aging and/or Disability Agency	Aging and/or Disability Agency	Aging and/or Disability Agency			Aging and/or Disability Agency	Aging and/or Disability Agency	
<b>Kansas (Aging/Disab)</b>	State Does Not Provide			Aging and/or Disability Agency				State Does Not Provide		Aging and/or Disability Agency	Aging and/or Disability Agency	Aging and/or Disability Agency	Aging and/or Disability Agency			Aging and/or Disability Agency	Aging and/or Disability Agency	
<b>Kentucky</b>				Aging and/or Disability Agency	Aging and/or Disability Agency	Aging and/or Disability Agency				Aging and/or Disability Agency		State Does Not Provide		Aging and/or Disability Agency	Aging and/or Disability Agency			
<b>Louisiana</b>																		

with Physical Disabilities

	Independent Living	Information and Referral	Kinship Care	Legal Assistance Development	Long-Term Care Ombudsman (In-Home Services)	Long-Term Care Ombudsman (LTC Facility)	Low Income Home Energy Assistance Program (LIHEAP)	Transportation	Personal Care	Public Guardianship	Respite	Senior Centers	Senior Community Service Employment Program (SCSEEP)	Senior Farmers' Market Nutrition Program (SFMNP)	Senior Medicare Patrol (SMP)	State Health Insurance Assistance Program (SHIP)	The Emergency Food Assistance Program (TEFAP)	Traumatic Brain Injury Grant Program	Veterans-Directed Home and Community Based Services	Vocational Rehabilitation	Workforce Investment Act Programs
State Does Not Provide	Aging and/or Disability Agency				Aging and/or Disability Agency	Aging and/or Disability Agency	State Does Not Provide	Aging and/or Disability Agency		Aging and/or Disability Agency	Aging and/or Disability Agency	Aging and/or Disability Agency		Aging and/or Disability Agency	Aging and/or Disability Agency				Aging and/or Disability Agency	Aging and/or Disability Agency	
	Aging and/or Disability Agency		Aging and/or Disability Agency	State Does Not Provide			Aging and/or Disability Agency	Aging and/or Disability Agency		Aging and/or Disability Agency	Aging and/or Disability Agency; State Does Not Provide			Aging and/or Disability Agency	Aging and/or Disability Agency		Aging and/or Disability Agency	State Does Not Provide			
Aging and/or Disability Agency	Aging and/or Disability Agency	Aging and/or Disability Agency	Aging and/or Disability Agency		Aging and/or Disability Agency	Aging and/or Disability Agency	Aging and/or Disability Agency	Aging and/or Disability Agency		Aging and/or Disability Agency	Aging and/or Disability Agency	Aging and/or Disability Agency		Aging and/or Disability Agency	Aging and/or Disability Agency	Aging and/or Disability Agency	Aging and/or Disability Agency	Aging and/or Disability Agency			Aging and/or Disability Agency
					Aging and/or Disability Agency																
	Aging and/or Disability Agency		Aging and/or Disability Agency	State Does Not Provide	Aging and/or Disability Agency		Aging and/or Disability Agency	Aging and/or Disability Agency		Aging and/or Disability Agency	Aging and/or Disability Agency	Aging and/or Disability Agency			Aging and/or Disability Agency				State Does Not Provide		
				State Does Not Provide	State Does Not Provide														State Does Not Provide		
	Aging	Aging	Aging		Aging	DSS	Aging	Aging		Aging	Aging	Aging	DSS	Aging	Aging	DSS	DSS	Aging	DORS		
Other	Aging and/or Disability Agency	Aging and/or Disability Agency	Aging and/or Disability Agency	Umbrella HHS Agency	Umbrella HHS Agency	Other	Aging and/or Disability Agency	Aging and/or Disability Agency		Aging and/or Disability Agency	Other	Aging and/or Disability Agency	State Does Not Provide	Aging and/or Disability Agency	Other	Other	State Does Not Provide	State Does Not Provide	Other	Other	
State Does Not Provide	Aging and/or Disability Agency	Medicaid Agency	State Does Not Provide	Medicaid Agency	Medicaid Agency	State Does Not Provide	Aging and/or Disability Agency			Medicaid Agency	Aging and/or Disability Agency	State Does Not Provide	Aging and/or Disability Agency	Aging and/or Disability Agency	Aging and/or Disability Agency	Medicaid Agency	State Does Not Provide	Aging and/or Disability Agency	Aging and/or Disability Agency; Medicaid Agency	Aging and/or Disability Agency	
	Aging and/or Disability Agency		Aging and/or Disability Agency		Aging and/or Disability Agency	Aging and/or Disability Agency	Aging and/or Disability Agency; Medicaid Agency	Aging and/or Disability Agency; Medicaid Agency	Aging and/or Disability Agency	Aging and/or Disability Agency; Medicaid Agency	Aging and/or Disability Agency	Aging and/or Disability Agency	Aging and/or Disability Agency								
	Aging and/or Disability Agency	Aging and/or Disability Agency	Aging and/or Disability Agency	Aging and/or Disability Agency	Aging and/or Disability Agency	Medicaid Agency	Aging and/or Disability Agency	Aging and/or Disability Agency	Aging and/or Disability Agency	Aging and/or Disability Agency	Aging and/or Disability Agency	Aging and/or Disability Agency	Medicaid Agency	Aging and/or Disability Agency	Aging and/or Disability Agency		Medicaid Agency				
	Aging and/or Disability Agency; Medicaid Agency				Aging and/or Disability Agency		Medicaid Agency	Medicaid Agency		Aging and/or Disability Agency; Medicaid Agency		Aging and/or Disability Agency		Aging and/or Disability Agency			Medicaid Agency	Aging and/or Disability Agency			
	Aging and/or Disability Agency				Aging and/or Disability Agency		Aging and/or Disability Agency	Aging and/or Disability Agency	Aging and/or Disability Agency	Aging and/or Disability Agency	Aging and/or Disability Agency	Aging and/or Disability Agency	Aging and/or Disability Agency	Medicaid Agency	Aging and/or Disability Agency		Medicaid Agency		State Does Not Provide	State Does Not Provide	Aging and/or Disability Agency
	Aging and/or Disability Agency	State Does Not Provide	Aging and/or Disability Agency	Aging and/or Disability Agency	Aging and/or Disability Agency		Aging and/or Disability Agency	Aging and/or Disability Agency	State Does Not Provide	Aging and/or Disability Agency	Aging and/or Disability Agency	Aging and/or Disability Agency		Aging and/or Disability Agency							
Aging and/or Disability Agency	Aging and/or Disability Agency	Aging and/or Disability Agency	Aging and/or Disability Agency	State Does Not Provide	Aging and/or Disability Agency		Aging and/or Disability Agency	Aging and/or Disability Agency	Aging and/or Disability Agency	Aging and/or Disability Agency	State Does Not Provide			Aging and/or Disability Agency	Aging and/or Disability Agency				State Does Not Provide	Aging and/or Disability Agency	
					Aging and/or Disability Agency	Aging and/or Disability Agency	Aging and/or Disability Agency	Aging and/or Disability Agency	Aging and/or Disability Agency	Aging and/or Disability Agency					Aging and/or Disability Agency				Aging and/or Disability Agency	State Does Not Provide	State Does Not Provide
	Aging and/or Disability Agency			State Does Not Provide	Aging and/or Disability Agency			Aging and/or Disability Agency	Aging and/or Disability Agency	Aging and/or Disability Agency					State Does Not Provide	Aging and/or Disability Agency			Aging and/or Disability Agency	State Does Not Provide	

**Table 12: State Agencies Providing Federally-Funded, Non-Medicaid Programs/Services for Individuals**

	Adult Day Health (Includes Health Component)	Adult Day Social (Does Not Include Health Component)	Adult Protective Services	Aging and Disability Resource Center	Alzheimer's Support Programs	Case Management	Child and Adult Care Food Program (CACFP)	Chore	Commodity Supplemental Food Program (CSFP)	Congregate Meals	Chronic Disease Self-Management, Prevention, and Health Promotion	Disability Representative Payee	Elder Abuse Prevention	Family Caregiver Support	Guardianship (for Adults)	Guardianship (for People with Disabilities)	Home Delivered Meals	Homemaker
<b>Maine</b>				Aging and/or Disability Agency														
<b>Maryland</b>		State Does Not Provide		Aging and/or Disability Agency	Aging and/or Disability Agency	Aging and/or Disability Agency		Aging and/or Disability Agency	State Does Not Provide	Aging and/or Disability Agency	Aging and/or Disability Agency	Aging and/or Disability Agency	Aging and/or Disability Agency	Aging and/or Disability Agency		Aging and/or Disability Agency	Aging and/or Disability Agency	
<b>Massachusetts</b>																		
<b>Michigan</b>			Human Services	Aging and/or Disability Agency	Aging and/or Disability Agency	Aging and/or Disability Agency						Aging and/or Disability Agency		Aging and/or Disability Agency	Aging and/or Disability Agency			
<b>Minnesota</b>	State Does Not Provide	State Does Not Provide	Aging and/or Disability Agency	Aging and/or Disability Agency	State Does Not Provide	Aging and/or Disability Agency	State Does Not Provide	State Does Not Provide	State Does Not Provide	Aging and/or Disability Agency		State Does Not Provide	State Does Not Provide	Not Provided	Not Provided	Aging and/or Disability Agency	Aging and/or Disability Agency	
<b>Mississippi</b>			Aging and/or Disability Agency	Aging and/or Disability Agency														
<b>Missouri</b>	State Does Not Provide	State Does Not Provide	Aging and/or Disability Agency	Aging and/or Disability Agency	Aging and/or Disability Agency	Aging and/or Disability Agency	State Health Agency	State Does Not Provide	Aging and/or Disability Agency	Aging and/or Disability Agency		Aging and/or Disability Agency	Aging and/or Disability Agency	State Does Not Provide	State Does Not Provide	Aging and/or Disability Agency	State Does Not Provide	
<b>Montana</b>																		
<b>Nebraska</b>																		
<b>Nevada</b>				Aging and/or Disability Agency	Aging and/or Disability Agency	Aging and/or Disability Agency		Aging and/or Disability Agency		Aging and/or Disability Agency			Aging and/or Disability Agency					Aging and/or Disability Agency
<b>New Hampshire</b>	State Does Not Provide	Aging and/or Disability Agency	Aging and/or Disability Agency	Aging and/or Disability Agency	Aging and/or Disability Agency	State Does Not Provide		Aging and/or Disability Agency	Aging and/or Disability Agency		State Does Not Provide	Aging and/or Disability Agency	Aging and/or Disability Agency	Aging and/or Disability Agency		Aging and/or Disability Agency	Aging and/or Disability Agency	
<b>New Jersey</b>							Aging and/or Disability Agency	Aging and/or Disability Agency		Aging and/or Disability Agency	Aging and/or Disability Agency	Aging and/or Disability Agency	Aging and/or Disability Agency	Aging and/or Disability Agency	Aging and/or Disability Agency	Aging and/or Disability Agency	Aging and/or Disability Agency	Aging and/or Disability Agency
<b>New Mexico</b>	State Does Not Provide		Aging and/or Disability Agency	Aging and/or Disability Agency			Medicaid Agency						Aging and/or Disability Agency					
<b>New York</b>	Medicaid Agency			Aging and/or Disability Agency							Medicaid Agency							
<b>North Carolina</b>	Aging and/or Disability Agency	Aging and/or Disability Agency	Aging and/or Disability Agency	Aging and/or Disability Agency	Aging and/or Disability Agency	Aging and/or Disability Agency	Aging and/or Disability Agency	Aging and/or Disability Agency		Aging and/or Disability Agency	Aging and/or Disability Agency	Aging and/or Disability Agency	Aging and/or Disability Agency	Aging and/or Disability Agency	Aging and/or Disability Agency	Aging and/or Disability Agency		Aging and/or Disability Agency
<b>North Dakota</b>	Medicaid Agency	Medicaid Agency	Aging and/or Disability Agency	Aging and/or Disability Agency	Aging and/or Disability Agency	Medicaid Agency		Medicaid Agency		Aging and/or Disability Agency		Aging and/or Disability Agency	Aging and/or Disability Agency	Aging and/or Disability Agency		Aging and/or Disability Agency		Medicaid Agency
<b>Ohio</b>	Aging and/or Disability Agency	Aging and/or Disability Agency	Aging and/or Disability Agency	Aging and/or Disability Agency	Aging and/or Disability Agency	Aging and/or Disability Agency		Aging and/or Disability Agency	Aging and/or Disability Agency	Aging and/or Disability Agency		Aging and/or Disability Agency	Aging and/or Disability Agency	State Does Not Provide	State Does Not Provide	Aging and/or Disability Agency	Aging and/or Disability Agency	
<b>Oklahoma</b>	Aging and/or Disability Agency	Aging and/or Disability Agency		Aging and/or Disability Agency	Aging and/or Disability Agency	Aging and/or Disability Agency		Aging and/or Disability Agency	State Does Not Provide	Aging and/or Disability Agency	Aging and/or Disability Agency	Aging and/or Disability Agency	Aging and/or Disability Agency	Aging and/or Disability Agency	Aging and/or Disability Agency	Aging and/or Disability Agency	Aging and/or Disability Agency	Aging and/or Disability Agency
<b>Oregon</b>	State Does Not Provide	State Does Not Provide	State Does Not Provide	Aging and/or Disability Agency	State Does Not Provide	State Does Not Provide	State Does Not Provide	State Does Not Provide	State Does Not Provide	State Does Not Provide	State Does Not Provide	State Does Not Provide	State Does Not Provide	State Does Not Provide	State Does Not Provide	State Does Not Provide	State Does Not Provide	State Does Not Provide
<b>Pennsylvania</b>	Medicaid Agency	State Does Not Provide	Aging and/or Disability Agency	Aging and/or Disability Agency	Aging and/or Disability Agency	Aging and/or Disability Agency, Medicaid Agency	State Does Not Provide	State Does Not Provide	State Does Not Provide	State Does Not Provide	State Does Not Provide	Medicaid Agency	State Does Not Provide	State Does Not Provide	State Does Not Provide	State Does Not Provide		
<b>Rhode Island</b>				Medicaid Agency														



with Physical Disabilities (Continued)

Independent Living	Information and Referral	Kinship Care	Legal Assistance Development	Long-Term Care Ombudsman (In-Home Services)	Long-Term Care Ombudsman (LTC Facility)	Low Income Home Energy Assistance Program (LIHEAP)	Transportation	Personal Care	Public Guardianship	Respite	Senior Centers	Senior Community Service Employment Program (SCSEEP)	Senior Farmers' Market Nutrition Program (SFMNP)	Senior Medicare Patrol (SMP)	State Health Insurance Assistance Program (SHIP)	The Emergency Food Assistance Program (TEFAP)	Traumatic Brain Injury Grant Program	Veterans-Directed Home and Community Based Services	Vocational Rehabilitation	Workforce Investment Act Programs
			Aging and/or Disability Agency	Aging and/or Disability Agency	Aging and/or Disability Agency															
Aging and/or Disability Agency	Aging and/or Disability Agency			State Does Not Provide	Aging and/or Disability Agency			Aging and/or Disability Agency	Aging and/or Disability Agency	Aging and/or Disability Agency	State Does Not Provide	State Does Not Provide	State Does Not Provide	Aging and/or Disability Agency	Aging and/or Disability Agency		State Does Not Provide	Aging and/or Disability Agency		
Aging and/or Disability Agency	Aging and/or Disability Agency			Aging and/or Disability Agency	Aging and/or Disability Agency					Aging and/or Disability Agency	Aging and/or Disability Agency	Aging and/or Disability Agency		Unknown	Human Services	Unknown	Unknown	Unknown	Unknown	Unknown
Aging and/or Disability Agency	Aging and/or Disability Agency	Aging and/or Disability Agency	Aging and/or Disability Agency	Aging and/or Disability Agency	Aging and/or Disability Agency		State Does Not Provide	Aging and/or Disability Agency	Aging and/or Disability Agency	State Does Not Provide				Aging and/or Disability Agency	Aging and/or Disability Agency	Aging and/or Disability Agency	Aging and/or Disability Agency	Aging and/or Disability Agency		
	Aging and/or Disability Agency	State Does Not Provide	Aging and/or Disability Agency	State Does Not Provide	Aging and/or Disability Agency	State Social Service Agency	Aging and/or Disability Agency	State Does Not Provide	State Does Not Provide	Aging and/or Disability Agency	Aging and/or Disability Agency	Aging and/or Disability Agency	State Does Not Provide	Aging and/or Disability Agency	State Insurance Department/ Agency				State Education Agency	State Labor Agency
Aging and/or Disability Agency	Aging and/or Disability Agency			State Does Not Provide	Aging and/or Disability Agency		Aging and/or Disability Agency	Aging and/or Disability Agency	Aging and/or Disability Agency					Aging and/or Disability Agency	Aging and/or Disability Agency		State Does Not Provide	State Does Not Provide		
	Aging and/or Disability Agency			State Does Not Provide	Aging and/or Disability Agency		Aging and/or Disability Agency	Aging and/or Disability Agency	Aging and/or Disability Agency					Aging and/or Disability Agency	Aging and/or Disability Agency				Aging and/or Disability Agency	
Aging and/or Disability Agency	Aging and/or Disability Agency	Aging and/or Disability Agency	Aging and/or Disability Agency											Aging and/or Disability Agency	Aging and/or Disability Agency		Aging and/or Disability Agency	Aging and/or Disability Agency	Aging and/or Disability Agency	
	Aging and/or Disability Agency			State Does Not Provide	Aging and/or Disability Agency	Medicaid Agency								Aging and/or Disability Agency	Aging and/or Disability Agency		Medicaid Agency	State Does Not Provide		
			Aging and/or Disability Agency	State Does Not Provide	Aging and/or Disability Agency					State Does Not Provide	Aging and/or Disability Agency	State Does Not Provide	Aging and/or Disability Agency	Aging and/or Disability Agency		Medicaid Agency	Aging and/or Disability Agency			
Aging and/or Disability Agency	Aging and/or Disability Agency	Aging and/or Disability Agency	Aging and/or Disability Agency	Aging and/or Disability Agency	Aging and/or Disability Agency	Aging and/or Disability Agency	Aging and/or Disability Agency	Aging and/or Disability Agency	Aging and/or Disability Agency	Aging and/or Disability Agency	Aging and/or Disability Agency	Aging and/or Disability Agency	Aging and/or Disability Agency	Aging and/or Disability Agency	Aging and/or Disability Agency	Aging and/or Disability Agency			Aging and/or Disability Agency	
	Aging and/or Disability Agency		Aging and/or Disability Agency	State Does Not Provide	Aging and/or Disability Agency		Medicaid Agency		Aging and/or Disability Agency	Aging and/or Disability Agency	Aging and/or Disability Agency	State Does Not Provide						State Does Not Provide		
Aging and/or Disability Agency	Aging and/or Disability Agency		Aging and/or Disability Agency	Aging and/or Disability Agency	Aging and/or Disability Agency	Aging and/or Disability Agency	Aging and/or Disability Agency	Aging and/or Disability Agency	Aging and/or Disability Agency	Aging and/or Disability Agency	Aging and/or Disability Agency	Aging and/or Disability Agency	Aging and/or Disability Agency	State Does Not Provide					Aging and/or Disability Agency	
	Aging and/or Disability Agency	Aging and/or Disability Agency	Aging and/or Disability Agency	State Does Not Provide	Aging and/or Disability Agency		Aging and/or Disability Agency	Aging and/or Disability Agency	Aging and/or Disability Agency	Aging and/or Disability Agency	Aging and/or Disability Agency	Aging and/or Disability Agency	Aging and/or Disability Agency	Aging and/or Disability Agency					Aging and/or Disability Agency	
State Does Not Provide	State Does Not Provide	State Does Not Provide	State Does Not Provide	State Does Not Provide		State Does Not Provide	State Does Not Provide	State Does Not Provide	State Does Not Provide	State Does Not Provide	State Does Not Provide	State Does Not Provide	State Does Not Provide	State Does Not Provide	State Does Not Provide	State Does Not Provide	State Does Not Provide	State Does Not Provide	State Does Not Provide	State Does Not Provide
	Medicaid Agency				Aging and/or Disability Agency	Medicaid Agency		Medicaid Agency												
				Aging and/or Disability Agency	Aging and/or Disability Agency			State Does Not Provide						Aging and/or Disability Agency	Aging and/or Disability Agency					

**Table 12: State Agencies Providing Federally-Funded, Non-Medicaid Programs/Services for Individuals**

	<i>Adult Day Health (Includes Health Component)</i>	<i>Adult Day Social (Does Not Include Health Component)</i>	<i>Adult Protective Services</i>	<i>Aging and Disability Resource Center</i>	<i>Alzheimer's Support Programs</i>	<i>Case Management</i>	<i>Child and Adult Care Food Program (CACFP)</i>	<i>Chore</i>	<i>Commodity Supplemental Food Program (CSFP)</i>	<i>Congregate Meals</i>	<i>Chronic Disease Self-Management, Prevention, and Health Promotion</i>	<i>Disability Representative Payee</i>	<i>Elder Abuse Prevention</i>	<i>Family Caregiver Support</i>	<i>Guardianship (for Adults)</i>	<i>Guardianship (for People with Disabilities)</i>	<i>Home Delivered Meals</i>	<i>Homemaker</i>
<b>South Carolina</b>																		
<b>South Dakota</b>	State Does Not Provide	Aging and/or Disability Agency	Aging and/or Disability Agency	Aging and/or Disability Agency	State Does Not Provide	Aging and/or Disability Agency	State Does Not Provide	State Does Not Provide	Aging and/or Disability Agency	Aging and/or Disability Agency	Aging and/or Disability Agency	Aging and/or Disability Agency	Aging and/or Disability Agency	Aging and/or Disability Agency	Aging and/or Disability Agency	Aging and/or Disability Agency	Aging and/or Disability Agency	Aging and/or Disability Agency
<b>Tennessee</b>				Aging and/or Disability Agency	Aging and/or Disability Agency	Aging and/or Disability Agency	Aging and/or Disability Agency	Aging and/or Disability Agency	Aging and/or Disability Agency	Aging and/or Disability Agency	Aging and/or Disability Agency	Aging and/or Disability Agency	Aging and/or Disability Agency	Aging and/or Disability Agency			Aging and/or Disability Agency	Aging and/or Disability Agency
<b>Texas</b>	Aging and/or Disability Agency	State Does Not Provide		Aging and/or Disability Agency					Aging and/or Disability Agency				Aging and/or Disability Agency	Aging and/or Disability Agency	Aging and/or Disability Agency	Aging and/or Disability Agency	Aging and/or Disability Agency	Aging and/or Disability Agency
<b>Utah</b>			Aging and/or Disability Agency	State Does Not Provide	State Does Not Provide	Aging and/or Disability Agency				Aging and/or Disability Agency		Aging and/or Disability Agency						
<b>Vermont</b>			Aging and/or Disability Agency	Aging and/or Disability Agency		Aging and/or Disability Agency		Aging and/or Disability Agency	Aging and/or Disability Agency	Aging and/or Disability Agency; Don't know	Aging and/or Disability Agency	Aging and/or Disability Agency	Aging and/or Disability Agency			Aging and/or Disability Agency	Aging and/or Disability Agency	
<b>Virginia</b>																		
<b>Washington</b>	Aging and/or Disability Agency	Aging and/or Disability Agency	Aging and/or Disability Agency	Aging and/or Disability Agency	Aging and/or Disability Agency	State Does Not Provide	State Does Not Provide	State Does Not Provide	State Does Not Provide	Aging and/or Disability Agency	State Does Not Provide	Aging and/or Disability Agency	Aging and/or Disability Agency	State Does Not Provide	State Does Not Provide	Aging and/or Disability Agency	State Does Not Provide	State Does Not Provide
<b>West Virginia</b>																		
<b>Wisconsin</b>	State Does Not Provide	State Does Not Provide	State Does Not Provide	State Does Not Provide	State Does Not Provide	State Does Not Provide	State Does Not Provide	State Does Not Provide	State Does Not Provide	State Does Not Provide	State Does Not Provide	State Does Not Provide	State Does Not Provide	State Does Not Provide	State Does Not Provide	State Does Not Provide	State Does Not Provide	State Does Not Provide
<b>Wyoming</b>	Aging and/or Disability Agency; Medicaid Agency	Aging and/or Disability Agency; Medicaid Agency		Aging and/or Disability Agency	Aging and/or Disability Agency	Aging and/or Disability Agency; Medicaid Agency	Aging and/or Disability Agency; Medicaid Agency	Aging and/or Disability Agency; Medicaid Agency	Aging and/or Disability Agency	Aging and/or Disability Agency	Aging and/or Disability Agency	Aging and/or Disability Agency	Aging and/or Disability Agency			Aging and/or Disability Agency; Medicaid Agency	Aging and/or Disability Agency	

with Physical Disabilities (Continued)

	Independent Living	Information and Referral	Kinship Care	Legal Assistance Development	Long-Term Care Ombudsman (In-Home Services)	Long-Term Care Ombudsman (LTC Facility)	Low Income Home Energy Assistance Program (LIHEAP)	Transportation	Personal Care	Public Guardianship	Respite	Senior Centers	Senior Community Service Employment Program (SCSEEP)	Senior Farmers' Market Nutrition Program (SFMNP)	Senior Medicare Patrol (SMP)	State Health Insurance Assistance Program (SHIP)	The Emergency Food Assistance Program (TEFAP)	Traumatic Brain Injury Grant Program	Veterans-Directed Home and Community Based Services	Vocational Rehabilitation	Workforce Investment Act Programs
	Aging and/or Disability Agency		Aging and/or Disability Agency		Aging and/or Disability Agency	State Does Not Provide	Aging and/or Disability Agency	Aging and/or Disability Agency	Aging and/or Disability Agency	Aging and/or Disability Agency	Aging and/or Disability Agency	Aging and/or Disability Agency			Aging and/or Disability Agency				State Does Not Provide		State Does Not Provide
	Aging and/or Disability Agency		Aging and/or Disability Agency		Aging and/or Disability Agency		Aging and/or Disability Agency	Aging and/or Disability Agency	Aging and/or Disability Agency	Aging and/or Disability Agency	Aging and/or Disability Agency				Aging and/or Disability Agency				Aging and/or Disability Agency		
Aging and/or Disability Agency	Aging and/or Disability Agency	Aging and/or Disability Agency	Aging and/or Disability Agency		Aging and/or Disability Agency		Aging and/or Disability Agency	Aging and/or Disability Agency	Aging and/or Disability Agency	Aging and/or Disability Agency					Aging and/or Disability Agency				Aging and/or Disability Agency		
					Aging and/or Disability Agency						Aging and/or Disability Agency	Aging and/or Disability Agency		Aging and/or Disability Agency	Aging and/or Disability Agency			Aging and/or Disability Agency			
Aging and/or Disability Agency	Aging and/or Disability Agency	Aging and/or Disability Agency		Aging and/or Disability Agency	Aging and/or Disability Agency	Aging and/or Disability Agency	Aging and/or Disability Agency	Aging and/or Disability Agency		Aging and/or Disability Agency					Aging and/or Disability Agency	State Does Not Provide		Aging and/or Disability Agency	Aging and/or Disability Agency		
State Does Not Provide	State Does Not Provide	State Does Not Provide	State Does Not Provide	State Does Not Provide	State Does Not Provide	State Does Not Provide	Aging and/or Disability Agency	Aging and/or Disability Agency	State Does Not Provide	Aging and/or Disability Agency	State Does Not Provide	State Does Not Provide	State Does Not Provide	State Does Not Provide	State Does Not Provide	State Does Not Provide	State Does Not Provide	Aging and/or Disability Agency	State Does Not Provide	State Does Not Provide	State Does Not Provide
State Does Not Provide	State Does Not Provide	State Does Not Provide	State Does Not Provide	State Does Not Provide			State Does Not Provide	State Does Not Provide	State Does Not Provide	State Does Not Provide	State Does Not Provide	Aging and/or Disability Agency	Aging and/or Disability Agency	State Does Not Provide	State Does Not Provide	State Does Not Provide	Aging and/or Disability Agency	State Does Not Provide			
Medicaid Agency	Aging and/or Disability Agency	Aging and/or Disability Agency	Aging and/or Disability Agency	Aging and/or Disability Agency; Medicaid Agency	Aging and/or Disability Agency; Medicaid Agency		Aging and/or Disability Agency; Medicaid Agency	Aging and/or Disability Agency; Medicaid Agency		Aging and/or Disability Agency; Medicaid Agency	Aging and/or Disability Agency						Medicaid Agency				

**Table 13: Primary LTSS Medicaid Funding Authority by Target Population**

	<i>Adult Foster Care Clients</i>	<i>Individuals with Dementia/ Alzheimer's Disease</i>	<i>Assisted Living Clients</i>	<i>Individuals with Autism</i>	<i>Individuals with Intellectual/ Developmental Disabilities</i>	<i>Older Adults</i>	<i>Older Adults and Adults with Physical Disabilities</i>	<i>Adults with Physical Disabilities</i>	<i>Individuals with Severe Emotional Disturbance</i>	<i>Individuals with Traumatic Brain Injury</i>
<b>Alabama</b>					1915 (c)	1915 (c)	1915 (c)	1915 (c)		1915 (c)
<b>Alaska</b>	N/A	N/A	N/A	N/A	1915 (c)	N/A	1915 (c)	N/A	N/A	N/A
<b>Arizona</b>					MLTSS (regardless of authority)		MLTSS (regardless of authority)			
<b>Arkansas</b>	1915 (c)	1915 (c)	1915 (c)	1915 (k)	State Plan §1915 (k)	1915 (c)	1915 (c)	1915 (c)	N/A	N/A
<b>California</b>			1915 (c)		1915 (c)	1915 (c)	Medicaid State Plan Personal Care Services	Medicaid State Plan Personal Care Services		
<b>Colorado</b>	1915 (c)	N/A	1915 (c)	1915 (c)	1915 (c)	1915 (c)	1915 (c)	1915 (c)	1915 (c)	1915 (c)
<b>Connecticut</b>	SDA does not have medicaid waiver programs									
<b>Delaware</b>	N/A	MLTSS (regardless of authority)	MLTSS (regardless of authority)	1915 (c)	1915 (c)	MLTSS (regardless of authority)	MLTSS (regardless of authority)	MLTSS (regardless of authority)	N/A	MLTSS (regardless of authority)
<b>District of Columbia</b>	N/A	N/A	N/A	N/A	N/A	N/A	N/A	N/A	N/A	N/A
<b>Florida</b>			1915 (c)							
<b>Georgia</b>	N/A	1915 (c)	1915 (c)	1915 (c)	1915 (c)	1915 (c)	1915 (c)	1915 (c)	1915 (c)	1915 (c)
<b>Hawaii</b>	1915 (c)	§1115 Demonstration Program for LTSS other than MLTSS	§1115 Demonstration Program for LTSS other than MLTSS	1915 (c)	1915 (c)	§1115 Demonstration Program for LTSS other than MLTSS	§1115 Demonstration Program for LTSS other than MLTSS	§1115 Demonstration Program for LTSS other than MLTSS	§1115 Demonstration Program for LTSS other than MLTSS	§1115 Demonstration Program for LTSS other than MLTSS
<b>Idaho</b>										
<b>Illinois</b>	N/A	N/A	1915 (c)			1915 (c)		1915 (c)		1915 (c)
<b>Indiana</b>	1915 (c)		1915 (c)	1915 (c)	1915 (c)	1915 (c)	1915 (c)	1915 (c)	1915 (c)	1915 (c)
<b>Iowa</b>	N/A	1915 (c)	1915 (c)	N/A	1915 (c)	1915 (c)	1915 (c)	1915 (c)	MLTSS (regardless of authority)	1915 (c)
<b>Kansas</b>	N/A	N/A	MLTSS (regardless of authority)	MLTSS (regardless of authority)	1915 (c)	MLTSS (regardless of authority)	MLTSS (regardless of authority)	MLTSS (regardless of authority)	MLTSS (regardless of authority)	MLTSS (regardless of authority)
<b>Kansas</b>	N/A	N/A	§1115 Demonstration Program for LTSS other than MLTSS	§1115 Demonstration Program for LTSS other than MLTSS	§1115 Demonstration Program for LTSS other than MLTSS	§1115 Demonstration Program for LTSS other than MLTSS	§1115 Demonstration Program for LTSS other than MLTSS	§1115 Demonstration Program for LTSS other than MLTSS	§1115 Demonstration Program for LTSS other than MLTSS	§1115 Demonstration Program for LTSS other than MLTSS
<b>Kentucky</b>										
<b>Louisiana</b>	N/A	N/A	N/A	N/A	1915 (c)	N/A	1915 (c)	N/A	State Plan §1915 (i)	N/A
<b>Maine</b>		1915 (c)		1915 (c)	1915 (c)	1915 (c)	1915 (c)	1915 (c)		Medicaid State Plan Personal Care Services
<b>Maryland</b>		1915 (c)	1915 (c)	1915 (c)	1915 (c)	1915 (c)	1915 (c)	1915 (c)		1915 (c)

**Table 13: Primary LTSS Medicaid Funding Authority by Target Population (Continued)**

	<i>Adult Foster Care Clients</i>	<i>Individuals with Dementia/ Alzheimer's Disease</i>	<i>Assisted Living Clients</i>	<i>Individuals with Autism</i>	<i>Individuals with Intellectual/ Developmental Disabilities</i>	<i>Older Adults</i>	<i>Older Adults and Adults with Physical Disabilities</i>	<i>Adults with Physical Disabilities</i>	<i>Individuals with Severe Emotional Disturbance</i>	<i>Individuals with Traumatic Brain Injury</i>
<b>Massachusetts</b>	Medicaid State Plan Personal Care Services	1915 (c)	Medicaid State Plan Personal Care Services	1915 (c)	1915 (c)	1915 (c)	1915 (c)	1915 (c)		1915 (c)
<b>Michigan</b>	§1915 (c)	§1915 (c)	N/A	§1915(i)	§1915 (c)	§1915 (c)	§1915 (c)	§1915 (c)	§1915 (c)	§1915 (c)
<b>Minnesota</b>	1915 (c)	MLTSS (regardless of authority)	1915 (c)	N/A	1915 (c)	MLTSS (regardless of authority)	1915 (c)	1915 (c)	N/A	1915 (c)
<b>Mississippi</b>										
<b>Missouri</b>		1915 (c)	Medicaid State Plan Personal Care Services	1915 (c)	1915 (c)	1915 (c)	1915 (c)	1915 (c)		
<b>Montana</b>										
<b>Nebraska</b>										
<b>Nevada</b>			1915 (c)		1915 (c)	1915 (c)		1915 (c)		
<b>New Hampshire</b>	1915 (c)	1915 (c)	1915 (c)	N/A	1915 (c)	1915 (c)	1915 (c)	1915 (c)	N/A	1915 (c)
<b>New Jersey</b>	1915 (c)	1915 (c)	1915 (c)	1915 (c)	1915 (c)	1915 (c)	1915 (c)	1915 (c)	1915 (c)	1915 (c)
<b>New Mexico</b>	N/A	§1115 Demonstration Program for LTSS other than MLTSS	§1115 Demonstration Program for LTSS other than MLTSS	1915 (c)	1915 (c)	§1115 Demonstration Program for LTSS other than MLTSS	§1115 Demonstration Program for LTSS other than MLTSS	§1115 Demonstration Program for LTSS other than MLTSS	§1115 Demonstration Program for LTSS other than MLTSS	§1115 Demonstration Program for LTSS other than MLTSS
<b>New York</b>										
<b>North Carolina</b>	N/A		N/A	N/A	1915 (c)	N/A	1915 (c)	N/A	1915 (c)	N/A
<b>North Dakota</b>	1915 (c)	1915 (c)	Medicaid State Plan Personal Care Services	1915 (c)	1915 (c)	1915 (c)	1915 (c)	1915 (c)	N/A	1915 (c)
<b>Ohio</b>	N/A	1915 (c)	1915 (c)	N/A	1915 (c)	1915 (c)	1915 (c)	1915 (c)	N/A	1915 (c)
<b>Oklahoma</b>	N/A	N/A	1915 (c)	N/A	1915 (c)	1915 (c)	1915 (c)	1915 (c)	N/A	N/A
<b>Oregon</b>	State Plan §1915 (k)	State Plan §1915 (k)	State Plan §1915 (k)	State Plan §1915 (k)	State Plan §1915 (k)	State Plan §1915 (k)	State Plan §1915 (k)	State Plan §1915 (k)	State Plan §1915 (i)	State Plan §1915 (k)
<b>Pennsylvania</b>				§1115 Demonstration Program for LTSS other than MLTSS	1915 (c)	1915 (c)		1915 (c)		1915 (c)
<b>Rhode Island</b>	§1115 Demonstration Program for LTSS other than MLTSS		§1115 Demonstration Program for LTSS other than MLTSS							
<b>South Carolina</b>										
<b>South Dakota</b>	N/A	N/A	1915 (c)	N/A	1915 (c)	1915 (c)	1915 (c)	1915 (c)	N/A	N/A
<b>Tennessee</b>					1915 (c)		MLTSS (regardless of authority)			
<b>Texas</b>	1915 (c)	N/A	1915 (c)	N/A	N/A	1915 (c)	1915 (c)	1915 (c)	N/A	N/A
<b>Utah</b>						1915 (c)				

**Table 13: Primary LTSS Medicaid Funding Authority by Target Population (Continued)**

	<i>Adult Foster Care Clients</i>	<i>Individuals with Dementia/ Alzheimer's Disease</i>	<i>Assisted Living Clients</i>	<i>Individuals with Autism</i>	<i>Individuals with Intellectual/ Developmental Disabilities</i>	<i>Older Adults</i>	<i>Older Adults and Adults with Physical Disabilities</i>	<i>Adults with Physical Disabilities</i>	<i>Individuals with Severe Emotional Disturbance</i>	<i>Individuals with Traumatic Brain Injury</i>
<b>Vermont</b>	§1115 Demonstration Program for LTSS other than MLTSS	§1115 Demonstration Program for LTSS other than MLTSS	§1115 Demonstration Program for LTSS other than MLTSS	§1115 Demonstration Program for LTSS other than MLTSS	§1115 Demonstration Program for LTSS other than MLTSS	§1115 Demonstration Program for LTSS other than MLTSS	§1115 Demonstration Program for LTSS other than MLTSS	§1115 Demonstration Program for LTSS other than MLTSS	§1115 Demonstration Program for LTSS other than MLTSS	§1115 Demonstration Program for LTSS other than MLTSS
<b>Virginia</b>					1915 (c)		1915 (c)	1915 (c)		
<b>Washington</b>	1915 (c)	N/A	1915 (c)	N/A	1915 (c)	N/A	1915 (c)	N/A	1915 (c)	N/A
<b>West Virginia</b>					State Plan §1915 (j)					
<b>Wisconsin</b>										
<b>Wyoming</b>			1915 (c)		1915 (c)	1915 (c)	1915 (c)	1915 (c)		1915 (c)





National Association of States  
United for Aging and Disabilities  
1201 15th Street NW, Suite 350  
Washington, DC 20005  
Phone: 202-898-2578  
[www.nasud.org](http://www.nasud.org)