



# DEMONSTRATION ADDICTION SERVICES AND SUPPORTS

**Money Follows the Person**  
State of Connecticut

# Overview



- Medicaid in Connecticut
- Addressing the Need For Addiction Services and Supports in Connecticut
- Connecticut's Organizational Structure

# Medicaid in Connecticut

Over 745,000 CT Medicaid Recipients  
(over 20% of the population)

<b>Husky A</b>	Children and their parent/relative caregivers; pregnant women (income-based)	478,366 individuals
<b>Husky B</b>	Uninsured children under age 19 in higher-income households	10,652 children
<b>Husky C</b>	Individuals age 65 and older; individuals who are blind; individuals who are disabled	98,130 individuals
<b>Husky D</b>	Childless individuals age 19-64 who do not otherwise qualify for Medicaid	163,028 individuals

# Medicaid in Connecticut ...ctd

Connecticut's Medicaid budget totals over **\$6 billion annually**

- 22.7% of the State budget

In SFY 2013, **\$3.1 billion** was spent on long-term services and supports.

- 51% of Medicaid expenditures
- 7% of the Medicaid population receives LTSS with  
58% receiving Medicaid LTSS in the  
community

# Medicaid in Connecticut ...ctd

## **Accomplishments (2013):**

- Increased the percentage of hospital discharges to home and community care rather than nursing facility care from 47% in 2007 to 52%.
- Increased the percentage of LTSS expenditures to home and community rather than nursing home care from 33% in 2007 to 43%.
- Increased the percentage of nursing facility admissions returning to the community within six months of admission from 30% in 2007 to 36%.

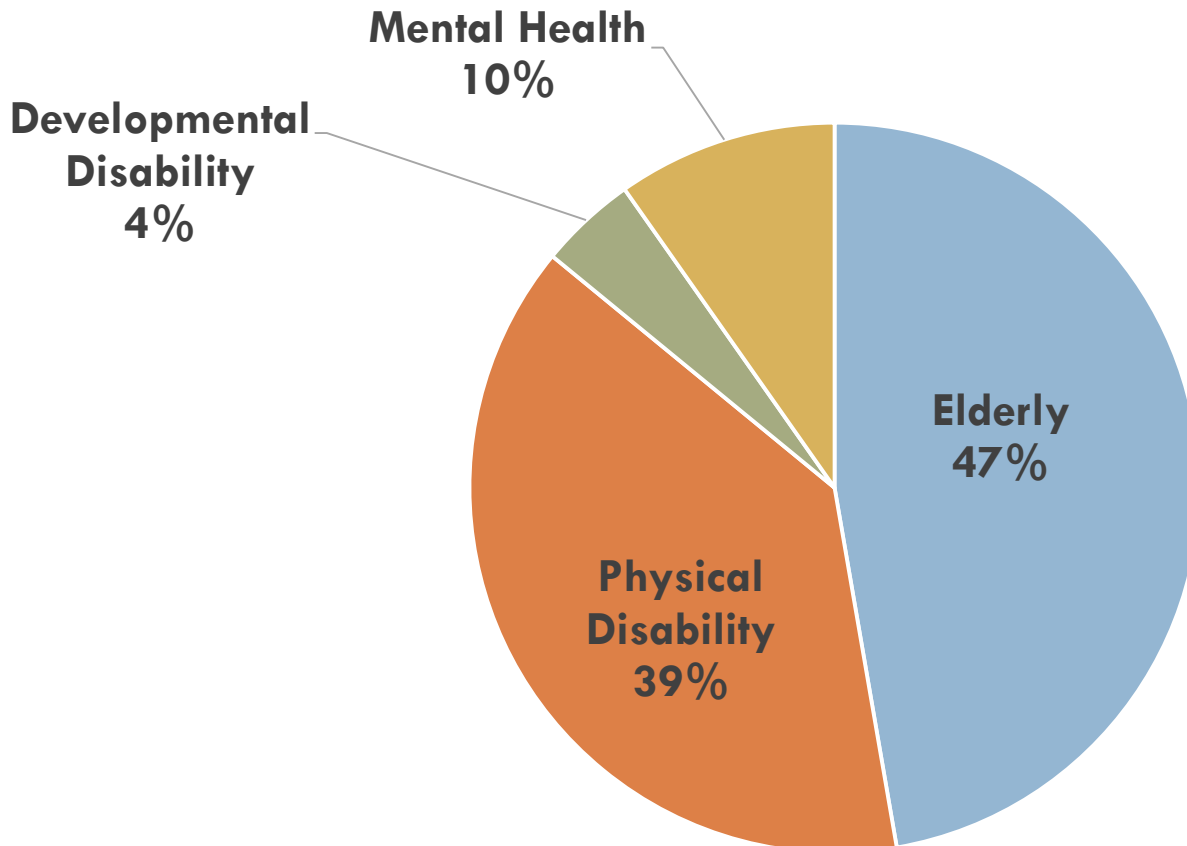


# Addressing the Need For Addiction Services and Supports in Connecticut

- Challenges within Money Follows the Person

# CT Money Follows the Person

In 2008, the Connecticut Department of Social Services received a \$56 million federal grant to fund the MFP Demonstration.



Total  
Transitions  
= 2,183

# MFP Transition Challenges



**Transition Challenges** are areas identified by MFP staff that may become or have been “roadblocks” for a consumer’s transition.

Out of 6500 cases, **567 cases (8.7%)** were determined to have challenges related to alcohol and drug abuse.



# Case Closure Prior to Transition

Out of the 567 cases, 202 cases closed prior to transitioning.

Top Reasons for Closure Prior to Transition	
Consumer Changed Their Mind	30 *(7)
Died	29
Exceeded Mental Health Needs	23
COP/Guardian Refused	22 *(4)
Exceeded Physical Needs	22

\*Alcohol and Drug-Related Cases

# Transitions

Out of the 567 cases, **267 cases** transitioned to the community.

- 48 Non-Demonstration
- 219 Demonstration

HCBS Package	
ABI	26
CHCPE	44
DDS	4
MH	32
PCA	31
State Plan (MH & Physical)	82

# Transitions ..ctd

**119 cases** that transitioned under the Demonstration completed MFP year.

**48 cases** closed during their MFP year.

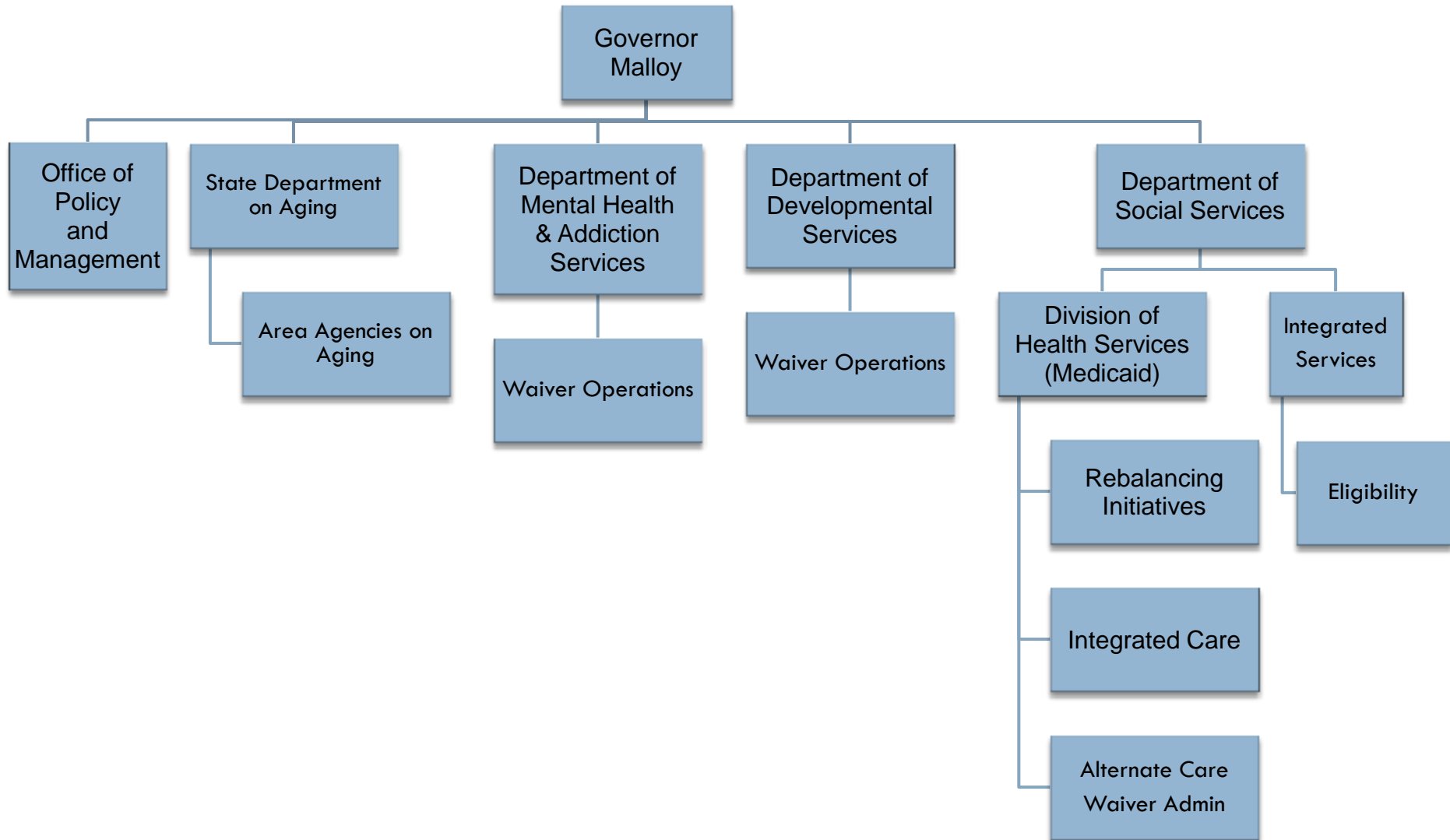
- 22 cases were re-institutionalized \*(8)
- 19 cases were deaths \*(4)

\* Alcohol and Drug-Related Cases

# Development Process

- CT's Organizational Structure

# State of Connecticut





# Demonstration Services & Supports

# Demonstration Addiction Services and Supports (DASS)

- The DASS Program is a comprehensive array of rehabilitation services that focus on **skill building** and **relapse prevention** for an individual who has a past or present primary addiction diagnosis or a co-occurring addiction and medical or psychiatric diagnosis.
- The service can begin pre-transition, approximately **1-2 months** prior to the participant's planned discharge from a nursing home and continue with the participant in the home and community for up to **6 months post discharge**.

# DASS Services

- **Community Support Service (CSS)**
  - Provides full array of Recovery Services, including assisting participants in obtaining basic supports needed to improve their likelihood of success in recovery.
- **Peer Support Specialist**
  - Promotes ongoing engagement of the participant towards recovery goals during the transition year. The PSS worker uses his/her personal experience to engage and maintain a therapeutic relationship with the participant.
- **Transitional Supportive Employment**
  - Temporary, intensive supports to assist participants in gaining competitive employment or for temporary supports to perform in a regular work setting.
- **Transportation**
  - Enables participants to gain access to community services, activities and resources specified in the plan of care. This service is offered in addition to medical and State Plan transportation services.



# Process

- Prior to discharge, an individual is screened for possible drug and/or alcohol problems using the seven question *Alcohol, Smoking and Substance Involvement Screening Test (ASSIST)* tool.
- ASSIST scores of 4-26 will receive a Level 1 individualized budget for the Addiction Services and Support Program. The Maximum Budget for this level is \$5,000 with the maximum of 75% Community Support Services (CSS).
- Assist scores of 27 or higher will receive a Level 2 individualized budget. The Maximum Budget for Level 2 is \$8,000 with the maximum of 90% CSS.
- A Recovery Treatment Plan with services and budget is developed by the participant and MFP Specialized Case Manager. The plan is sent to Allied Community Resources for implementation of the plan.
- Allied Community Resources is responsible for credentialing providers, billing and Provider Quality Assurance.

# ASSIST Screening Tool

- The ASSIST score translates to one of three outcomes:
  - 0-3 = No Intervention required
  - 4-26 = Level 1 DASS Services
  - >27 = Level 2 DASS Services

## Scoring

For each substance, add of the scores received for Questions 2-7. Results from Question 1 are not to be included in the score.

	Score	No intervention	Level 1	Level 2
a. Tobacco		0-3	4-26	27+
b. Alcohol		0-3	11-26	27+
c. Cannabis		0-3	4-26	27+
d. Cocaine		0-3	4-26	27+
e. Amphetamine		0-3	4-26	27+
f. Inhalants		0-3	4-26	27+
g. Sedatives		0-3	4-26	27+
h. Hallucinations		0-3	4-26	27+
i. Opioids		0-3	4-26	27+
j. Other drugs		0-3	4-26	27+

# Case Study

- Linda lived with less than 24 hour support prior to Nursing Home Admission
- Linda has history of alcohol abuse, diabetes and was sober while in the nursing home
- Linda's team is very concerned about her diabetes management if she starts drinking again.
- Recommendation for 24hr care
- Linda does not want 24hr care and is very committed to her sobriety

# Brochure

## Need help with entitlements?

Community Support Services can help you....

- Maintain your food stamps
- Get insurance
- Any other benefits to which you are entitled



## Need help finding resources in the Community?

Community Support Services can help you....

- Find resources to get the things you need
- Connect to treatment you might need
- Find groups and programs that will support you in the community



## Community Support Services

Case Management Services for Adults with Addiction Issues

**WISE**

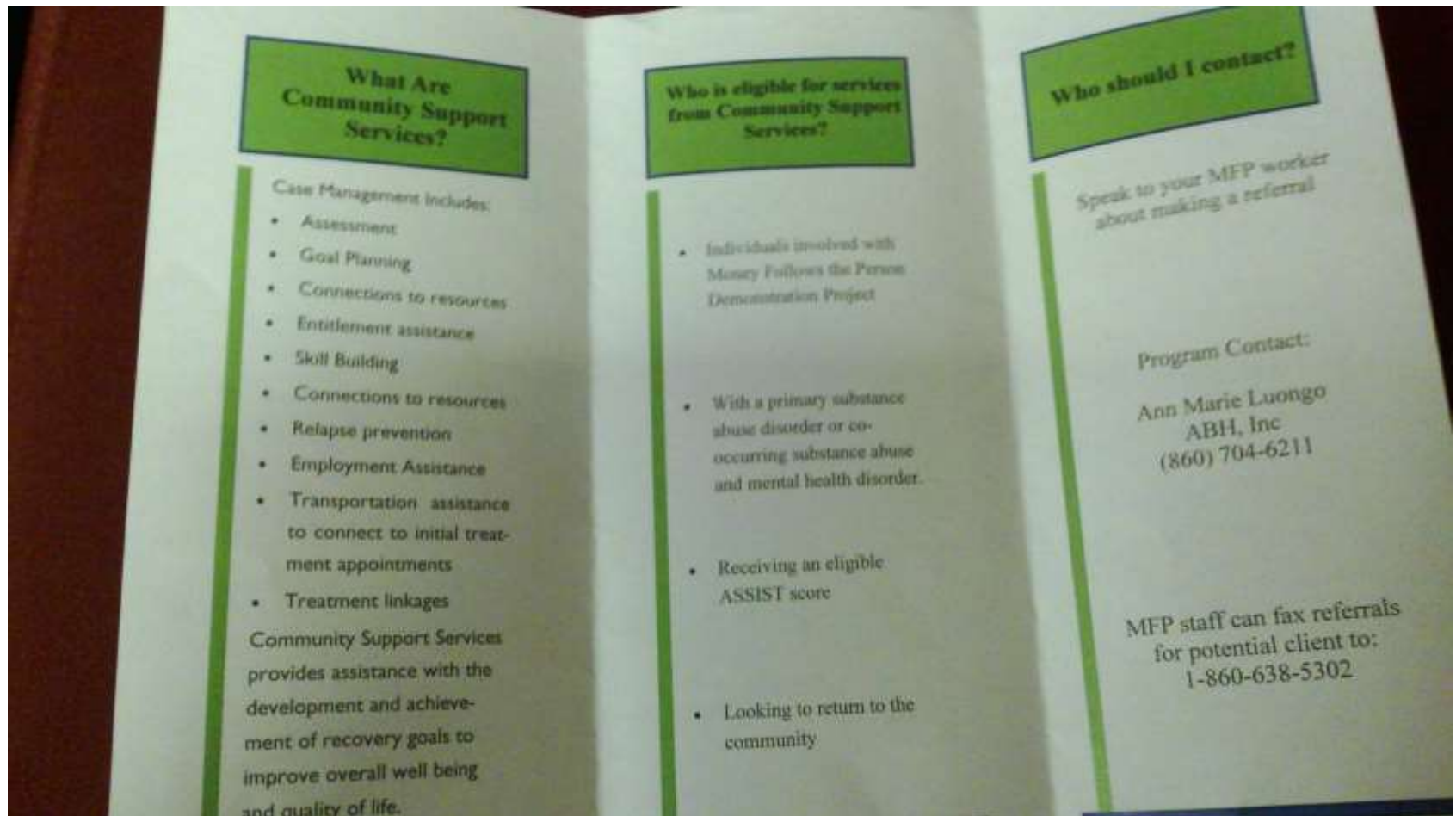
**Advanced Behavioral Health**

**213 Court Street**

**Middletown, CT 06457**

**860-704-6211**

# Brochure



# Questions



# Contact Information

---

[Deanna.clark@ct.gov](mailto:Deanna.clark@ct.gov)

[Laurel.Reagan@ct.gov](mailto:Laurel.Reagan@ct.gov)

[Dawn.lambert@ct.gov](mailto:Dawn.lambert@ct.gov)

[Siobhan.morgan@ct.gov](mailto:Siobhan.morgan@ct.gov)