



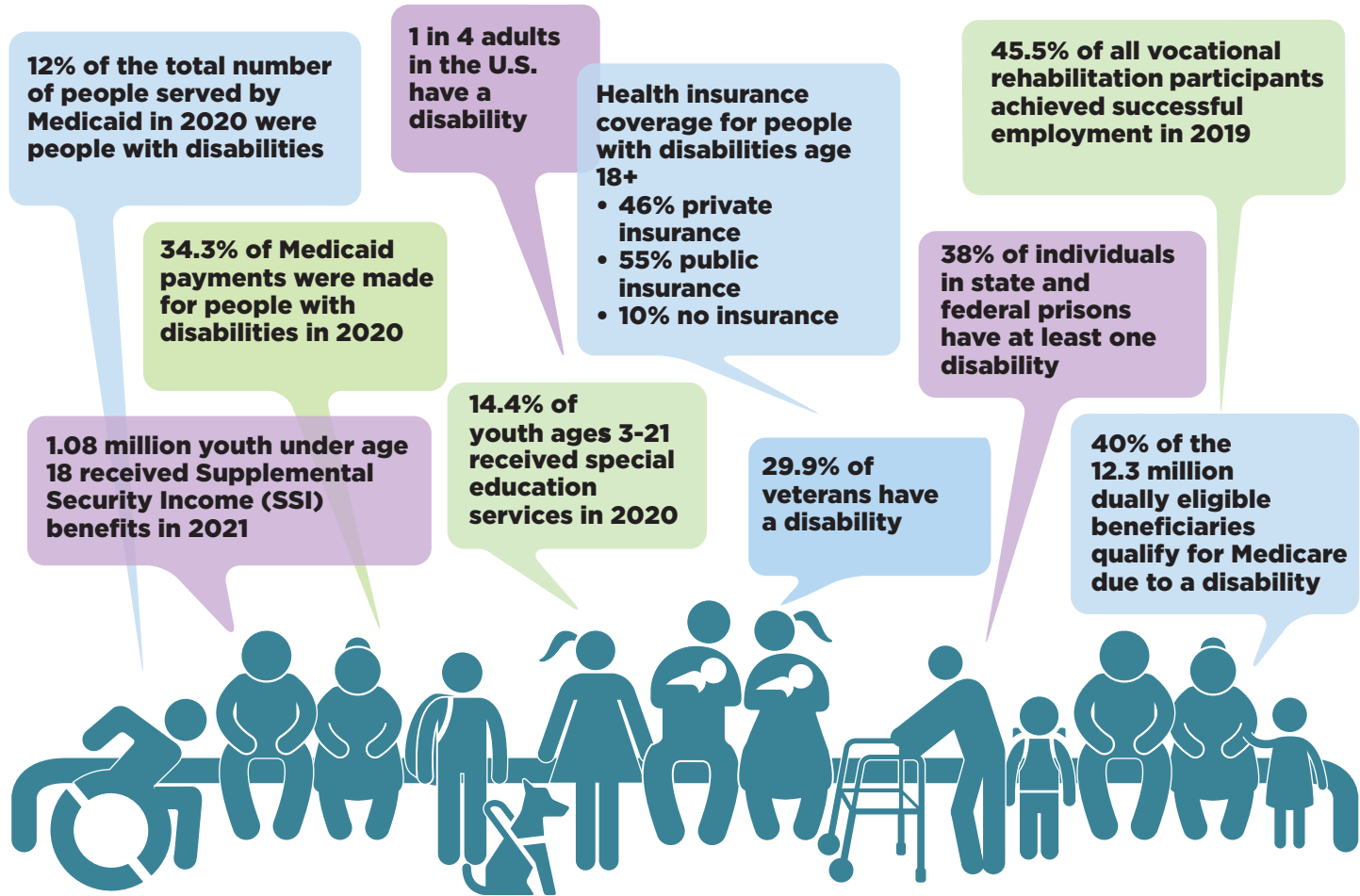
ADVANCING STATES

Leadership, innovation, collaboration for state Aging and Disability agencies.

241 18th Street S, Suite 403
Arlington, VA 22202
Phone: 202-898-2578
www.advancingstates.org
www.hcbs.org

Stay informed with us on:  

PROFILE OF AMERICANS WITH DISABILITIES



SOURCES:

CHILDREN

- Dept. of Education, *42nd Annual Report to Congress on the Implementation of the IDEA*.
- Census Bureau. "Disability Characteristics." ACS, 2019.
- Census Bureau. "Age by Disability by Poverty Status." ACS 2019.

TRANSITION AGE YOUTH

- Dept. of Education, *39th Annual Report to Congress on the Implementation of the IDEA*.
- Dept. of Education, *42nd Annual Report to Congress on the Implementation of the IDEA*.
- Cheng, L., & Shaewitz, D. *The 2019 Youth Transition Report: Outcomes for Youth and Young Adults with Disabilities*.
- Houtenville, A. and Rafal, M. *Annual Report on People with Disabilities in America: 2020*.
- Bureau of Labor Statistics, *Labor force status of the civilian noninstitutional population by sex, race, Hispanic or Latino ethnicity, age, and disability status*.

WORKING AGE ADULTS

- Paul, S., Rafal, M., & Houtenville, A. *Annual Disability Statistics Compendium: 2020*.
- Census Bureau. "Median Earnings In The Past 12 Months By Disability Status By Sex For The Civilian Noninstitutionalized Population 16 Years And Over With Earnings." 2019.
- *Annual Disability Statistics Compendium: 2020*.

OLDER ADULTS

- Advancing States Calculations based on ACS Demographic Data, 2019.
- "Physical Functioning Among People Age 65 and Older, 2019", Profile of Older Americans.

- Census Bureau, ACS. *Race by Age*, 2018.

- Ziliak, James P, and Craig Gunderson. *The State of Senior Hunger in America in 2018*.

PROFILE OF AMERICANS WITH DISABILITIES

- Medicaid Beneficiaries: Rudowitz, Robin, et al. "Medicaid Financing: The Basics." Kaiser Family Foundation.
- Total: Census Bureau, "Sex by Age by Disability Status" ACS, 2019.
- Health Insurance: *Annual Disability Statistics Compendium: 2020*.
- Vocational Rehabilitation: Rehabilitation Services Administration, *The State Vocational Rehabilitation Services Program Before and After the WIOA in 2014*.
- Youth receiving SSI: Social Security Administration, "Monthly Statistical Snapshot, April 2021".
- Special Ed Services: Office of Special Education Programs, Annual Report to Congress on the Implementation of the IDEA.
- Prisons: Dept. of Justice. "Disabilities Reported by Prisoners", 2021.
- Medicaid Payments: MACStats: Medicaid and CHIP Data Book. MACPAC, Dec. 2020.
- Disability % for Veterans: Census Bureau, "Age By Veteran Status By Poverty Status In The Past 12 Months By Disability Status For The Civilian Population 18 Years" ACS, 2019.
- Dual Eligible: Dually Eligible Beneficiaries. MACPAC.

DISABILITY IN AMERICA

Experiences Across the Lifespan



CHILDREN

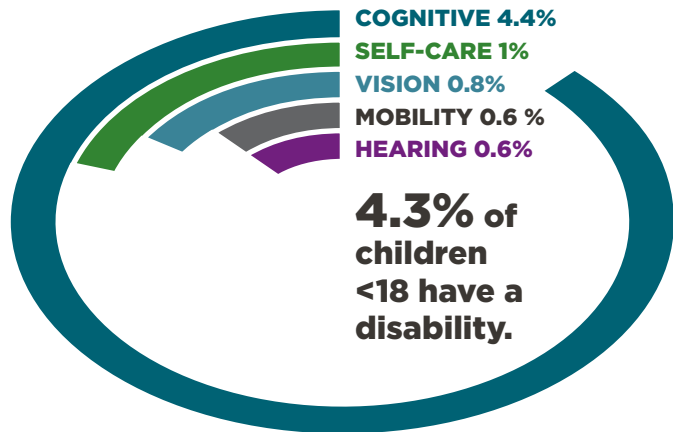
BIRTH TO 21 WITH DISABILITIES

Early Intervention

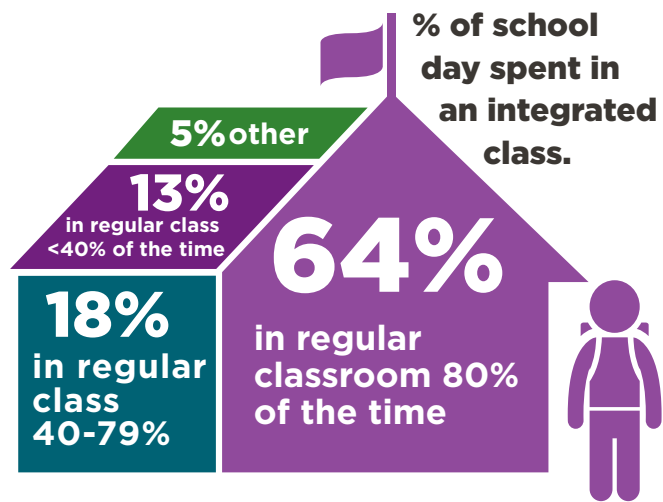


97% of infants and toddlers with disabilities are served at home or in community-based settings.

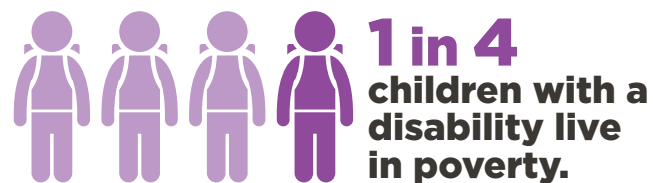
Disabilities by Type



Learning Environment



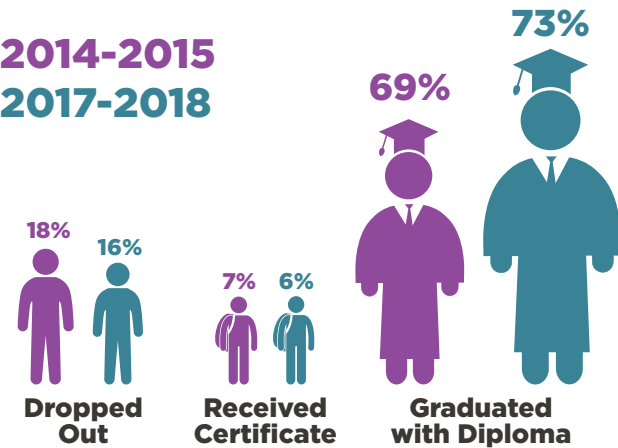
Poverty Rate



TRANSITION AGE YOUTH

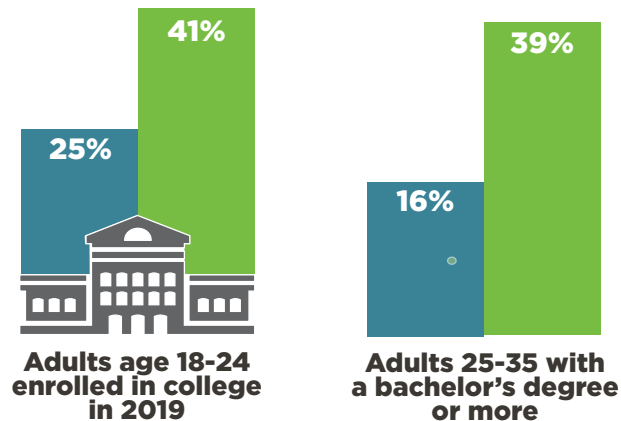
Special Education Students Exiting High School

2014-2015
2017-2018



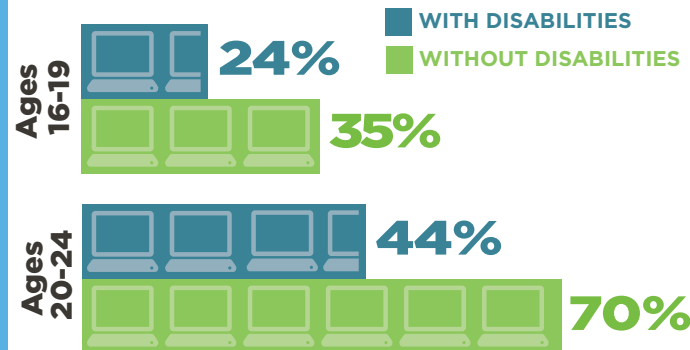
Postsecondary Education—Enrollment or Attained Degree

WITH DISABILITIES AND WITHOUT DISABILITIES



Youth Employment

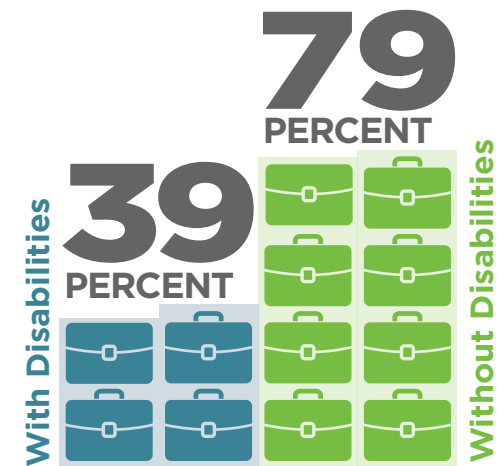
WITH DISABILITIES AND WITHOUT DISABILITIES



WORKING AGE ADULTS

WITH AND WITHOUT DISABILITIES

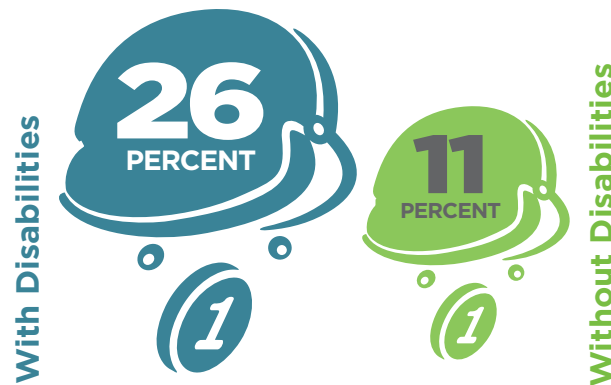
Employment Rate—Ages 18-64



Median Annual Earnings—Ages 16+



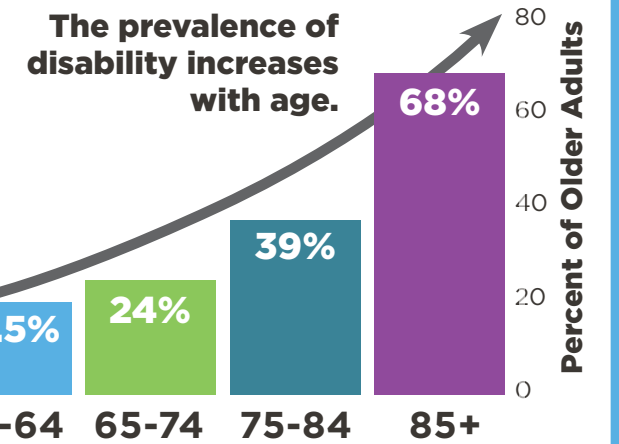
Poverty Rate—Ages 18-64



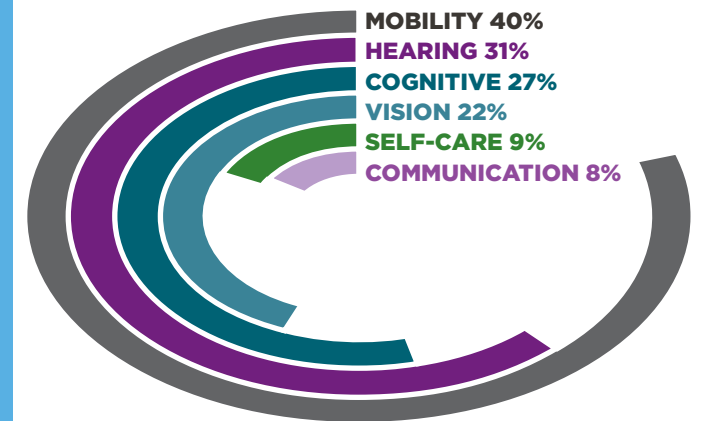
OLDER ADULTS

65 AND UP WITH DISABILITIES

Disability Prevalence by Age



Disabilities by Type



Race and Ethnicity Impact the Prevalence of Disability

| Disability by Race/Ethnicity | 18-64 | 65-74 | 75+ |
|------------------------------|-------|-------|------|
| White | 10.2 | 23.8 | 47.0 |
| Black/African American | 12.8 | 30.0 | 51.1 |
| Native American | 16.3 | 43.5 | 63.1 |
| Asian | 4.2 | 17.1 | 45.4 |
| Hispanic | 8.1 | 27.3 | 52.5 |

